

R 1610 S



Reservedelsliste
Spare parts list
Ersatzteilliste
Liste de pièce de rechange

X2

JF-STOLL

Always state the serial number and if possible the year of the machine when ordering spare parts whereby you save time and money and facilitates matters for us.
Please enter the number of your machine here:

No..... Delivered on the / 20.....

Appropriate when ordering parts.

The serial number is located as shown on the figure.

Bei Ersatzteilbestellungen ist die Fabrikationsnummer Ihrer Maschine unbedingt anzugeben. Das erspart Ihnen Zeit, Geld und Ärger und erleichtert uns die Abfertigung. Tragen Sie die Nummer Ihrer Maschine bitte hier ein:

Nr..... Geliefert am / 20.....

dann haben Sie bei Ersatzteilbestellungen immer die Nummer bei der Hand.

Die Fabrikationsnummer ist im Rahmen eingeschlagen, siehe Figur.

Lorsque vous commandez des pièces détachées, indiquez toujours le numéro de série de votre machine et si possible son année de fabrication. Vous éviterez des pertes de temps et vous nous faciliterez le travail.

Prière de noter ici le numéro de série de votre machine:

Numéro..... Livrée le / 20.....

Ceci vous sera utile lorsque vous commanderez des pièces.

Le numéro de série est gravé dans le cadre comme indiqué sur la figure.

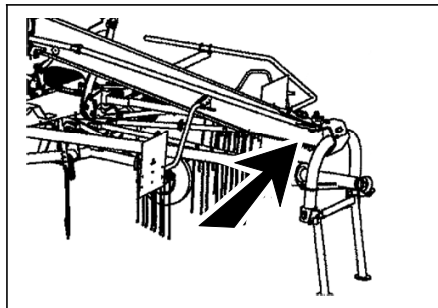
Bestiller De reservedele så opgiv venligst maskinens fabrikationsnummer og eventuelt købsår. Det sparer Dem tid, penge og ærgrelser og os unødigt besvær.

De kan notere nummeret på Deres maskine her:

Nr..... Leveret den / 20.....

så har De det ved hånden, når De eventuelt skal bestille reservedele.

Fabrikationsnummeret findes indhugget i rammen, som vist på figuren.



SPARE PARTS BOOK ERSATZTEILKATALOG CATALOGUE DE PIÈCES RESERVEDELSKATALOG

The book is divided into 5 passages:

1. Description of the spare part book.
2. Number key for assembly parts.
3. Number key showing on which figures the spare part numbers can be found.
4. Figure key showing on which figures the parts can be found.
5. Spare parts list.

Der Katalog ist in 5 Abschnitte eingeteilt:

1. Beschreibung des Ersatzteilkataloges.
2. Nummernschlüssel für Montagezubehör.
3. Nummernschlüssel mit Angabe der jeweiligen Ersatzteilnummer.
4. Figurliste mit Angabe, auf welche Figuren die Teile zu finden sind.
5. Ersatzteilliste.

Le catalogue est divisé en 5 sections:

1. Description du catalogue de pièces.
2. Liste de pièces de montage.
3. Numéros des pièces de rechange indiquant le numéro de figure.
4. Liste des figures indiquant sur quelle figure se trouvent les pièces.
5. Liste de pièces de rechange.

Kataloget er opdelt i 5 afsnit:

1. Beskrivelse af reservedelskataloget.
2. Nummernøgle for monteringsdele.
3. Nummernøgle - viser på hvilke figurer reservedelsnumrene findes.
4. Figurnøgle - viser på hvilke figurer delene findes.
5. Reservedelsliste.

Description of the spare parts book:
Beschreibung des Ersatzteilkataloges:
Description du catalogue de pièces:
Beskrivelse af reservedelskataloget:

The spare parts book is built up as follows:

Fig. 01-29 Standard Fig. 50-59 Hub
 Fig. 30-39 Gear Fig. 60-79 Variation of standard (Accessory)
 Fig. 40-49 PTO drives Fig. 80- Accessory

Der Ersatzkatalog ist so aufgebaut:

Fig. 01-29 Standard Fig. 50-59 Nabe
 Fig. 30-39 Getriebe Fig. 60-79 Variation vom Standard (Zubehör)
 Fig. 40-49 Gelenkwellen Fig. 80- Zubehör

Le catalogue de pièces est arrangé comme suit:

Fig. 01-29 Standard Fig. 50-59 Moyeu
 Fig. 30-39 Boîtier Fig. 60-79 Variation du standard (Accessoire)
 Fig. 40-49 Arbres à cardan Fig. 80- Accessoire

Reservedelskataloget er opbygget således:

Fig. 01-29 Standard Fig. 50-59 Nav
 Fig. 30-39 Gear Fig. 60-79 Variation af standard (Tilbehør)
 Fig. 40-49 Kraftoverføringsakslær Fig. 80- Tilbehør

Position No.:

The position No. marked "()" is not standard.
 Is delivered as accessory.

Positionsnummer:

Die Positionsnummer, die mit "()" gezeichnet ist, ist nicht der Standard.
 Wird als Zubehör geliefert.

No de pos.:

Le numéro de position marqué d'un "()" n'est pas une pièce standard.
 Livrée comme accessoire.

Pos. nr.:

Positionsnummer mærket med "()" er ikke standard.
 Leveres som tilbehør

Article no.:

The article no. marked "T" is not standard. Is delivered as accessories.
 the article no. marked "+":
 Modification is being made.

Warennummer:

Ist eine Warennummer mit "T" gekennzeichnet, wird sie als Zubehör geliefert.
 Eine Warennummer mit "+" ist als Modifikation unterwegs.

No. D'article:

Le no d'article marqué d'un "T" n'est pas un article standard. Livré comme accessoire.
 No. d'article marqué de "+":
 Une modification viendra.

Varenr.:

Warennummer mærket med "T" er ikke standard. Leveres som tilbehør.
 Warennummer mærket med "+":
 ændring undervejs.

| POS. | VARENUMMER | ANTAL | BENÆVNELSE | BEZEICHNUNG | DESIGNATION | HERTEL, DAU TO THIS, A TREC | 1341-9187 | 1 |
|------|-------------|-------|---|-------------|-------------|-----------------------------|-----------|---|
| 33. | 1340-9153 T | 2 | KRYDS KREBTZGARNITUR >=0003219 <=0003448 | CENTRE | | 1341-9187 | 1 | |
| 33.1 | 1350-7005 | 2 | KRYDS KREBTZGARNITUR >=0003219 | CENTRE | | 1350-9052 1350-9104 | 4 1 | |
| 34. | 1340-0196 | 1 | PROFILAKSEL PROFILGABEL >=0003219 <=0003448 | PROFIL FORK | | | | |
| 34.1 | 1350-8008 | 1 | PROFILAKSEL PROFILGABEL >=0003219 | PROFIL FORK | | | | |

Designation:

>=0003219 <=0003448
 Spare part used for machine from serial No. 3219 up to No. 3448 both Nos. included.

Benennung:

>=0003219 <=0003448
 Ersatzteil für Maschinen von Fabrikationsnummer 3219 bis Nr. 3448.

Désignation:

>=0003219 <=0003448
 Pièce de rechange employée sur machines à partir de no de série 3219 jusqu'à et y compris no 3448.

Benævnelse:

>=0003219 <=0003448
 Reservedel anvendt på maskine fra og med fabrikationsnummer 3219 til og med nr. 3448

Quantity:

States quantity of parts for machine. In connection with subassemblies: Quantity for the assembly.

Anzahl:

Anzahl Teile je Maschine. Bei Untersammlungen: Anzahl je Sammlung.

Quantité:

Quantité de pièces par machine. Pour les sous-assemblages: pièces par assemblage.

Antal:

Antal dele pr. maskine. Ved undersamlinger: dele pr. samling.

To this:

States which and how many mounting assemblies (screws, nuts, discs etc.) are used with the spare part. See under number key for assembly parts

Dazu:

Angabe von Montageanteilen (Schrauben, Muttern, Scheiben usw.) die zusammen mit dem Ersatzteil angewendet werden sollen. Siehe Nummerschlüssel für Montagezubehör.

Pour ceci:

Indique lesquelles et combien de pièces de montage (vis, écrous, rondelles etc.) sont employées avec la pièce de rechange. Voir dans la liste de numéros pour pièces de montage.

Hertil:

Angiver hvilke og hvor mange monteringsdele (skrue, møtrikker, skiver osv.) der anvendes sammen med reservedelen. Se under nummernøgler for monteringsdele.

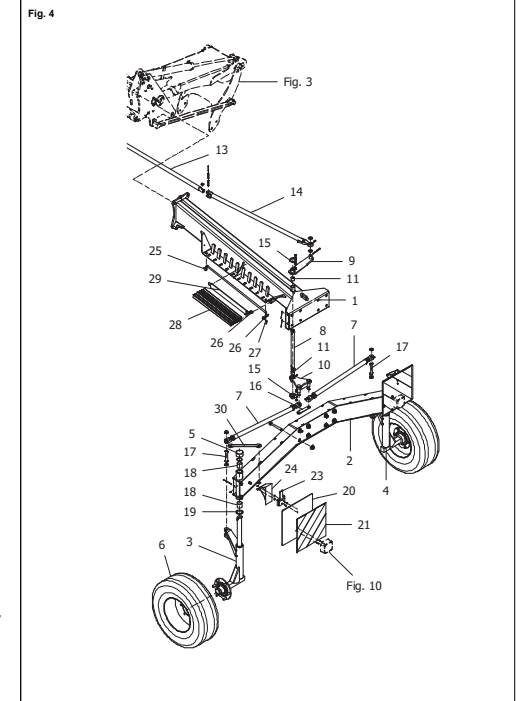
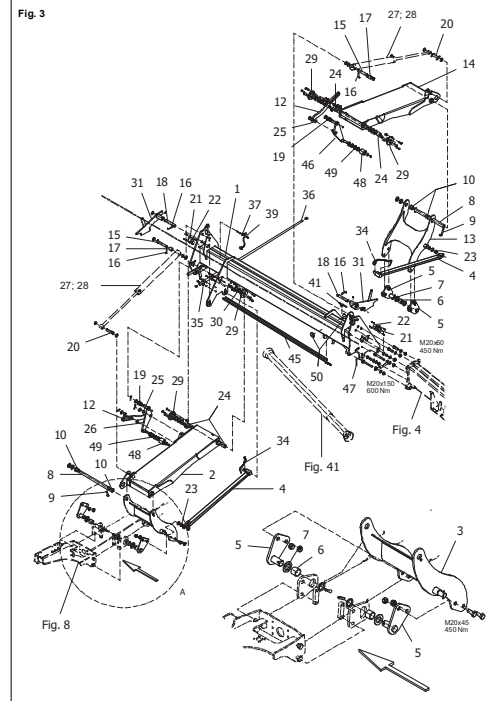
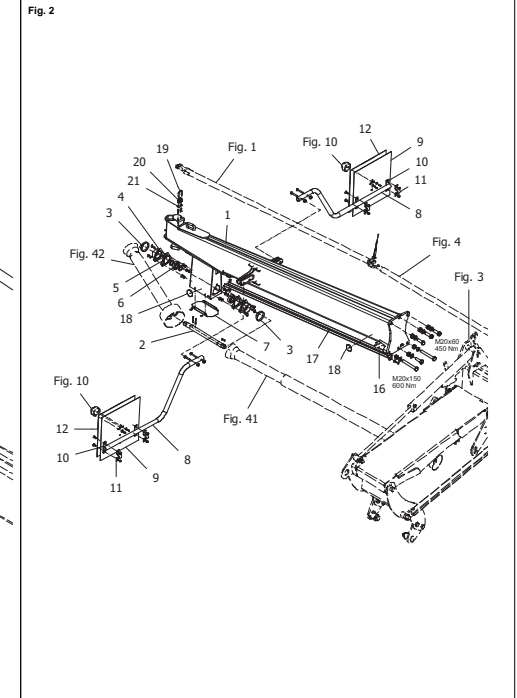
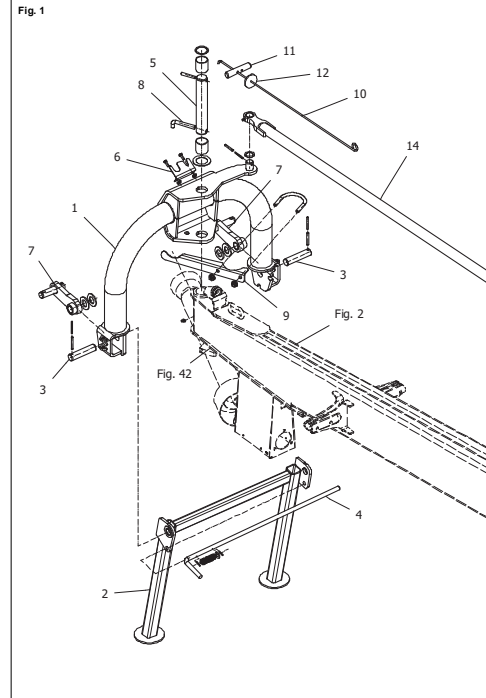
| VARENUMMER | BENÆVNELSE | BEZEICHNUNG | DESIGNATION |
|------------|-------------------------------|---------------------------------|-------------------------------|
| 0015170 | SMØRENIPPEL AM8X1 | SCHMIERNIPPEL AM8X1 | GREASE NIPPLE AM8X1 |
| 0426880 | RADMUTTER A18X1,5 D 74361 | RADMUTTER A18X1,5 D 74361 | WHEEL STUD A 18X1,5 |
| 0445500 | KABELBINDER | KABELBINDER | CABLETIE |
| 0465390 | KUGLELEJE 6305 2RS | RIKGL 6305 2RS | GRV BALL BEAR 6305 2RS |
| 1213-1122 | SETSKRUE M5-16 | ST. SETSCHRAUBE M5-16 | STEEL SET SCREW M5-16 |
| 1213-1222 | STÅLSETS KRUE M6-20 | ST. SETSCHRAUBE M6-20 | STEEL SET SCREW M6-20 |
| 1213-1224 | STÅLSETS KRUE M6-25 | ST. SETSCHRAUBE M6-25 | STEEL SET SCREW M6-25 |
| 1213-2124 | STÅLSETS KRUE M8-12 | ST. SETSCHRAUBE M8-12 | STEEL SET SCREW M8-12 |
| 1213-2222 | STÅLSETS KRUE M8-20 | ST. SETSCHRAUBE M8-20 | STEEL SET SCREW M8-20 |
| 1213-2223 | STÅLSETS KRUE M8-25 | STÅHLSECHSKANTSCHRAUBE M8-25 | STEEL SET SCREW M8-25 |
| 1213-2225 | SETS KRUE M8-22 | ST. SETSCHRAUBE M8-22 | STEEL SET SCREW M8-22 |
| 1213-3126 | STÅLSETS KRUE M10-16 | ST. SETSCHRAUBE M10-16 | STEEL SET SCREW M10-16 |
| 1213-3224 | STÅLSETS KRUE M10-25 | ST. SETSCHRAUBE M10-25 | STEEL SET SCREW M10-25 |
| 1213-3322 | STÅLSETS KRUE M10-30 | ST. SETSCHRAUBE M10-30 | STEEL SET SCREW M10-30 |
| 1213-4224 | STÅLSETS KRUE M12-25 | ST. SETSCHRAUBE M12-25 | STEEL SET SCREW M12-25 |
| 1213-4321 | STÅLSETS KRUE M12-30 | ST. SETSCHRAUBE M12-30 | STEEL SET SCREW M12-30 |
| 1213-4322 | STÅLSETS KRUE M12-30 | ST. SETSCHRAUBE M12-30 | STEEL SET SCREW M12-30 |
| 1213-4324 | STÅLSETS KRUE M12-35 | ST. SETSCHRAUBE M12-35 | STEEL SET SCREW M12-35 |
| 1213-4422 | STÅLSETS KRUE M12-40 | ST. SETSCHRAUBE M12-40 | STEEL SET SCREW M12-40 |
| 1213-5522 | STÅLSETS KRUE M16-50 | ST. SETSCHRAUBE M16-50 | STEEL SET SCREW M16-50 |
| 1213-6424 | STÅLSETS KRUE M20-45 | ST. SETSCHRAUBE M20-45 | STEEL SET SCREW M20-45 |
| 1213-6628 | STÅLSETS KRUE M20-60 KV. 10.9 | ST. SETSCHRAUBE M20-60 Q 10.9 | STEEL SET SCREW M20-60 Q 10.9 |
| 1214-1120 | STÅLSKRUE M6-30 | STÅHLSECHSKANTSCHRAUBE M6-30 | STEEL SCREW M6-30 |
| 1214-1121 | STÅLSKRUE M5-40 | STÅHLSECHSKANTSCHRAUBE M5-40 | STEEL SCREW M5-40 |
| 1214-3122 | STÅLSKRUE M10-45 | STÅHLSECHSKANTSCHRAUBE M10-45 | STEEL SCREW M10-45 |
| 1214-3226 | STÅLSKRUE M10-60 | STÅHLSECHSKANTSCHRAUBE M10-60 | STEEL SCREW M10-60 |
| 1214-3432 | STÅLSKRUE M10-140 | STÅHLSECHSKANTSCHRAUBE M10-140 | STEEL SCREW M10-140 |
| 1214-3528 | STÅLSKRUE M10-70 | STÅHLSECHSKANTSCHRAUBE M10-70 | STEEL SCREW M10-70 |
| 1214-4126 | STÅLSKRUE M12-45 | STÅHLSECHSKANTSCHRAUBE M12-45 | STEEL SCREW M12-45 |
| 1214-4322 | STÅLSKRUE M12-70 KV 8.8 | STÅHLSECHSKANTSCHR. M12-70 Q8.8 | STEEL SCREW M12-70 Q 8.8 |
| 1214-4331 | STÅLSKRUE M14-75 | STÅHLSECHSKANTSCHRAUBE M14-75 | STEEL SCREW M14-75 |
| 1214-4334 | ST. SKR MF14X1,5-90 8.8 G | ST. SCHRAUBE MF14X1,5-90 8.8 G | STELL NUT MF14X1,5-90 8.8 G |
| 1214-6522 | STÅLSKRUE M20-150 | STÅHLSECHSKANTSCHRAUBE M20-150 | STEEL SCREW M20-150 |
| 1215-1123 | BREDESKRUE M6-16 | FLACHRUNDSCHRAUBE M6-16 | CARRIAGE SCREW M6-16 |
| 1215-1222 | BR. SKRUE M6-20 | FLACHRUNDSCHRAUBE M6-20 | CARRIAGE SCREW M6-20 |
| 1215-2224 | BREDESKRUE M8-25 | FLACHRUNDSCHRAUBE M8-25 | CARRIAGE SCREW M8-25 |
| 1215-3226 | BREDESKRUE M10-25 KVAL.8,8 | FLACHRUNDSCHRAUBE M10-25 Q 8,8 | CARRIAGE SCREW M10-25 Q 8,8 |
| 1219-0540 | SKRUE M12-1,5-30 | 10.9 S SCHRAUBE M12-1,5-30 | 10.9 SCREW M12-1,5-30 |
| 1219-0922 | U-BOLT | U-BOLZEN | U-BOLT |
| 1220-1122 | STÅLMØTRIK M5 | STÅHMUTTER M5 | STEEL NUT M5 |
| 1220-1322 | NYLOC MØTRIK M5 | NYLOC MUTTER M5 | NYLOC NUT M5 |
| 1220-1323 | NYLOC MØTRIK M6 | NYLOC MUTTER M6 | NYLOC NUT M6 |
| 1220-1922 | KLEMMØTRIK M6 | KAEFIGMUTTER M6 | NUT M6 |
| 1220-2122 | STÅLMØTRIK M8 | STÅHMUTTER M8 | STEEL NUT M8 |
| 1220-2321 | NYLOC MØTRIK M8 | NYLOC MUTTER M8 | NYLOC NUT M8 |
| 1220-2620 | FLANGEMØTRIK M8 | MUTTER MIT BUND M8 | SLEEVE NUT M8 |
| 1220-3020 | TOPMØTRIK M10 | SECHSKANT HUTMUTTER M10 | HEXAGON CAP NUT M10 |
| 1220-3122 | STÅLMØTRIK M10 | STÅHMUTTER M10 | STEEL NUT M10 |
| 1220-3321 | NYLOC MØTRIK M10 | NYLOC MUTTER M10 | NYLOC NUT M10 |
| 1220-3620 | FLANGEMØTRIK M10 | FLANSCHSCHRAUBEN M10 | FLANGE NUT M10 |
| 1220-4321 | NYLOC MØTRIK M12 | NYLOC MUTTER M12 | NYLOC NUT M12 |
| 1220-4322 | LÅSEMØTRIK METAL M12 | GEGENMUTTER METAL M12 | LOCK NUT METAL M12 |
| 1220-4326 | NYLOC MØTRIK M14-1,5 | NYLOC MUTTER M14-1,5 | NYLOC NUT M14-1,5 |
| 1220-4327 | NYLON MØTRIK M14 | NYLONMUTTER M14 | NYLON NUT M14 |
| 1220-4622 | FLANGEMØTRIK M12 | MUTTER MIT BUND M12 | SLEEVE NUT M12 |
| 1220-5321 | NYLOC MØTRIK M16 | NYLOC MUTTER M16 | NYLOC NUT M16 |
| 1220-6122 | STÅLMØTRIK M20 | STÅHMUTTER M20 | STEEL NUT M20 |
| 1220-6321 | NYLOC MØTRIK M20 | NYLOC MUTTER M20 | NYLOC NUT M20 |
| 1220-6323 | NYLOC MØTRIK M20 KV.10 | NYLOC MUTTER M20 Q10 | NYLOC NUT M20 Q10 |
| 1220-6621 | FLANGEMØTRIK M20 | MUTTER MIT BUND M20 | SLEEVE NUT M20 |
| 1241-1105 | SKIVE 5,5-10-0,8 G | SKHEIBE 5,5-10-0,8 G | WASHER 5,5-10-0,8 G |
| 1241-1202 | SPENDESKIVE 8,4-16-1,6 | SCHEIBE 8,4-16-1,6 | WASHER 8,4-16-1,6 |
| 1241-1206 | SPENDESKIVE 6,4-18-1,6 | SCHEIBE 6,4-18-1,6 | WASHER 6,4-18-1,6 |
| 1241-1207 | SPENDESKIVE 6,4-12-1,6 | SCHEIBE 6,4-12-1,6 | WASHER 6,4-12-1,6 |
| 1241-1208 | SPENDESKIVE 7-12-1,6 | SCHEIBE 7-12-1,6 | WASHER 7-12-1,6 |
| 1241-1405 | SPENDESKIVE R5,5-18-2 | SCHEIBE R5,5-18-2 | WASHER R5,5-18-2 |
| 1241-2401 | SPENDESKIVE 11-20-2,5 | SCHEIBE 11-20-2,5 | WASHER 11-20-2,5 |
| 1241-2402 | SPENDESKIVE 10,5-20-2,0 | SCHEIBE 10,5-20-2,0 | WASHER 10,5-20-2,0 |
| 1241-2403 | SPENDESKIVE 11-20-2 | SCHEIBE 11-20-2 | WASHER 11-20-2 |
| 1241-2406 | SPENDESKIVE 13-19-1 S | UNTERLEGRING 13-19-1 | FLAT WASHER 13-19-1 |
| 1241-2408 | SPENDESKIVE 10,5-30-2,5 | SCHEIBE 10,5-30-2,5 | WASHER 10,5-30-2,5 |
| 1241-3403 | SPENDESKIVE 13-25-2,5 | SCHEIBE 13-25-2,5 | WASHER 13-25-2,5 |
| 1241-3508 | SPENDESKIVE 13-25-3 | SCHEIBE 13-25-3 | WASHER 13-25-3 |
| 1241-3509 | SPENDESKIVE 13-37-3 | SCHEIBE 13-37-3 | WASHER 13-37-3 |
| 1241-4502 | SPENDESKIVE 17-30-3 STÅL | SCHEIBE 17-30-3 STAHL | WASHER 17-30-3 STEEL |
| 1241-4505 | SPENDESKIVE 17-28-3 | SCHEIBE 17-28-3 | WASHER 17-28-3 |
| 1241-4507 | SPENDESKIVE 17,5-30-3 | SCHEIBE 17,5-30-3 | WASHER 17,5-30-3 |
| 1241-4508 | SPENDESKIVE MESSING 17-30-3 | SCHEIBE MESSING 17-30-3 | WASHER BRASS 17-30-3 |
| 1241-5201 | SPENDESKIVE 20,0-28-1 | SCHEIBE 20,0-28-1 | WASHER 20,0-28-1 |
| 1241-5503 | SPENDESKIVE 21,0-42-3,5 | SCHEIBE 21,0-42-3,5 | WASHER 21,0-42-3.5 |
| 1241-5504 | SPENDESKIVE 21-37-3 | SCHEIBE 21-37-3 | WASHER 21-37-3 |
| 1241-6604 | SPENDESKIVE 25-44-4 | SCHEIBE 25-44-4 | WASHER 25-44-4 |

FIGURNØGLE - FIGURSCHLÜSSEL - FIGURE KEY - LISTE DE FIGURES

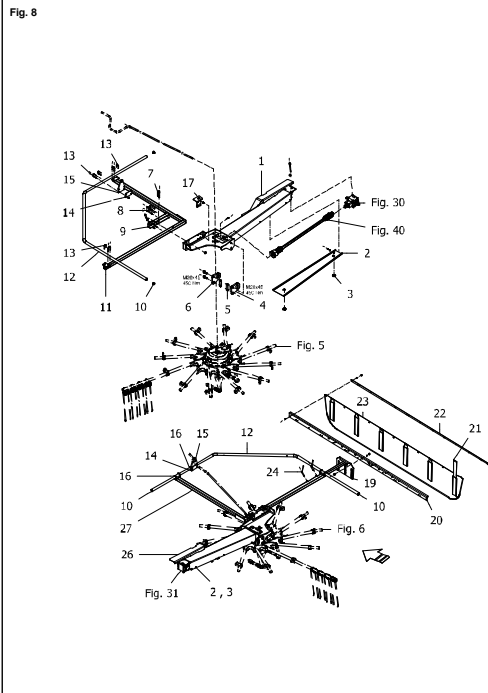
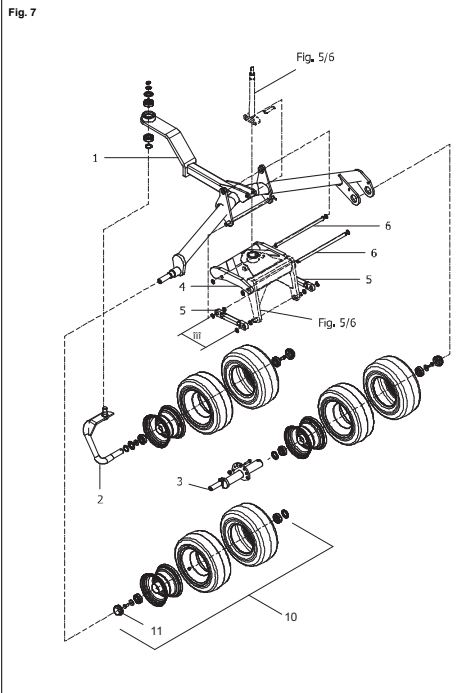
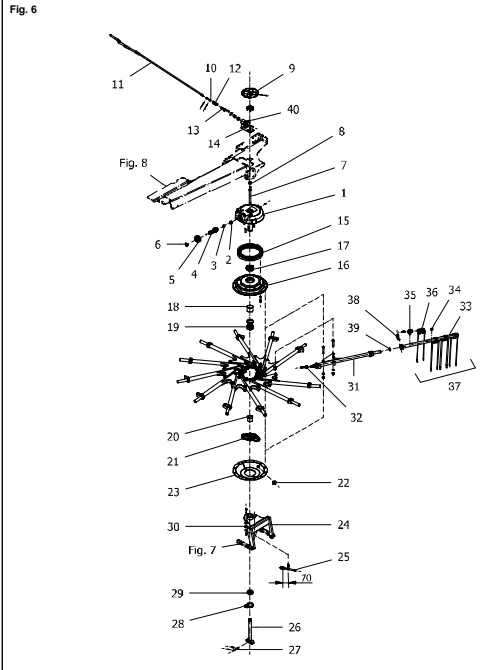
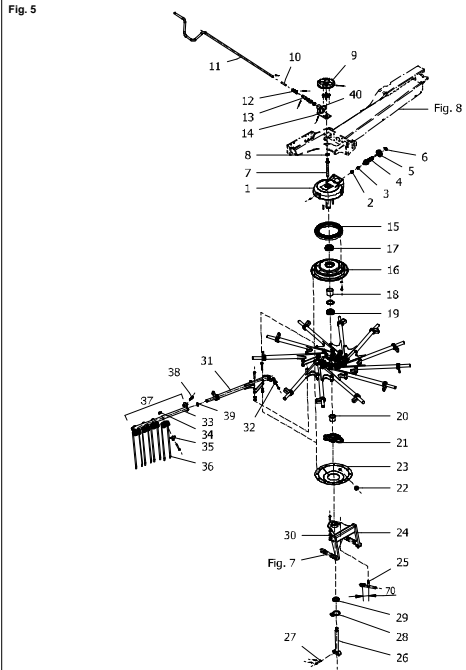
R-0016/1

NUMERNØGLE - NUMMERSCHLUSSEL - NUMBER KEY - LISTE DES NUMEROS

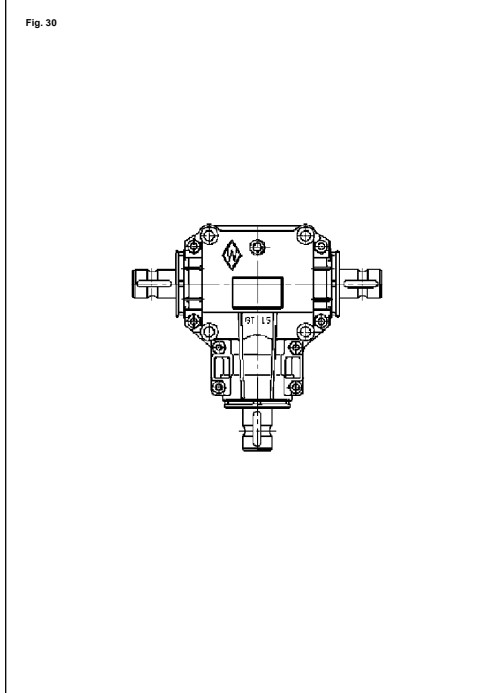
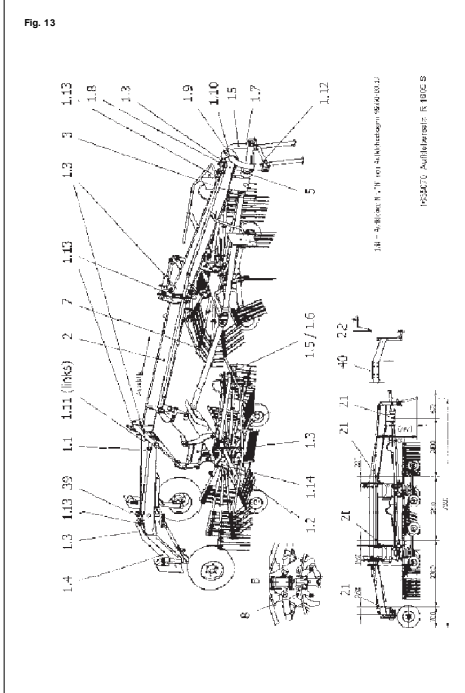
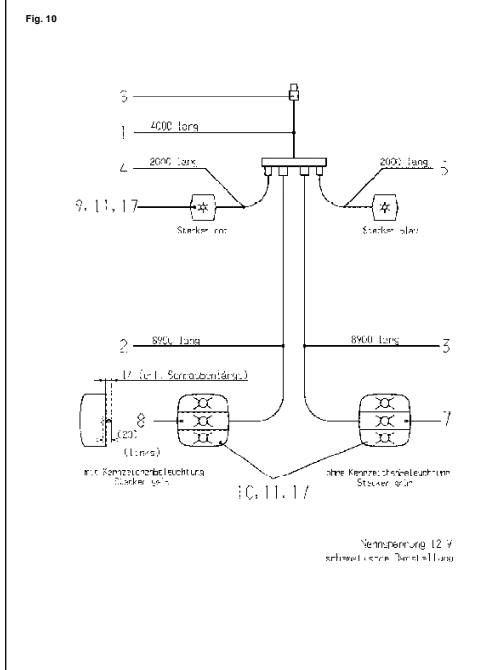
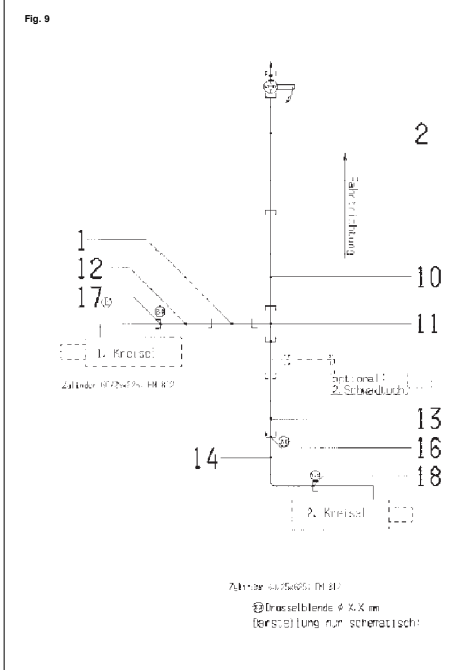
| VARENUMMER | FIGUR | POS. | VARENUMMER | FIGUR | POS. | VARENUMMER | FIGUR | POS. | VARENUMMER | FIGUR | POS. |
|------------|-------|------|------------|-------|------|------------|-------|------|------------|-------|------|
| 3520-166X | 80. | 9. | | | | | | | | | |
| 3520-183X | 5. | 14. | | | | | | | | | |
| 3520-183X | 6. | 14. | | | | | | | | | |
| 3530-056X | 82. | 1. | | | | | | | | | |
| 3570-001X | 1. | 7. | | | | | | | | | |
| 3889-303X | 13. | 1. | | | | | | | | | |
| 4500-0077 | 82. | 20. | | | | | | | | | |
| 4500-0085 | 80. | 50. | | | | | | | | | |
| 4520-0001 | 81. | 10. | | | | | | | | | |



FIGURNØGLE - FIGURSCHLÜSSEL - FIGURE KEY - LISTE DE FIGURES



FIGURNØGLE - FIGURSCHLÜSSEL - FIGURE KEY - LISTE DE FIGURES



FIGURNØGLE - FIGURSCHLÜSSEL - FIGURE KEY - LISTE DE FIGURES

Fig. 31

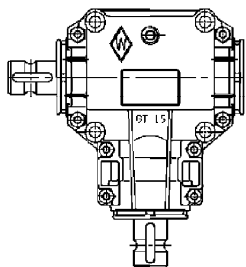


Fig. 40

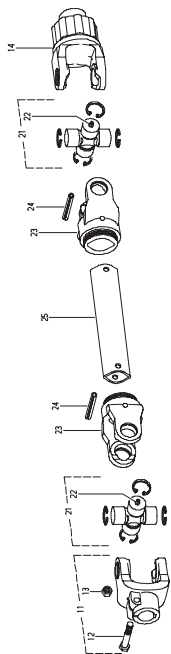


Fig. 41

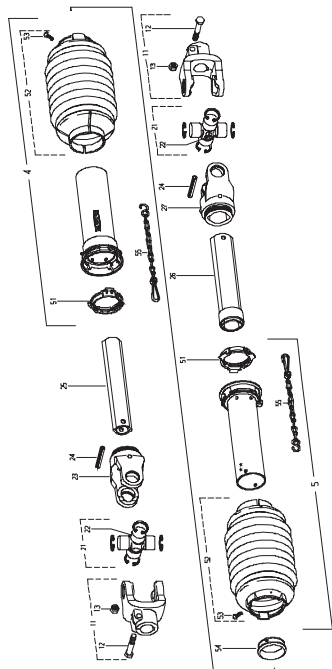
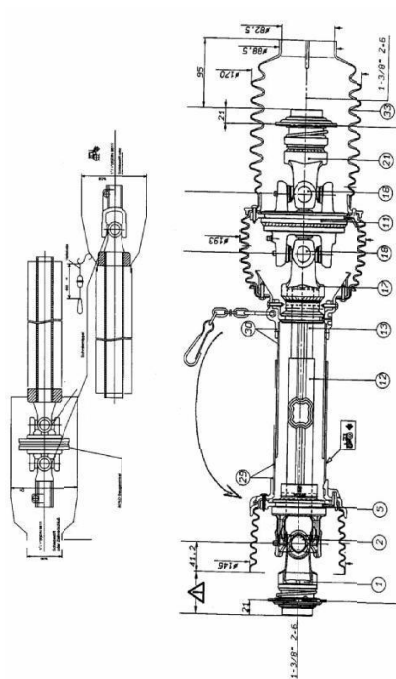


Fig. 42



FIGURNØGLE - FIGURSCHLÜSSEL - FIGURE KEY - LISTE DE FIGURES

Fig. 80

TILBEHØR - ZUBEHÖR - ACCESSORIES

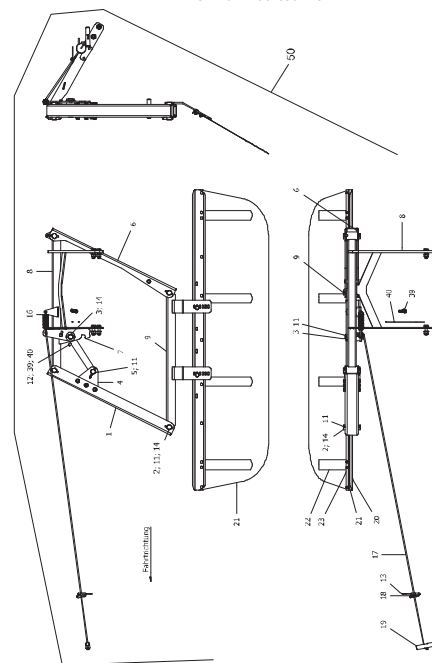


Fig. 81

TILBEHØR - ZUBEHÖR - ACCESSORIES

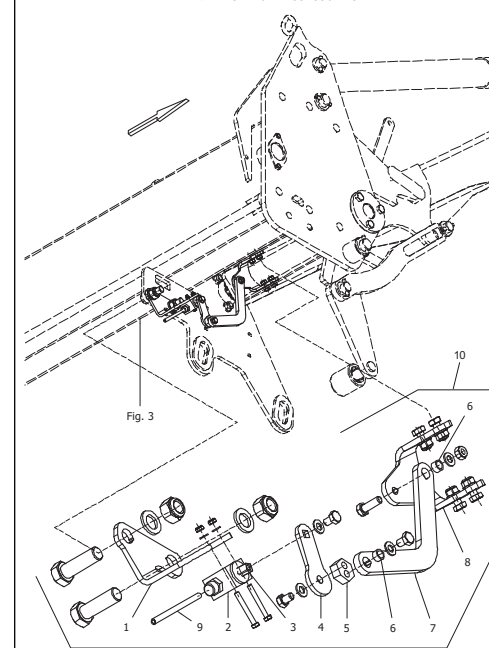


Fig. 82

TILBEHØR - ZUBEHÖR - ACCESSORIES

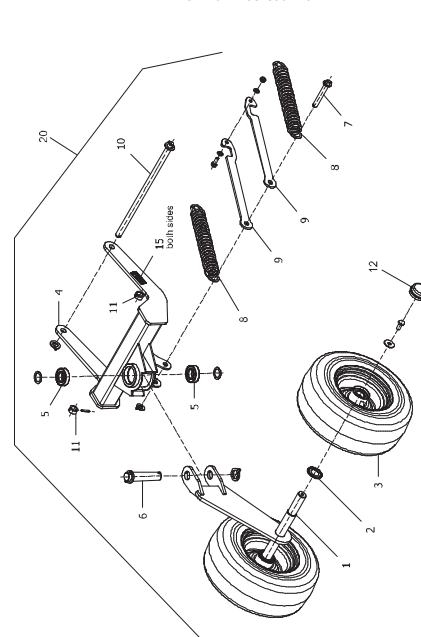
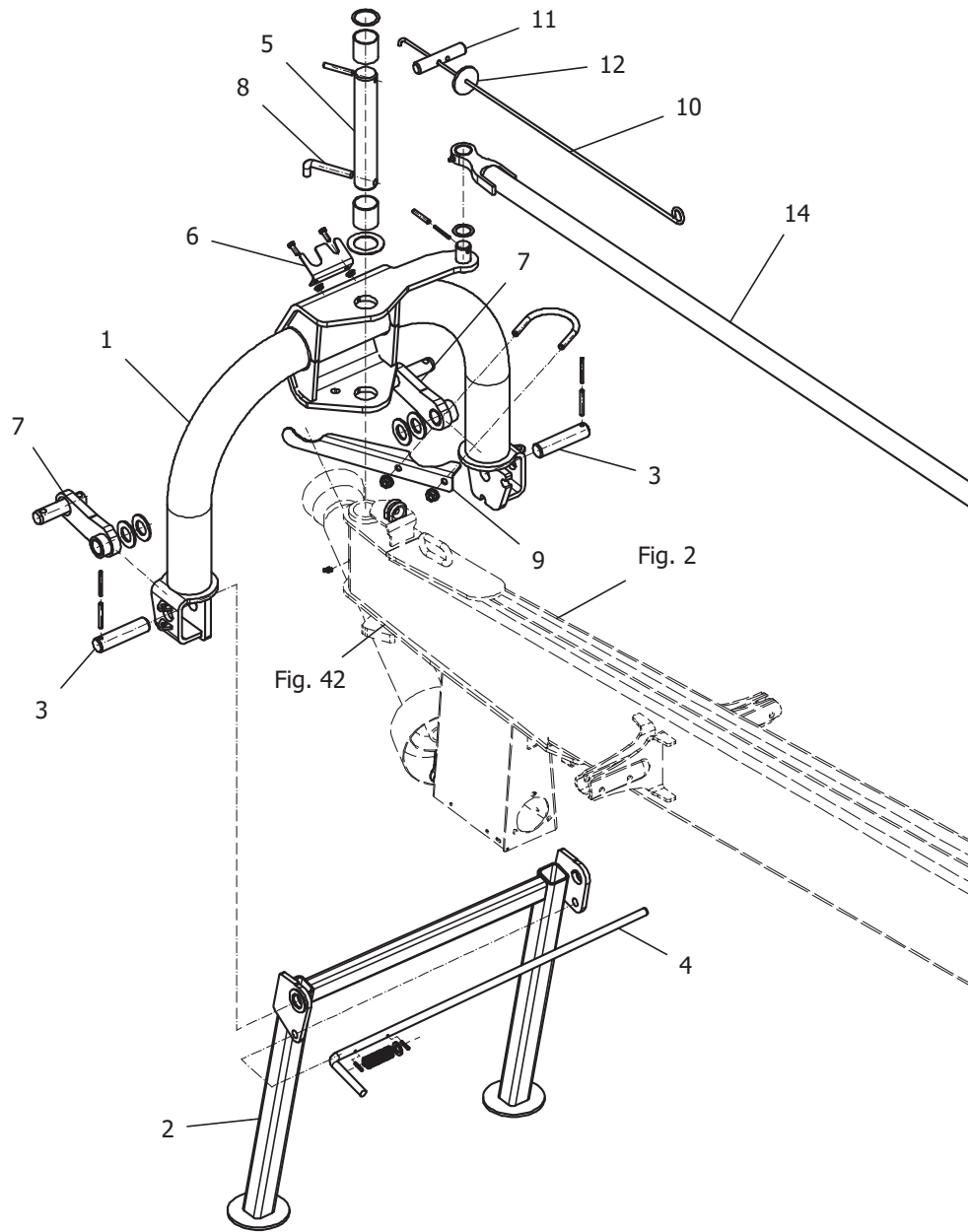


Fig. 1



R-0016/1 R-1610-S

FIG. 1.

>=6850101601

HERTIL, DAZU,
TO THIS, A CECI

| POS. | VARENUMMER | ANTAL | BENÆVNELSE | BEZEICHNUNG | DESIGNATION | | |
|------|------------|-------|--|-------------|-------------------|--|------------------|
| 1. | 1633720 | 1 | OPHENG ANBAUBOCK | | SUSPENSION | | |
| 2. | 1634270 | 1 | STØTTEBEN ABSTELLSTUETZE | | JACK | | |
| 3. | 1634590 | 2 | BOLT 30X125 BOLZEN 30X125 | | BOLT 30X125 | 1251-3503 1251-5505 | 1 1 |
| 4. | 1638270 | 1 | LÅSESTANG VERRIEGELUNGSSTANGE | | LOCKING ROD | 1241-4505 1251-3105 1427280 | 1 2 1 |
| 5. | 1633020 | 1 | TAP 45X277 BOLZEN 45X277 | | BOLT 45X277 | 1241-9924 1251-6505 1614160 1624270 | 1 1 2 1 |
| 6. | 1638200 | 1 | HOLDER STECKERHALTER | | SUPPORT | 1213-2225 1220-2620 | 2 2 |
| 7. | 3570-001X | 2 | TRÆKKONSOL ANLENKZAPFEN KPL. | | PULL BRACKET | 1241-7602 | 2 |
| 8. | 1640870 | 1 | TAP WINKELSTIFT | | DOWEL | | |
| 9. | 1635040 | 1 | KARDANAKSEL-HOLDER GELENKWELLENHALTER | | PTO-SHAFT-SUPPORT | 1219-0922 1220-4622 | 1 2 |
| 10. | 0668440 | 1 | TOV D=6/L=4500 SEIL D=6/L=4500 | | CABLE D=6/L=4500 | | |
| 11. | 0195140 | 1 | HÅNDTAG GRIF | | LEVER | | |
| 12. | 0651640 | 1 | SKIVE SCHEIBE | | WASHER | | |
| 14. | 1633520 | 1 | STYRETAP FORREST LENKSTANGE VO | | HANDLEBAR FRONT | 1241-7907 1251-3403 1251-5405 | 1 1 1 |

Fig. 2

R-0016/1 R-1610-S

FIG. 2.

>=6850101601

HERTIL, DAZU,
TO THIS, A CECI

| POS. | VARENUMMER | ANTAL | BENÆVNELSE | BEZEICHNUNG | DESIGNATION | | |
|------|------------|-------|---|-------------|----------------------------|-----------|---|
| 1. | 1640880 | 1 | RAMME FORREST RAHMEN VO | | FRAME FRONT | 0015170 | 1 |
| | | | | | | 1213-6628 | 4 |
| | | | | | | 1220-6323 | 4 |
| | | | | | | 1241-5503 | 6 |
| 2. | 1633110 | 1 | MELLEMAKSEL ZWISCHENWELLE | | DRIVE SHAFT | 1241-8913 | 2 |
| | | | | | | 1251-3403 | 2 |
| | | | | | | 1251-5405 | 2 |
| | | | | | | 1338-0146 | 1 |
| 3. | 0407190 | 2 | SLANGEHOLDER SCHLAUCHSCHELLE | | HOSE CLAMP | | |
| 4. | 3520-003X | 2 | LEJEDEKSEL LAGERSCHALE | | HALF OF BEARING HOUSING | 1213-3224 | 3 |
| | | | | | | 1220-3122 | 3 |
| | | | | | | 1241-2402 | 3 |
| 5. | 1429230 | 2 | LEJEHUS LAGERHAUSE 3-LOCH | | BEARING HOUSING | | |
| 6. | 1422560 | 2 | KUGLELEJE RILLENKUGELLAGER | | BALL BEARING | | |
| 7. | 1633200 | 1 | DÆKSEL LEJEHUS DECKEL LAGERKASTEN | | COVER BEARING HOUSING | 1403420 | 4 |
| 8. | 1627290 | 2 | ADVARSELSTAVLEKONSOL FORREST WARNTAFELHALTER VO. | | WARNING SIGN HOLDER AHEAD | 1214-3226 | 2 |
| | | | | | | 1220-3620 | 2 |
| 9. | 2520-183X | 2 | ADVARSELSSKILT WARNTAFEL ROSTFREI | | WARNING SIGN | | |
| 10. | 0661380 | 4 | MELLEMLÆGSPLADE ZWISCHENPLATTE | | INTERMEDIATE PLATE | | |
| 11. | 1311-8648 | 4 | RØRHOLDER ROHRSCHELLE | | SUPPORT FOR TUBE | 1215-2224 | 2 |
| | | | | | | 1220-2620 | 2 |
| 12. | PR80-6604 | 2 | SELVKLÆBENDE ADVARSELSFOLIE SELBSTKLEBENDE WARNFOLIE | | SELF-ADHESIVE WARNING FOIL | | |
| 16. | 1641040 | 1 | KABELKANALHOLDER KABELKANALHALTER | | CABLE CHANNEL CLIP | 1214-6522 | 2 |
| | | | | | | 1220-6323 | 2 |
| | | | | | | 1241-5503 | 2 |
| 17. | 1641010 | 1 | KABELKANAL FORREST KABELKANAL VORN | | CABLE CHANNEL AHEAD | 1213-2222 | 1 |
| | | | | | | 1215-1123 | 1 |
| | | | | | | 1220-1323 | 1 |
| | | | | | | 1220-2620 | 1 |
| | | | | | | 1241-1208 | 1 |
| 18. | 0482690 | 4 | REFLEKS RUECKSTRAHLER RD 60 | | REAR REFLECTOR | | |
| 19. | 2365-367X | 1 | BØJLESKRUE SCHRAUBE | | SCREW | 1220-1323 | 2 |
| | | | | | | 1241-1207 | 2 |
| 20. | 2365-366X | 1 | PORCELÆNSØJE PORZELAN OESE | | PORCELAIN EYE | | |
| 21. | 2365-404X | 1 | UNDERLAG ZWISCHENLAGE | | INTERMEDIATE PLATE | | |

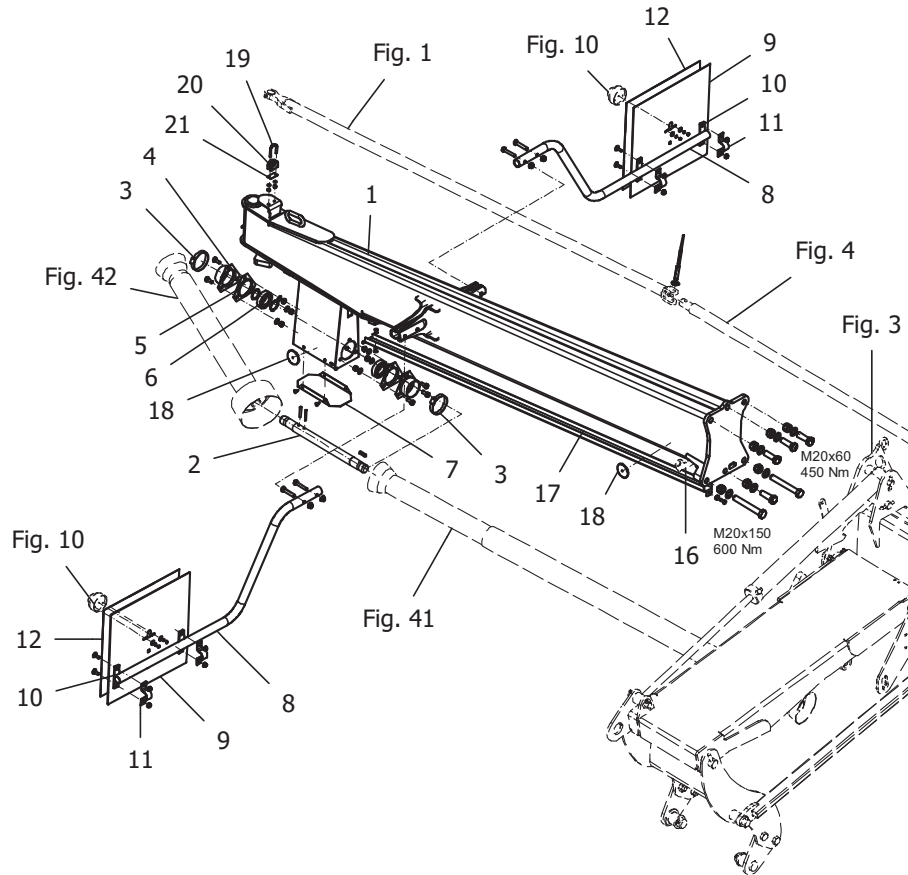
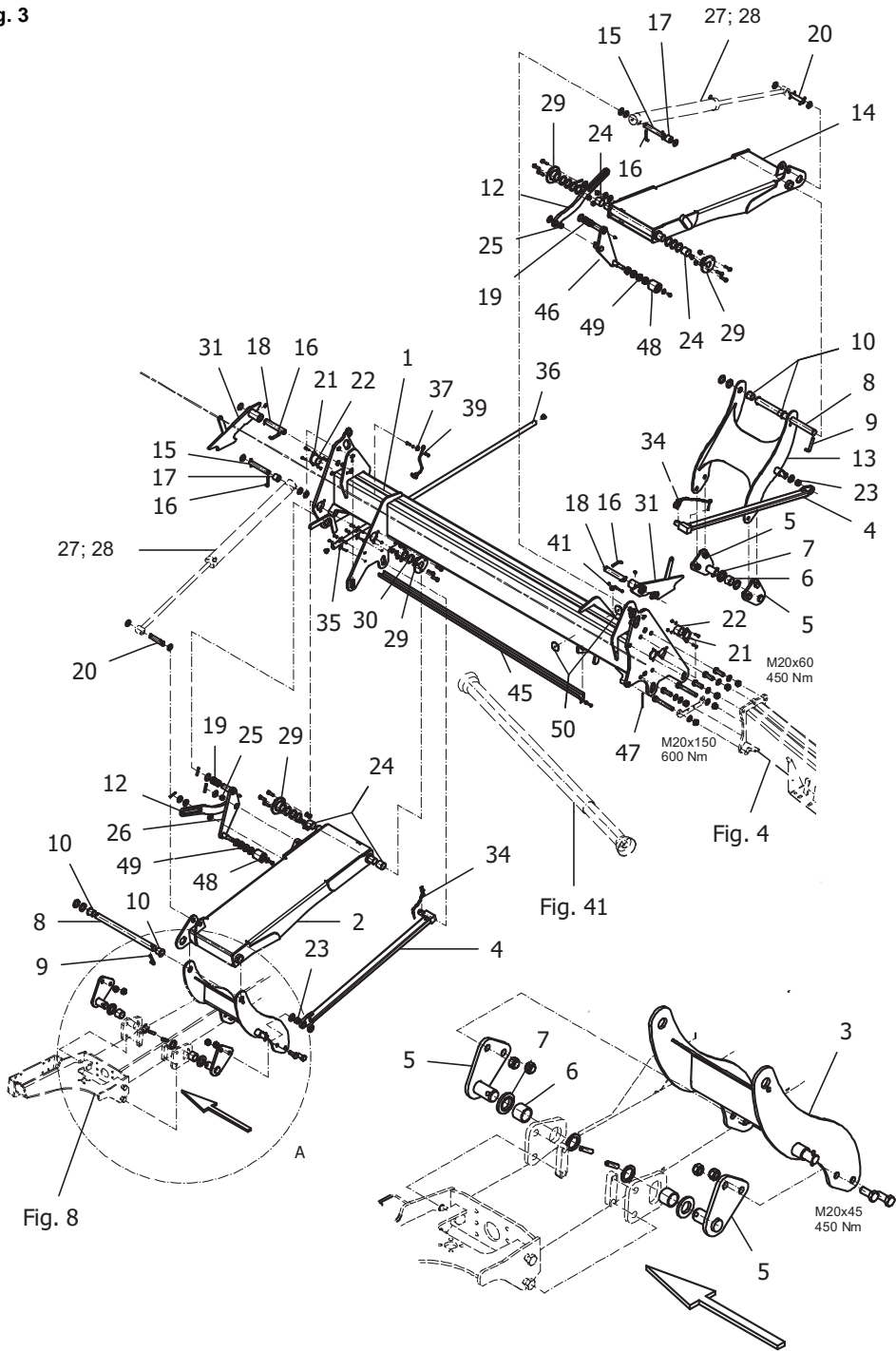


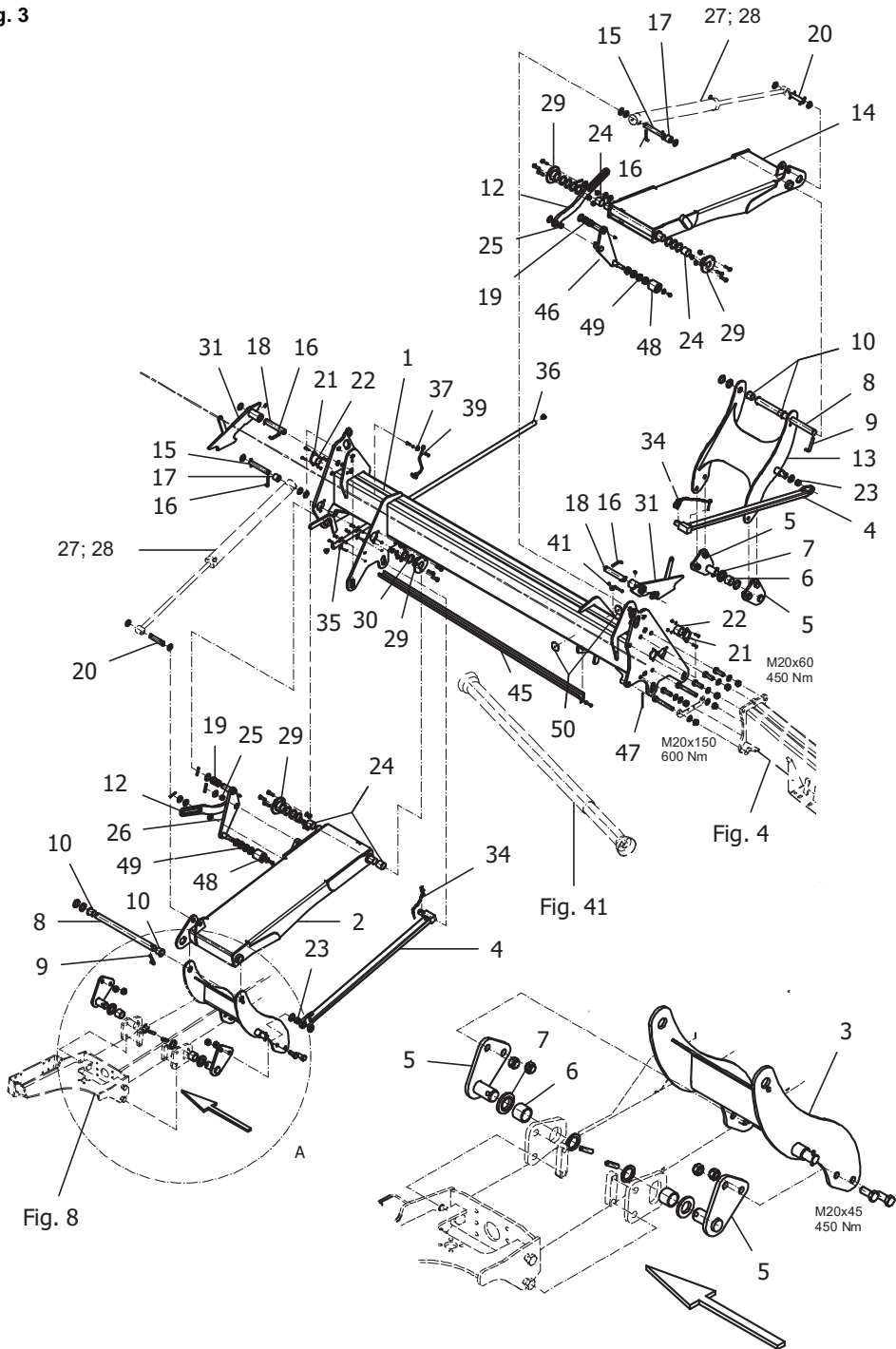
Fig. 3



R-0016/1 R-1610-S FIG. 3. >=6850101601

| POS. | VARENUMMER | ANTAL | BENÆVNELSE | BEZEICHNUNG | DESIGNATION | HERTIL, DAZU, TO THIS, A CECI | |
|------|------------|-------|--|----------------------------|-------------|-------------------------------|---|
| 1. | 1633950 | 1 | RAMME MIDT RAHMEN MI | FRAME MIDDLE | | 1213-6628 | 4 |
| | | | | | | 1214-6522 | 2 |
| | | | | | | 1220-6323 | 6 |
| | | | | | | 1241-5503 | 8 |
| 2. | 1634450 | 1 | ARM V. ARM LI | ARM LEFT | | | |
| 3. | 1633820 | 1 | VIPPEARM VENSTRE SCHWINGE LI | ROCKER LEFT | | | |
| 4. | 1634210 | 2 | JUSTERESTANG VERSTELLSTREBE KPL | ADJUSTING STRUT | | 1241-7701 | 4 |
| | | | | | | 1251-5405 | 2 |
| 5. | 1633900 | 4 | FØRINGSBOLT FUEHRUNGSBOLZEN | GUIDE BOLT | | 1213-6424 | 2 |
| | | | | | | 1220-6321 | 2 |
| | | | | | | 1241-7801 | 2 |
| | | | | | | 1251-5505 | 2 |
| | | | | | | 1251-7505 | 2 |
| 6. | 1641070 | 4 | RULLE BRONZE ROLLE (BRONZE) | ROLLER BRONZE | | | |
| 7. | 1641080 | 4 | INDGANGSSKIVE ANLAUFSKIBE | SARTING DISK | | | |
| 8. | 1634830 | 2 | AKSEL 35X505 WELLE 35X505 | SHAFT 35X505 | | 1241-7802 | 2 |
| | | | | | | 1251-5405 | 1 |
| 9. | 1614740 | 2 | TAP WINKELSTIFT | DOWEL | | | |
| 10. | 1427370 | 4 | GLIDELEJE BØSNING GLEITLAGERBUCHSE | PLAIN BEARING BUSH | | | |
| 12. | 1634850 | 2 | KOBLING KOPPEL | LINKAGE | | 1241-6606 | 4 |
| | | | | | | 1251-5306 | 1 |
| | | | | | | 1251-5405 | 1 |
| 13. | 1633890 | 1 | VIPPEARM HØJRE SCHWINGE RE | ROCKER RIGHT | | | |
| 14. | 1634800 | 1 | ARM H. ARM RE | ARM RIGHT | | | |
| 15. | 1634730 | 2 | BOLT 25X170 BOLZEN 25X170 | BOLT 25X170 | | 1241-6606 | 3 |
| | | | | | | 1251-5306 | 1 |
| 16. | 1622830 | 4 | TAP 10X14X60 WINKELSTIFT 10X14X60 | DOWEL 10X14X60 | | | |
| 17. | 1634740 | 2 | AFSTANDSRING DISTANZBUCHSE | SPACER | | | |
| 18. | 1634840 | 2 | BOLT 30X170 BOLZEN 30X170 | BOLT 30X170 | | 1241-7908 | 1 |
| | | | | | | 1251-5405 | 1 |
| 19. | 0474050 | 4 | BØSNING GEROLLTE LD-BUCHSE 30-34-30 | BUSH | | | |
| 20. | 1634750 | 2 | BOLT 25X110 BOLZEN 25X110 | BOLT 25X110 | | 1241-6606 | 2 |
| | | | | | | 1251-5306 | 2 |
| 21. | 1615410 | 2 | LÅSEBLIK SICHERUNGSBLECH | SAFETY PLATE | | 1214-1120 | 2 |
| | | | | | | 1220-1323 | 2 |
| | | | | | | 1241-1207 | 2 |
| 22. | 1421670 | 2 | GLIDELEJEBØSNING GLEITLAGERBUCHSE | PLAIN BEARING BUSH | | | |
| 23. | 1421650 | 2 | GLIDELEJEBØSNING GLEITLAGERBUCHSE | PLAIN BEARING BUSH | | | |
| 24. | 1425810 | 4 | GLIDELEJEBØSNING GLEITLAGERBUCHSE | PLAIN BEARING BUSH | | | |
| 25. | 1418780 | 2 | GLIDELEJEBØSNING 2528-15 GLEITLAGERBUCHSE 2528-15 | PLAIN BEARING BUSH 2528-15 | | | |

Fig. 3



R-0016/1 R-1610-S

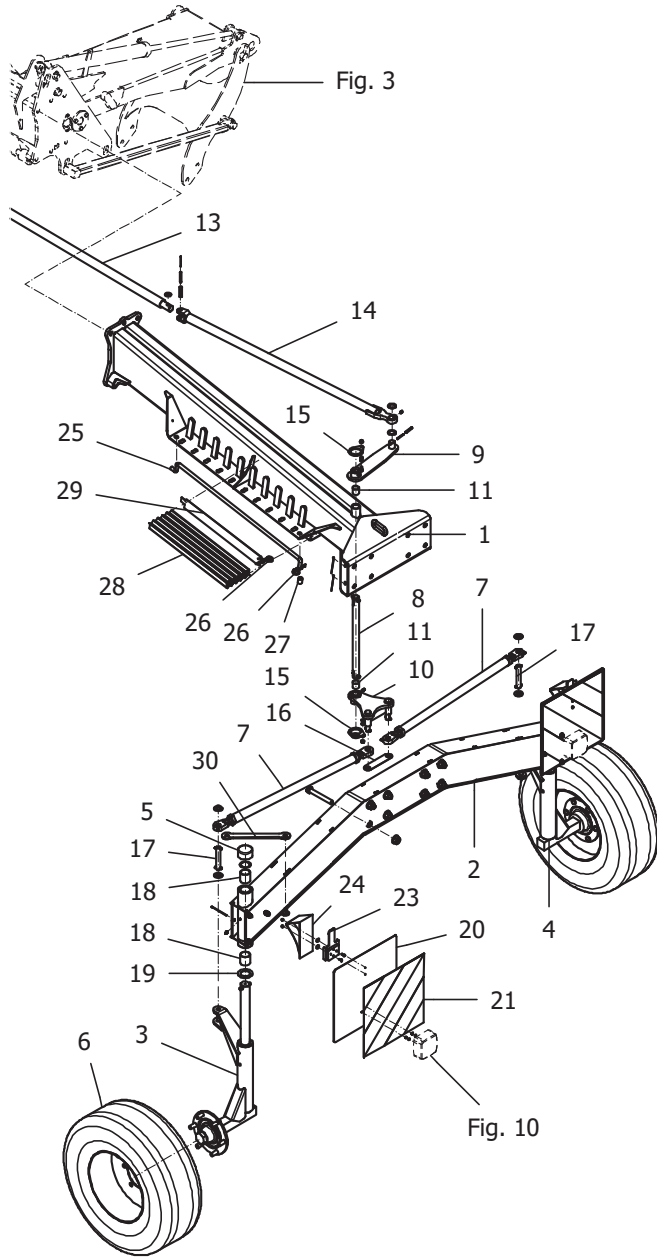
FIG. 3.

>=6850101601

HERTIL, DAZU,
TO THIS, A CECI

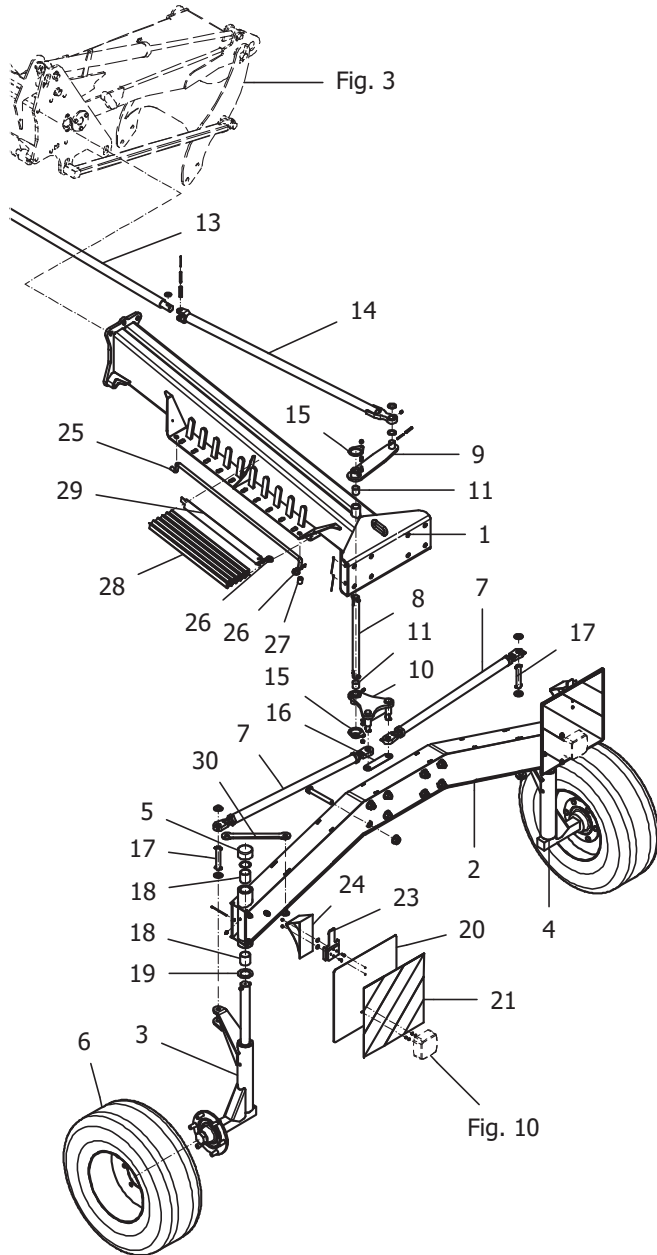
| POS. | VARENUMMER | ANTAL | BENÆVNELSE | BEZEICHNUNG | DESIGNATION | | |
|------|------------|-------|--|---------------------------|-------------|---|-----------------------|
| 26. | 1634671 | 1 | RULLEARM V. ROLLENHEBEL LI | ROLLER LEVER LEFT | | 1213-3126 1241-2408 1241-7701 1251-5405 1313-1103 | 1 1 2 1 1 |
| 27. | 1317-0947 | 2 | HYDR. CYLINDER 60/25-625 HYDR. ZYLINDER 60/25-625 | HYDR. CYLINDER 60/25-625 | | | |
| 28. | 1317-9506 | 2 | PAKNINGSSÆT DICHTUNGSSATZ | SET OF GASKETS | | | |
| 29. | 1615640 | 4 | NAV NABE | HUB | | 1213-4422 1220-4321 1241-3403 | 3 3 3 |
| 30. | 1629230 | 10 | SKIVE ANLAUFSCHLEIBE | WASHER | | | |
| 31. | 1634430 | 2 | LÅS FALLE | CATCH | | 1241-7908 1251-5405 1313-1103 | 1 1 1 |
| 34. | 1634620 | 2 | HANSTIK SAMLET STECKER KPL | QUICK RELEASE COM. | | | |
| 35. | 1311-8649 | 2 | RØRHOLDER ROHRSCHELLE | SUPPORT FOR TUBE | | | |
| 36. | 1633310 | 1 | BESKYTTELSSESSTANG SCHUTZSTANGE | GUARD | | 1213-1224 1220-1323 1241-1208 1407620 | 4 4 4 2 |
| 37. | 1311-8644 | 1 | RØRHOLDER ROHRSCHELLE | SUPPORT FOR TUBE | | 1213-1224 1220-1323 1241-1208 | 1 1 2 |
| 39. | 1635010 | 1 | RØRLEDNING MONT ROHRLEITUNG MONT | PIPELINE MOUNTED | | | |
| 41. | 1311-8645 | 1 | RØRHOLDER ROHRSCHELLE | SUPPORT FOR TUBE | | 1213-1224 1220-1323 1241-1208 | 1 1 1 |
| 45. | 1641020 | 1 | KABELKANAL MIDTE KABELKANAL MITTE | CABLE CHANNEL MIDDLE | | 1213-2222 1220-2620 | 1 1 |
| 46. | 1634701 | 1 | RULLEARM H. SV. ROLLENHEBEL RE GSW | ROLLER LEVER RIGHT WELDED | | 1213-3126 1241-2408 1241-7701 1251-5405 1313-1103 | 1 1 1 1 1 |
| 47. | 0445500 | 2 | KABELBINDER KABELBINDER | CABLETIE | | | |
| 48. | 1640971 | 2 | RULLE ROLLE | ROLLER | | | |
| 49. | 0429610 | 8 | KUGLELEJE RIKGL 6004 | BALL BEARING | | | |
| 50. | 0482690 | 2 | REFLEKS RUECKSTRAHLER RD 60 | REAR REFLECTOR | | | |

Fig. 4



| POS. | VARENUMMER | ANTAL | BENÆVNELSE | BEZEICHNUNG | DESIGNATION | HERTIL, DAZU, TO THIS, A CECI |
|------|------------|-------|---|-------------|-------------------------------|---|
| 1. | 1634200 | 1 | RAMME BAG RAHMEN HI | | FRAME REAR | 0445500 4 |
| 2. | 3520-133X | 1 | HJULAKSEL RADACHSE | | WHEELAXLE | 0445500 2 1214-3528 6 1214-6522 8 1220-6621 8 |
| 3. | 1613711 | 1 | HJULBØJLE V RADBUEGEL LI | | WHEEL HOOP LEFT | 1241-9924 1 1251-5603 1 1251-7603 1 1313-1103 1 |
| 4. | 1614341 | 1 | HJULBØJLE H RADBUEGEL RE | | WHEEL HOOP RIGHT | 1241-9924 1 1251-5603 1 1251-7603 1 1313-1103 1 |
| 5. | 1644110 | 2 | RØRBESKYTTELSE ROHRSCHUTZKAPPE | | PIPE PROTECTION CAP | |
| 6. | 1615690 | 2 | HJUL SAMLET RAD KPL. | | WHEEL COM | 0426880 6 |
| 7. | 1633620 | 2 | SPORSTANG SAMLET SPURSTANGE KPL | | TRACK ROD COM | |
| 8. | 1614590 | 1 | STYREAKSEL LENKHEBELWELLE | | STEERING ARM SHAFT | 1251-3403 2 1251-5405 2 1251-7405 2 1338-0115 2 |
| 9. | 1614530 | 1 | STYREARM LENKHEBEL | | STEERING LEVER | 1241-7907 2 1251-3403 1 1251-5405 1 |
| 10. | 1633610 | 1 | STYREARM NEDRE LENKHEBEL UT | | STEERING ARM BACK | 1251-3403 2 1251-5405 2 1313-1103 1 |
| 11. | 1421580 | 2 | GLIDELEJEBØSNING GLEITLAGERBUCHSE | | PLAIN BEARING BUSH | |
| 13. | 1633540 | 1 | STYRETAP M. LENKSTANGE MI | | HANDLEBAR MIDDLE | 1241-4508 2 1251-3503 2 1251-5505 2 1251-7505 2 |
| 14. | 1633800 | 1 | STYRETAP BAG SAMLET LENKSTANGE HI KPL | | HANDLEBAR REAR COM. | |
| 15. | 1625650 | 2 | SIKRING SICHERUNG | | SAFETY DEVICE | 1220-2321 1 1241-1202 2 |
| 16. | 1641060 | 1 | STØTTESTANG STUETZBLECH LENKUNG | | SUPPORT PLATE STEERING | |
| 17. | 1614260 | 2 | BOLT 20X134 BOLZEN 20X134 | | BOLT 20X134 | 1241-5504 1 1251-3203 1 1251-5205 1 |
| 18. | 1421570 | 4 | GLIDELEJEBØSNING GLEITLAGERBUCHSE | | PLAIN BEARING BUSH | |
| 19. | 1624270 | 2 | GLIDELEJE - INDGANGSSKIVE GLEITLAGER-ANLAUFSCHEIBE | | SLIDE BEARING - STARTING WASH | |
| 20. | 2520-183X | 2 | ADVARSELSSKILT WARNTAFEL ROSTFREI | | WARNING SIGN | 1214-3528 3 1220-1122 2 1220-3020 3 1241-2403 3 1242-9021 2 |
| 21. | PR80-6604 | 2 | SELVKLEBENDE ADVARSELSFOLIE SELBSTKLEBENDE WARNFOLIE | | SELF-ADHESIVE WARNING FOIL | |
| 23. | 0495210 | 2 | HOLDER PLASTIK HALTER KUNSTSTOFF | | SUPPORT PLASTICS | 1213-1122 2 1220-1322 2 1241-1405 2 |
| 24. | 0495200 | 2 | STOPKLODS PLASTIK UNTERLEGKEIL KUNSTSTOFF | | STOP-BLOCK PLASTIC | |

Fig. 4



R-0016/1 R-1610-S

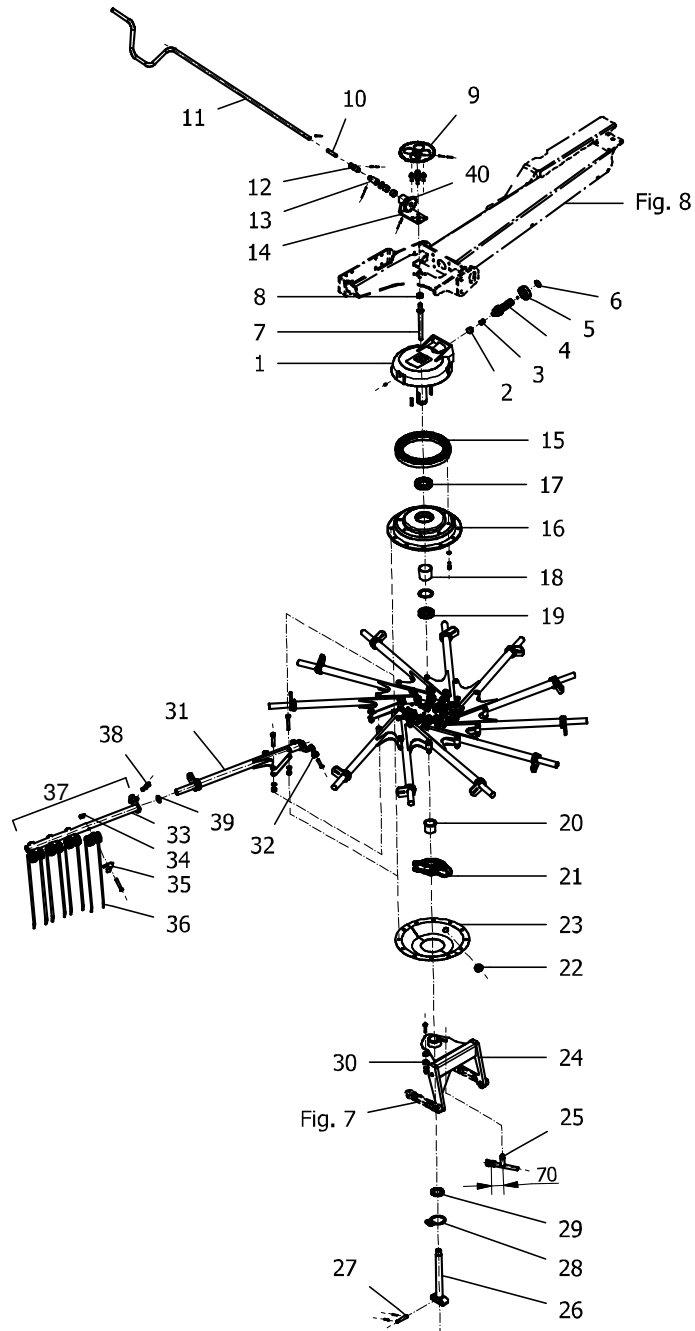
FIG. 4.

>=6850101601

HERTIL, DAZU,
TO THIS, A CECI

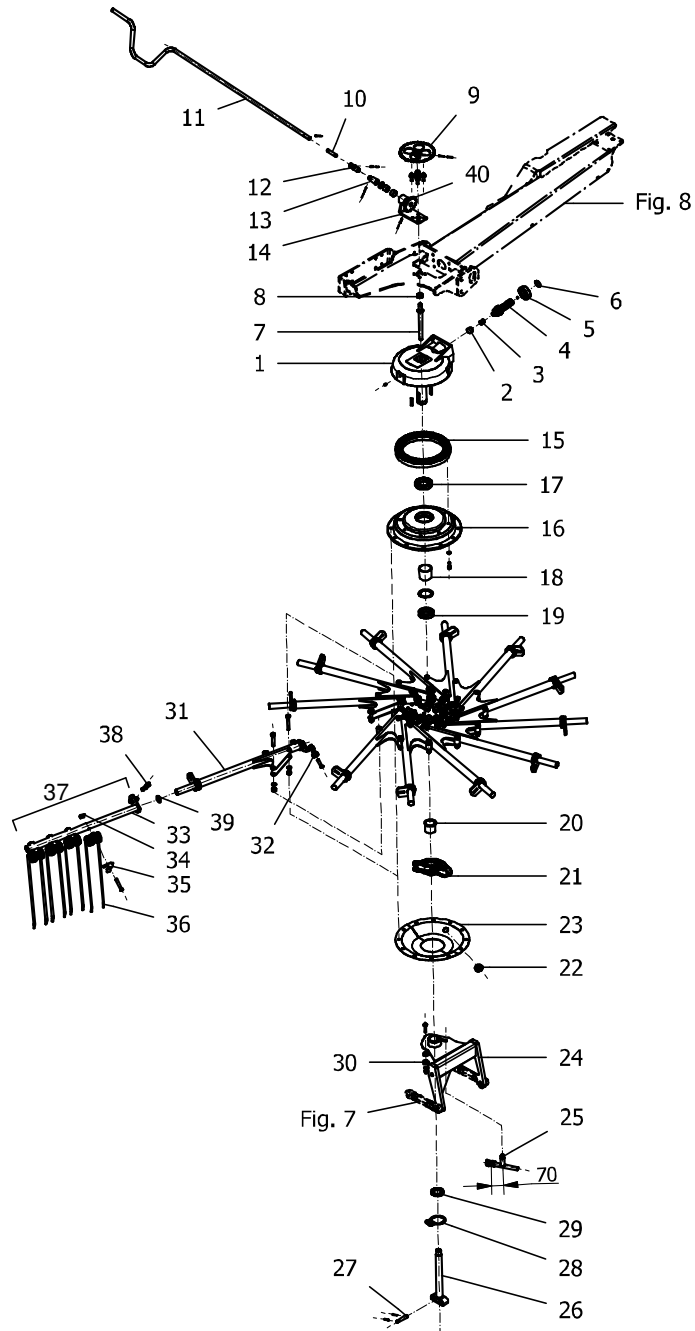
| POS. | VARENUMMER | ANTAL | BENÆVNELSE | BEZEICHNUNG | DESIGNATION | | |
|------|------------|-------|-------------------------------------|-------------|----------------|-----------|---|
| 25. | 1634120 | 1 | KLEMBØJLE KLEMMBUEGEL | | HOOP | | |
| 26. | 0608660 | 2 | KÆDE VIKTORKETTE KPL | | CHAIN | | |
| 27. | 0667230 | 1 | GUMMIPROP GUMMIBUCHSE | | RUBBER BUSHING | | |
| 28. | 2520-134X | 10 | BESKYTTELSE ZINKSCHUTZ | | PROTECTION | | |
| 29. | 2520-137X | 1 | SNAPLÅS VERRIEGELUNG | | CATCH | | |
| 30. | 1633080 | 2 | JUSTERSTANG RADBUEGELARRETIERUNG | | ADJUSTMENT | 1254-3202 | 1 |

Fig. 5



| POS. | VARENUMMER | ANTAL | BENÆVNELSE | BEZEICHNUNG | DESIGNATION | HERTIL, DAZU, TO THIS, A CECI |
|------|------------|-------|---|-----------------------|--|----------------------------------|
| 1. | 1609124 | 1 | HUS GEHAEUSE LAGER 6307 | HOUSING | 1313-1103 1338-0154 | 1 2 |
| 2. | 1401150 | 1 | NÅLELEJE NADELBUCHSE | NEEDLE BUSH | | |
| 3. | 1401160 | 1 | INDERRING INNENRING | INNER RING | | |
| 4. | 0670985 | 1 | SPIDSHJUL AKSEL RITZELWELLE Z = 9 | PINION SHAFT | | |
| 5. | 1331-4302 | 1 | KUGLELEJE 6307 2RS KUGELLAGER 6307 2RS | BALL BEARING 6307 2RS | | |
| 6. | 1423940 | 1 | SIKRINGSRING SICHERUNGSRING | CIRCLIP | | |
| 7. | 2520-182X | 1 | AKSEL SPINDEL | SPINDLE | | |
| 8. | 0464040 | 1 | AXIAL KUGLELEJE AXIAL-RILLENKUGELLAGER | AXIAL BALL BEARING | | |
| 9. | 1620130 | 1 | TANDHJUL Z=40 ZAHNRAD Z=40 | GEAR Z=40 | 1241-6604 1251-1203 1251-4206 | 1 1 1 |
| 10. | 1635050 | 1 | KRUMTAP KURBELACHSE KURZ | CRANK AXLE | 1251-1104 1251-4106 | 2 2 |
| 11. | 1633170 | 1 | KRUMTAP STANG KURBELSTANGE | CRANK ROD | | |
| 12. | 1638710 | 1 | AKSEL HÆNGSEL WELLENGELENK EINFACH | CARDAN JOINT | | |
| 13. | 2520-301X | 1 | ADAPTER ADAPTER | ADAPTOR | 1241-5504 1251-1104 1251-4106 1335-6022 | 1 1 1 2 |
| 14. | 3520-183X | 1 | HOLDER HALTER | SUPPORT | 1213-4324 1241-3508 | 4 4 |
| 15. | 0646990 | 1 | KRONE HJUL TELLERRAD Z=69 | CROWN WHEEL | | |
| 16. | 2510-099X | 1 | NAV 12 A NABE 12 A | HUB 12 A | 1219-0540 1242-9026 | 8 8 |
| 17. | 0496840 | 1 | KUGLELEJE 6013 RIKGL 6013 | GRV BALL BEAR 6013 | | |
| 18. | 0671440 | 1 | AFSTANDSRØR DISTANZROHR | DISTANCE TUBE | | |
| 19. | 1331-2305 | 1 | KUGLELEJE 6011 2RS KUGELLAGER 6011 2RS | BALL BEARING 6011 2RS | 1241-9933 1241-9934 | 1 1 |
| 20. | 0672380 | 1 | BØSNING BUCHSE | BUSH | | |
| 21. | 0672390 | 1 | KURVESKIVE KURVENSCHIEBE | CAM TRACK | | |
| 22. | 1411550 | 1 | GRIBETAP GRIFFSTOPFEN | HANDHOLD STOPPER | | |
| 23. | 2520-061X | 1 | KLOKKE 12 ARME GLOCKE 12 ARM GETBILT | SOCKET 12 A SHARED | | |
| 24. | 1632540 | 1 | AKSELKONSOL ACHSHALTER | AXLE SUPPORT | | |
| 25. | 0672320 | 1 | JUSTERING VERSTELLUNG | ADJUSTMENT | 1220-6122 | 2 |
| 26. | 1632550 | 1 | LØFTESTANG HUBSTANGE | LIFT CYLINDER | | |

Fig. 5



R-0016/1 R-1610-S

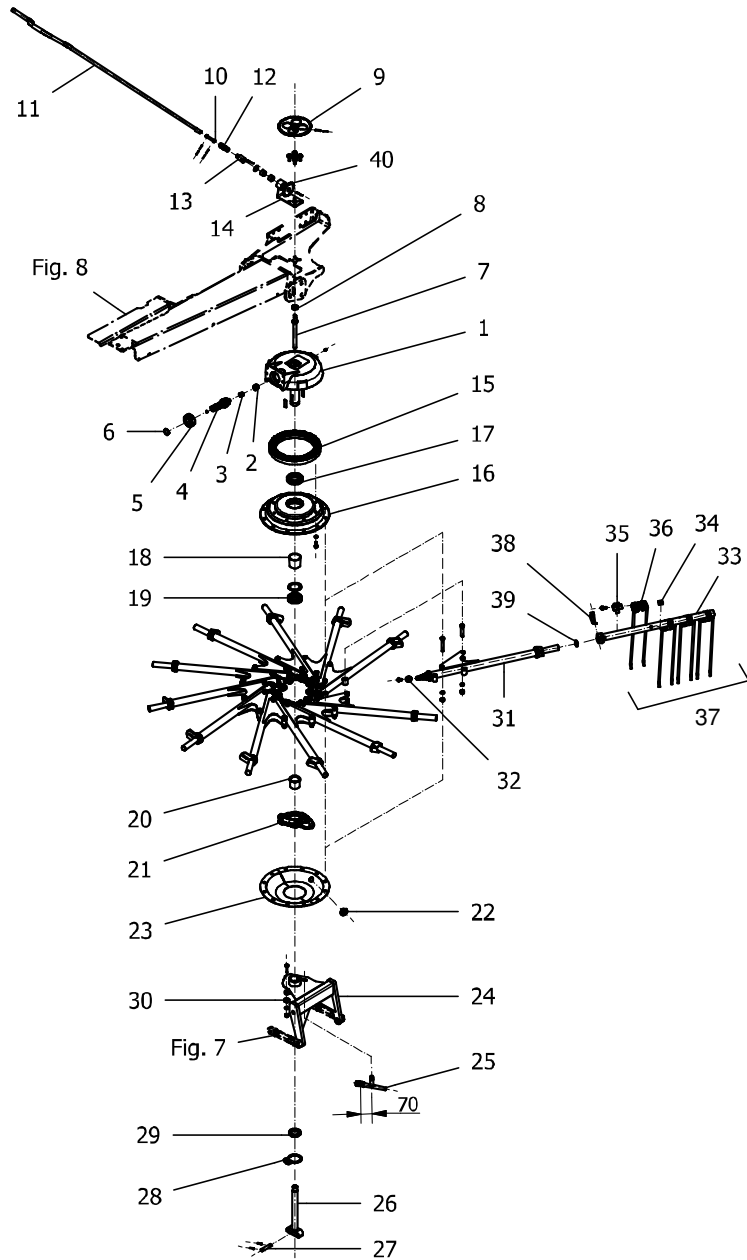
FIG. 5.

>=6850101601

HERTIL, DAZU,
TO THIS, A CECI

| POS. | VARENUMMER | ANTAL | BENÆVNELSE | BEZEICHNUNG | DESIGNATION | | |
|------|------------|-------|--|-------------|--------------------------|---|-----------------------|
| 27. | 0660350 | 1 | TAP BOLZEN | | BOLT | 1251-3203 | 2 |
| 28. | 0635280 | 1 | LÅSEBLIK SICHERUNGSBLECH | | LOCKING PLATE | | |
| 29. | 1220-7920 | 1 | MØTRIK M55 MUTTER M55 | | NUT M55 | | |
| 30. | 0635290 | 1 | PROP BUTZEN | | PLUG | 1214-4126 1220-4321 1241-3403 | 1 1 1 |
| 31. | 3520-084X | 12 | LEJERØR R+ SAMLET LAGERØR R+ KPL | | BEARING PIPE R+ COMPLETE | 1214-4331 1214-4334 1220-4326 1220-4327 1242-9024 | 1 1 1 1 2 |
| 32. | 0464150 | 1 | LØBERING LAUFROLLE | | TROLLEY | 1214-4126 1220-4321 1241-2406 | 1 1 1 |
| 33. | 1633450 | 1 | RIVEARMRØR ZINKENTRÆGERROHR | | RAKE PIPE | | |
| 34. | 0673360 | 4 | MØTRIK, KONKAV KONKAVMUTTER | | CONCAVE NUT | | |
| 35. | 0654351 | 4 | HOLDER HALTER | | SUPPORT | 1214-4322 | 1 |
| 36. | 0699780 | 4 | DOBBELT RIVEFUJEDER GRÅ DOPPELZINKEN GRAU | | DOUBLE TINES GREY | | |
| 37. | 1635100 | 1 | RIVEARM ZINKENTRÆGER | | RAKE ARM | | |
| 38. | 1254-4210 | 1 | TRAKTORSPLIT 12*55+ FORMCLIP 12*55+ | | FORMCLIP 12*55+ | | |
| 39. | 0626910 | 1 | TÆTNINGSRING DICHRING | | PACKING RING | | |
| 40. | 1620141 | 1 | TANDHJUL Z=18 ZAHNRAD Z=18 | | GEAR WHEEL Z=18 | 1251-1104 1251-4106 | 1 1 |

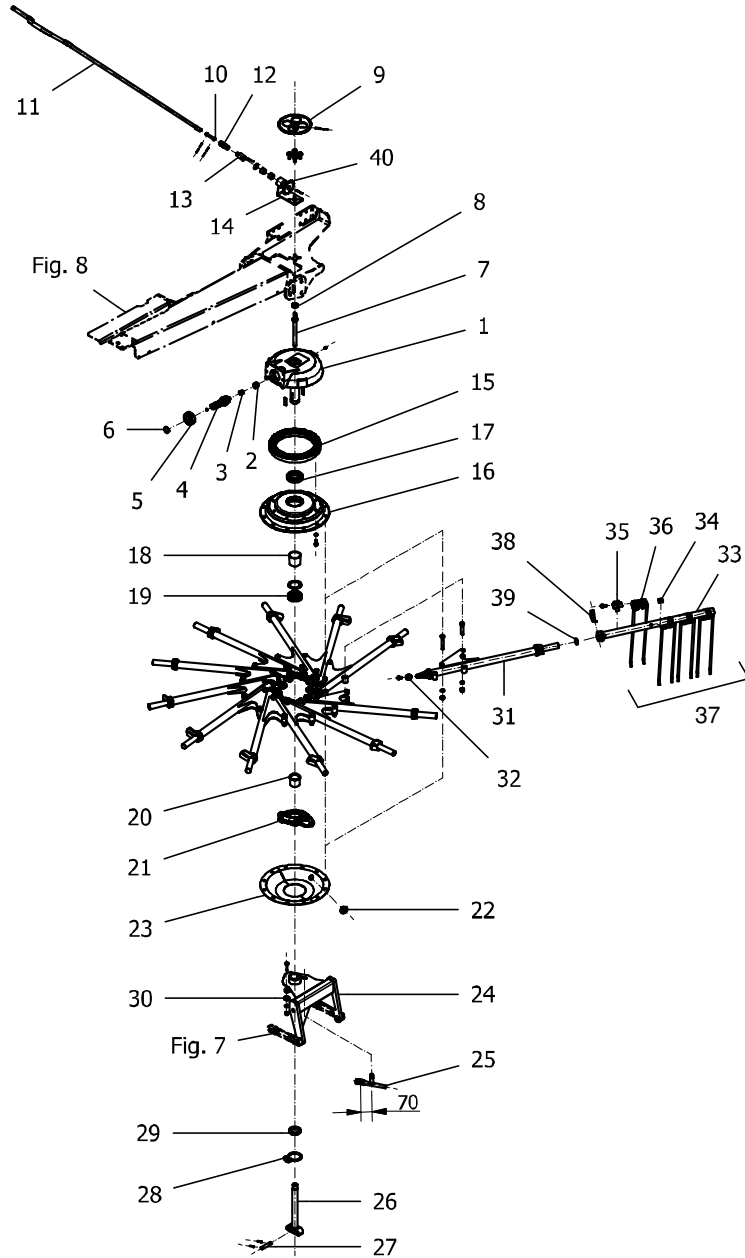
Fig. 6



R-0016/1 R-1610-S FIG. 6. >=6850101601

| POS. | VARENUMMER | ANTAL | BENÆVNELSE | BEZEICHNUNG | DESIGNATION | HERTIL, DAZU, TO THIS, A CECI |
|------|------------|-------|---|-----------------------|--|----------------------------------|
| 1. | 1609124 | 1 | HUS GEHÆUSE LAGER 6307 | HOUSING | 1313-1103 1338-0154 | 1 2 |
| 2. | 1401150 | 1 | NÅLELEJE NADELBUECHSE | NEEDLE BUSH | | |
| 3. | 1401160 | 1 | INDERRING INNENRING | INNER RING | | |
| 4. | 0670985 | 1 | SPIDSHJUL AKSEL RITZELWELLE Z = 9 | PINION SHAFT | | |
| 5. | 1331-4302 | 1 | KUGLELEJE 6307 2RS KUGELLAGER 6307 2RS | BALL BEARING 6307 2RS | | |
| 6. | 1423940 | 1 | SIKRINGSRING SICHERUNGSRING | CIRCLIP | | |
| 7. | 2520-182X | 1 | AKSEL SPINDEL | SPINDLE | | |
| 8. | 0464040 | 1 | AXIAL KUGLELEJE AXIAL-RILLENKUGELLAGER | AXIAL BALL BEARING | | |
| 9. | 1620130 | 1 | TANDHJUL Z=40 ZAHNRAD Z=40 | GEAR Z=40 | 1241-6604 1251-1203 1251-4206 | 1 1 1 |
| 10. | 1635050 | 1 | KRUMTAP KURBELACHSE KURZ | CRANK AXLE | 1251-1104 1251-4106 | 2 2 |
| 11. | 1633170 | 1 | KRUMTAP STANG KURBELSTANGE | CRANK ROD | | |
| 12. | 1638710 | 1 | AKSEL HÆNGSEL WELLENGLENK EINFACH | CARDAN JOINT | | |
| 13. | 2520-301X | 1 | ADAPTER ADAPTER | ADAPTOR | 1241-5504 1251-1104 1251-4106 1335-6022 | 1 1 1 2 |
| 14. | 3520-183X | 1 | HOLDER HALTER | SUPPORT | 1213-4324 1241-3508 | 4 4 |
| 15. | 0646990 | 1 | KRONE HJUL TELLERRAD Z=69 | CROWN WHEEL | | |
| 16. | 2510-099X | 1 | NAV 12 A NABE 12 A | HUB 12 A | 1219-0540 1242-9026 | 8 8 |
| 17. | 0496840 | 1 | KUGLELEJE 6013 RIKGL 6013 | GRV BALL BEAR 6013 | | |
| 18. | 0671440 | 1 | AFSTANDSRØR DISTANZROHR | DISTANCE TUBE | | |
| 19. | 1331-2305 | 1 | KUGLELEJE 6011 2RS KUGELLAGER 6011 2RS | BALL BEARING 6011 2RS | 1241-9933 1241-9934 | 1 1 |
| 20. | 0672380 | 1 | BØSNING BUCHSE | BUSH | | |
| 21. | 0672390 | 1 | KURVESKIVE KURVENSCHIEBE | CAM TRACK | | |
| 22. | 1411550 | 1 | GRIBETAP GRIPFSTOPFEN | HANDHOLD STOPPER | | |
| 23. | 2520-061X | 1 | KLOCKE 12 ARME GLOCKE 12 ARM GETEILT | SOCKET 12 A SHARED | | |
| 24. | 1632540 | 1 | AKSELKONSOL ACHSHALTER | AXLE SUPPORT | | |
| 25. | 0672320 | 1 | JUSTERING VERSTELLUNG | ADJUSTMENT | 1220-6122 | 2 |
| 26. | 1632550 | 1 | LØFTESTANG HUBSTANGE | LIFT CYLINDER | | |

Fig. 6



R-0016/1 R-1610-S

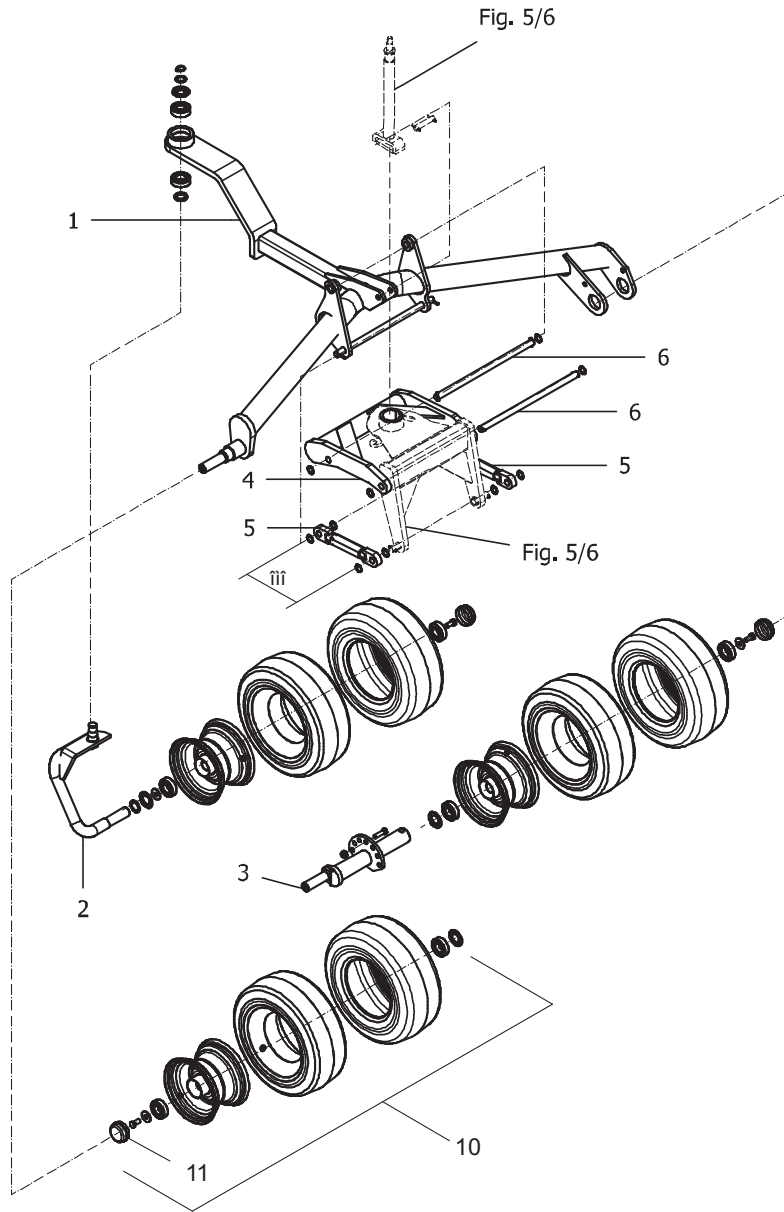
FIG. 6.

>=6850101601

HERTIL, DAZU,
TO THIS, A CECI

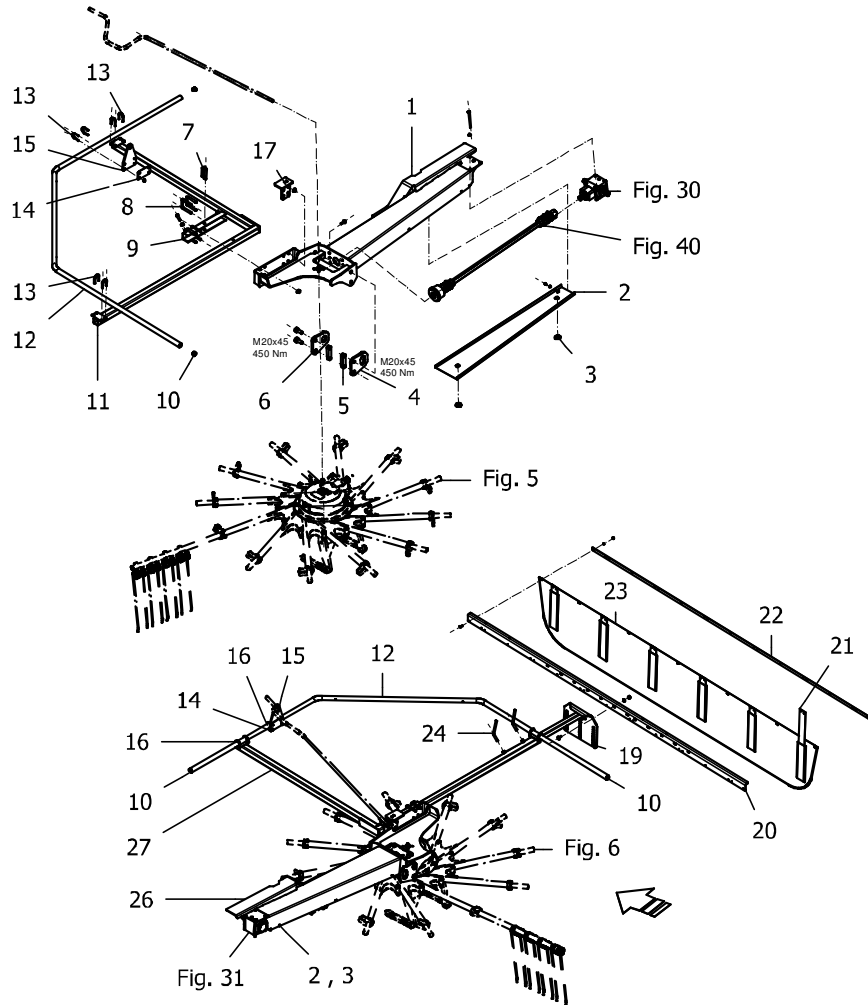
| POS. | VARENUMMER | ANTAL | BENÆVNELSE | BEZEICHNUNG | DESIGNATION | | |
|------|------------|-------|--|-------------|--------------------------|---|-----------------------|
| 27. | 0660350 | 1 | TAP BOLZEN | | BOLT | 1251-3203 | 2 |
| 28. | 0635280 | 1 | LÅSEBLIK SICHERUNGSBLECH | | LOCKING PLATE | | |
| 29. | 1220-7920 | 1 | MØTRIK M55 MUTTER M55 | | NUT M55 | | |
| 30. | 0635290 | 1 | PROP BUTZEN | | PLUG | 1214-4126 1220-4321 1241-3403 | 1 1 1 |
| 31. | 3520-084X | 12 | LEJERØR R+ SAMLET LAGERØR R+ KPL | | BEARING PIPE R+ COMPLETE | 1214-4331 1214-4334 1220-4326 1220-4327 1242-9024 | 1 1 1 1 2 |
| 32. | 0464150 | 1 | LØBERING LAUFROLLE | | TROLLEY | 1214-4126 1220-4321 1241-2406 | 1 1 1 |
| 33. | 1633450 | 1 | RIVEARMRØR ZINKENTRÆGERROHR | | RAKE PIPE | | |
| 34. | 0673360 | 4 | MØTRIK, KONKAV KONKAVMUTTER | | CONCAVE NUT | | |
| 35. | 0654351 | 4 | HOLDER HALTER | | SUPPORT | 1214-4322 | 1 |
| 36. | 1600661 | 4 | DOBBELT RIVEFUJEDER GRÅ DOPPELZINKEN GRAU | | DOUBLE TOOTH GREY | | |
| 37. | 1635110 | 1 | RIVEARM ZINKENTRÆGER | | RAKE ARM | | |
| 38. | 1254-4210 | 1 | TRAKTORSPLIT 12*55+ FORMCLIP 12*55+ | | FORMCLIP 12*55+ | | |
| 39. | 0626910 | 1 | TÆTNINGSRING DICHRING | | PACKING RING | | |
| 40. | 1620141 | 1 | TANDHJUL Z=18 ZAHNRAD Z=18 | | GEAR WHEEL Z=18 | 1251-1104 1251-4106 | 1 1 |

Fig. 7



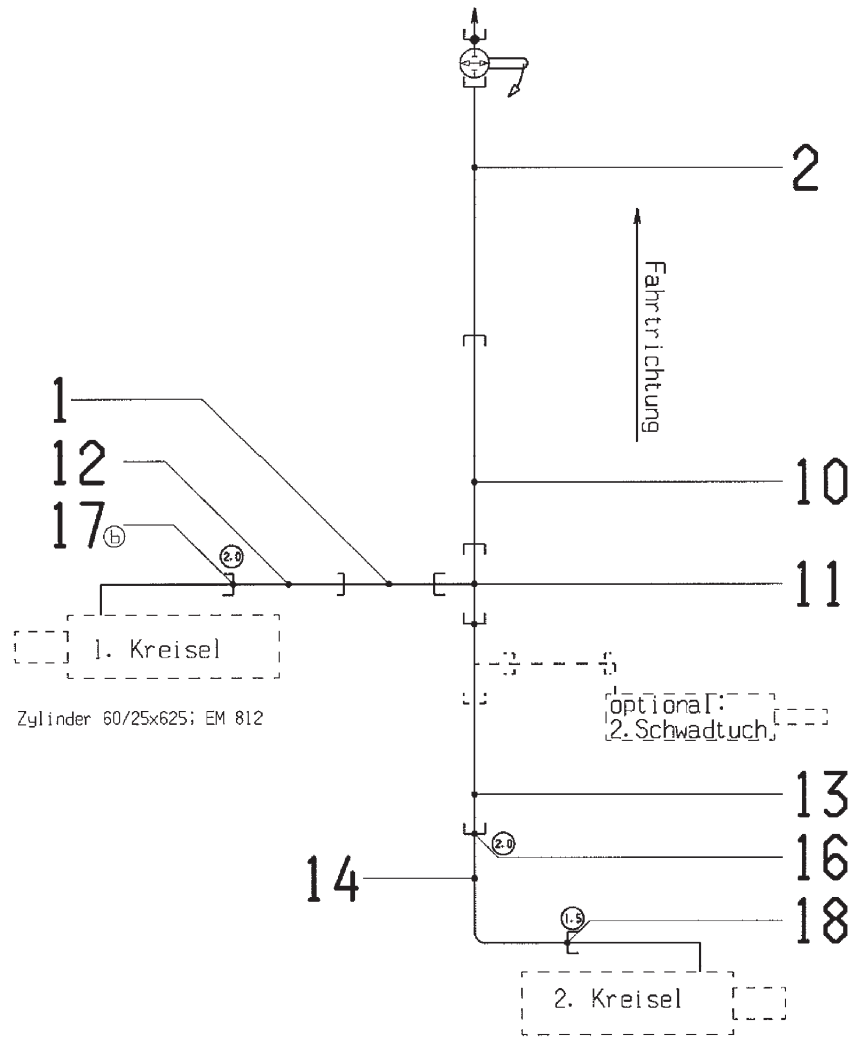
| POS. | VARENUMMER | ANTAL | BENÆVNELSE | BEZEICHNUNG | DESIGNATION | HERTIL, DAZU, TO THIS, A CECI | |
|------|------------|-------|--|-------------|-----------------------------|--|----------------------------|
| 1. | 1632530 | 1 | STEL KREISELFAHRWERK | | CHASSIS | | |
| 2. | 1638660 | 1 | HJUL BØJLE RADBÜGEL | | WHEEL BAR | 0465390 1241-6904 1241-7907 1255-2207 1331-3303 1426450 | 1 1 1 1 1 1 |
| 3. | 3520-066X | 1 | EXCENTRIK AKSEL EXZENTERACHSE | | EXCENTRIC AXLE | 1213-4422 1220-4321 1251-9010 | 1 1 1 |
| 4. | 0659220 | 1 | DREJERAMME GELENKRÄHMEN | | HINGED FRAME | | |
| 5. | 1616360 | 2 | BARDUNSTRAMMER SPANNSCHLOSS KPL | | TURNBUCKLE | 1241-5201 1251-4201 | 4 2 |
| 6. | 0667660 | 2 | TAP 20X437 BOLZEN 20X437 | | PIN 20X437 | 1241-5201 1251-4203 | 2 2 |
| 10. | 2520-011X | 3 | STØTTEHJUL 16X6,5 (10PR) STÜTZRAD 16X6,5 (10PR) | | SUPPORT WHEEL 16X6,5 (10PR) | 1213-4224 1241-3509 1413200 | 1 1 1 |
| 11. | 2520-117X | 2 | ENDESTYKKE ABSCHLUSSKAPPE | | END CAP | | |

Fig. 8



| POS. | VARENUMMER | ANTAL | BENÆVNELSE | BEZEICHNUNG | DESIGNATION | HERTIL, DAZU, TO THIS, A CECI |
|------|------------|-------|--|------------------------|--|----------------------------------|
| 1. | 1634250 | 1 | ROTORHOLDER KREISELHALTER LI | GYROHOLDER | 1213-4322 1214-3432 1220-3321 1241-2403 | 6 4 4 4 |
| 2. | 1633210 | 2 | SKÆRM SCHUTZBLECH UNTEN | GUARD | 1213-1222 1220-1922 1241-1206 | 6 6 6 |
| 3. | 1411550 | 4 | GRIBETAP GRIFFSTOPFEN | HANDHOLD STOPPER | | |
| 4. | 2520-229X | 2 | LEDEPLADE, LANG FÜHRUNGSPLATTE, LANG | SUPPORT PLATE, LONG | 1213-6424 | 2 |
| 5. | 1641050 | 4 | GEVINDSTYKKE GEWINDEKLOTZ | THREADBLOCK | | |
| 6. | 2520-228X | 2 | LEDEPLADE, KORT FÜHRUNGSPLATTE, KURZ | SUPPORT PLATE, SHORT | 1213-6424 | 2 |
| 7. | 0602140 | 2 | FJEDERBOLT 12X80/95 FEDERSTECKBOLZEN 12X80/95 | SAFETY PIN | | |
| 8. | 1219-0923 | 8 | U-BOLT U-BOLZEN | U-BOLT | 1220-4322 | 2 |
| 9. | 1633240 | 2 | BÆREARM TRÆGERFUEHRUNG | BEARING CHANNEL | 1213-4422 1220-4321 | 1 1 |
| 10. | 1407610 | 4 | PROP STOPFEN, LAMELLEN | CONNECTOR | | |
| 11. | 1633220 | 1 | BESKYTTELSBØJLEARM V. SCHUTZBUEGELTRAEGER LI | SAFETYBAR GIRDER LEFT | | |
| 12. | 1633150 | 2 | BESKYTTELSBØJLE SCHUTZBUEGEL | PROTECTION HOOP | | |
| 13. | 0626580 | 12 | U-BØJLE M8X34 BUEGELSCHRAUBE HRD M 8X34 | STIRRUP BOLT | 1220-2620 | 2 |
| 14. | 2520-010X | 2 | PLADE BLECHPLATTE | SHEET | | |
| 15. | 1633190 | 2 | KONSOL KURBELFUEHRUNG | CRANK CHANNEL | | |
| 17. | 3520-041X | 2 | STOPKLODS ANSCHLAG | STOP | | |
| 18. | 1624350 | 1 | BLADFJEDER BLATTFEDER KZ | COACH SPRING | | |
| 19. | 1633260 | 1 | SKÅRDUGHOLDER SCHWADTUCHHALTER | SWATH GUARDHOLDER | 1215-3226 1220-3321 1241-2401 | 3 3 3 |
| 20. | 1605632 | 1 | HOLDER TIL DUG SCHWADFORMERHALTER | WINDROW CLOTH SUPPORT | 1215-1222 1220-1323 1241-1208 | 19 19 19 |
| 21. | 0621620 | 5 | BLADFJEDER BLATTFEDER | PLATE SPRING | | |
| 22. | 1605650 | 1 | GUIDE RAIL LEISTE | LISTE | | |
| 23. | 1605641 | 1 | SKÅRFORMER SCHWADFORMER 2.9M | SWATH FORMER | | |
| 24. | 0124130 | 2 | SKRUE KNEBELSCHRAUBE | TOGGLE BOLT | | |
| 26. | 1634260 | 1 | ROTORHOLDER H. KREISELHALTER RE | GYROHOLDER RIGHT | 1213-4322 1214-3432 1220-3321 1241-2403 | 6 4 4 4 |
| 27. | 1633230 | 1 | BESKYTTELSBØJLEARM H. SCHUTZBUEGELTRAEGER RE. | SAFETYBAR GIRDER RIGHT | | |

Fig. 9



Zylinder 60/25x625; EM 812

⊘ Drosselblende ϕ X.X mm

Darstellung nur schematisch!

R-0016/1 R-1610-S

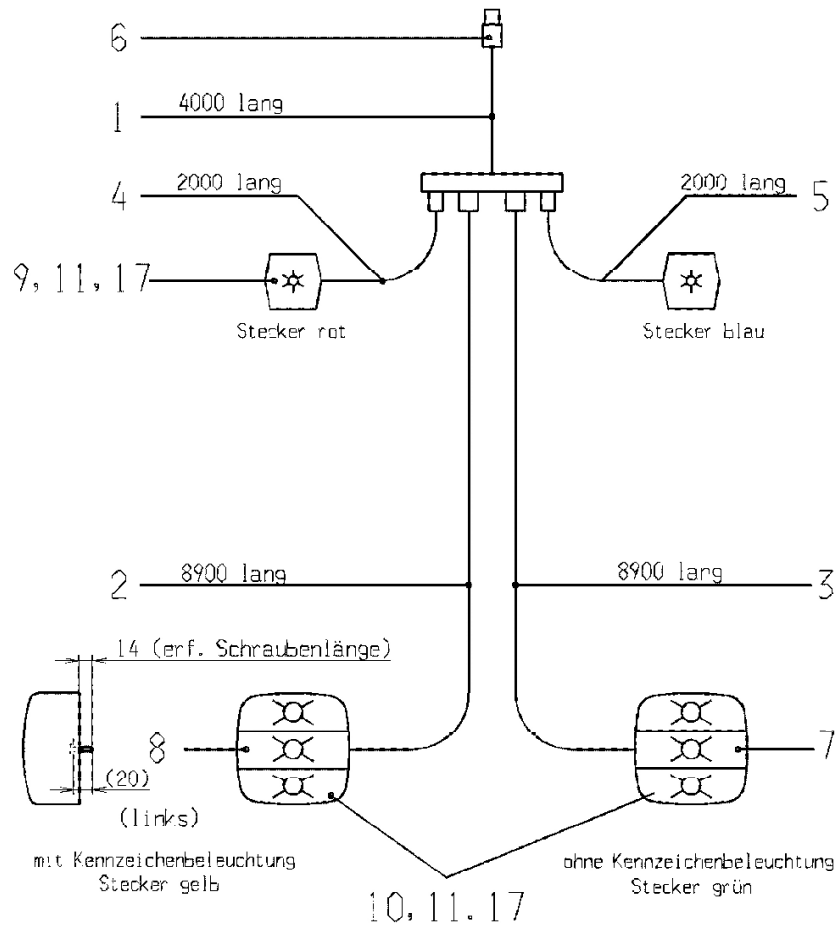
FIG. 9.

>=6850101601

HERTIL, DAZU,
TO THIS, A CECI

| POS. | VARENUMMER | ANTAL | BENÆVNELSE | BEZEICHNUNG | DESIGNATION |
|------|------------|-------|--|-------------|--------------------|
| 1. | 1635010 | 1 | RØRLEDNING MONT ROHRLEITUNG MONT | | PIPELINE MOUNTED |
| 2. | 1635020 | 1 | SLANGELEDNING MED HOLDER SCHLAUCHLEITUNG MIT GRIF | | HOSE LINE WITH AER |
| 10. | 1427510 | 1 | SLANGELEDNING SCHLAUCHLEIT. 6X2500 D 20066 | | HOSE PIPE |
| 11. | 0407531 | 1 | T-STYKKE T-STUTZEN | | T-PIECE |
| 12. | 1317-5018 | 1 | SLANGE 6X1250 AD SCHLAUCH 6X1250 AD | | HOSE 6X1250 AD |
| 13. | 1427510 | 1 | SLANGELEDNING SCHLAUCHLEIT. 6X2500 D 20066 | | HOSE PIPE |
| 14. | 1317-5019 | 1 | SLANGE 6X1250 AA SCHLAUCH 6X1250 AA | | HOSE 6X1250 AA |
| 16. | 0699230 | 1 | DYSE BLENDE 2.0 MM | | ORIFICE |
| 17. | 0699230 | 2 | DYSE BLENDE 2.0 MM | | ORIFICE |
| 18. | 0643370 | 1 | DYSE 1,5MM BLENDE 1,5 MM | | ORIFICE 1,5MM |

Fig. 10



Nennspannung 12 V
schematische Darstellung

R-0016/1 R-1610-S

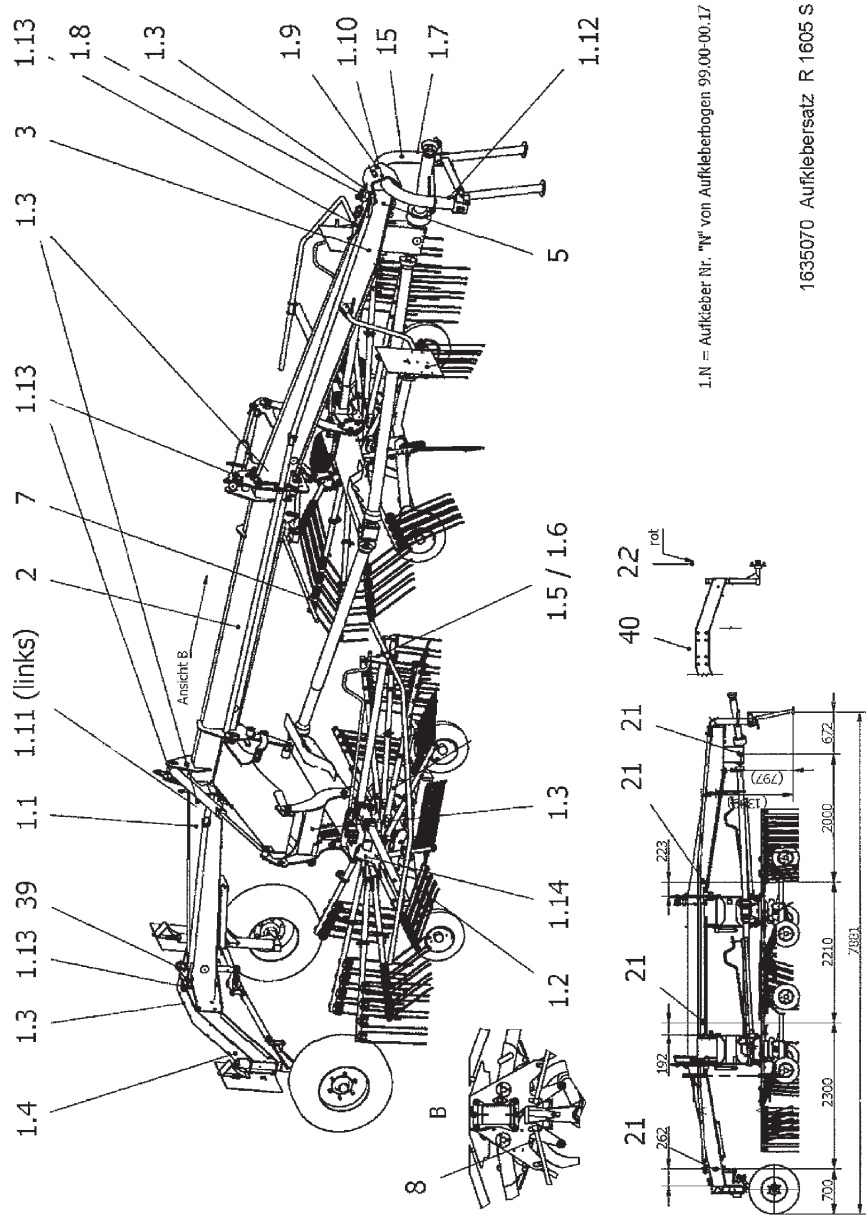
FIG. 10.

>=6850101601

HERTIL, DAZU,
TO THIS, A CECI

| POS. | VARENUMMER | ANTAL | BENÆVNELSE | BEZEICHNUNG | DESIGNATION |
|------|------------|-------|--|-------------|--------------------------|
| 1. | 0668371 | 1 | KABEL 6 LEDN HAUPTKABEL 6 ADERIG | | CABLE 6 WIRE |
| 2. | 0668381 | 1 | KABEL BAG 4 LEDN. ZWISCHENKABEL HI 4 ADRIG | | CABLE REAR 4 WIRE |
| 3. | 0668391 | 1 | KABEL BAG 4 LEDN ZWISCHENKABEL HI 4 ADRIG | | KABEL REAR 4 WIRE |
| 4. | 0668401 | 2 | KABEL FORREST 2 LEDERE ZWISCHENKABEL VO 2 ADRIG | | CABLE AHEAD 2 WIRE |
| 5. | 1636930 | 1 | KABEL FORREST 2 LEDERE ZWISCHENKABEL VO 2 ADRIG | | CABLE AHEAD 2 WIRE |
| 6. | 1425190 | 1 | 7-HANSTIK PLASTIC 7-STECKER (KUNSTSTOFF) | | 7-QUICK RELEASE PLASTICS |
| 7. | 1425200 | 1 | 3-FUNKTIONS LYGTE DREIFUNKTIONSLEUCHTE | | 3-OPERATIONS LAMP |
| 8. | 1425210 | 1 | 3-FUNKTIONS LYGTE DREIFUNKTIONSLEUCHTE | | 3-OPERATIONS LAMP |
| 9. | 1425220 | 2 | POSITIONSLAMPE POSITIONSLEUCHTE | | SIDE LIGHT |
| 10. | 1425230 | 4 | KUGLE LAMPE KUGELLAMPE | | BALL LAMP |
| 11. | 1425240 | 4 | LAMPEN 12V 5W SOFITTE 12V 5W | | ILLUMINAT 12V 5W |
| 17. | 1425900 | 4 | KABELHOLDER (5ER) KABELSCHELLE (5ER) | | CABLECLAMP (5ER) |

Fig. 13



| POS. | VARENUMMER | ANTAL | BENÆVNELSE | BEZEICHNUNG | DESIGNATION | HERTIL, DAZU, TO THIS, A CECI |
|------|------------|-------|--|----------------------------|----------------------------|----------------------------------|
| 1. | 3889-303X | 1 | TRANSFER R1610 S AUFKLEBER R1610 S | TRANSFER R1610 S | TRANSFER R1610 S | |
| 2. | PR80-7169 | 2 | JF-STOLL 1610S (120MM) JF-STOLL 1610S (120MM) | JF-STOLL 1610S (120MM) | JF-STOLL 1610S (120MM) | |
| 3. | PR80-7043 | 2 | JF-STOLL LOGO 120 MM JF-STOLL LOGO 120 MM | JF-STOLL LOGO 120 MM | JF-STOLL LOGO 120 MM | |
| 5. | 2600-833X | 2 | TYPESKILT TYPENSCHILD | IDENTIFICATION PLATE | IDENTIFICATION PLATE | |
| 7. | 0688000 | 1 | KLISTERMÆRKE RIVE RISIKO AUFKLEBER ZINKENGEFAHR | LABEL TOOTH DANGER | LABEL TOOTH DANGER | |
| 8. | 1643150 | 1 | KLISTERMÆRKE R1610 JUSTERING AUFKLEBER R 1610 VERSTELLUNG | LABEL R 1610 ADJUSTMENT | LABEL R 1610 ADJUSTMENT | |
| 15. | 1650220 | 1 | SIKKERHEDSKLISTERMÆRKE AUFKLEBERBOGEN SICHERHEIT UNI | STICKER SECURITY | STICKER SECURITY | |
| 21. | 0482690 | 8 | REFLEKS RUECKSTRAHLER RD 60 | REAR REFLECTOR | REAR REFLECTOR | |
| 22. | 1400920 | 2 | REFLEKS 31.5X70 RØD RUECKSTRAHLER 31.5X70 ROT | REAR REFLECTOR 31.5X70 RED | REAR REFLECTOR 31.5X70 RED | |
| 40. | 1613860 | 1 | KLISTERMÆRKE HASTIGHED 40 KMH AUFKLEBER GESCHW 40 KMH | LABEL CRUISE 40 KMH | LABEL CRUISE 40 KMH | |

Fig. 30

R-0016/1 R-1610-S

FIG. 30.

>=6850101601

HERTIL, DAZU,
TO THIS, A CECI

| POS. | VARENUMMER | ANTAL | BENÆVNELSE | BEZEICHNUNG | DESIGNATION | | |
|------|------------|-------|--|-------------|-------------------------|--|--|
| 1. | 1634900 | 1 | VINKELGEAR GT15 T 1:1 WINKELGETRIEBE GT15 T 1:1 | | ANGULAR GEAR GT15 T 1:1 | | |

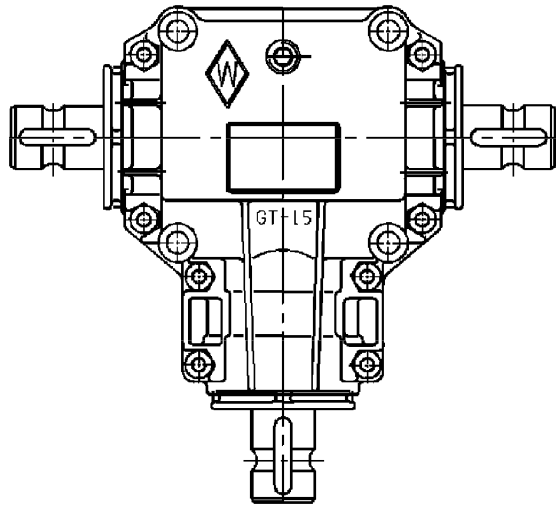


Fig. 31

R-0016/1 R-1610-S

FIG. 31.

>=6850101601

HERTIL, DAZU,
TO THIS, A CECI

| POS. | VARENUMMER | ANTAL | BENÆVNELSE | BEZEICHNUNG | DESIGNATION | | |
|------|------------|-------|--|-------------|-------------------------|--|--|
| 1. | 1634910 | 1 | VINKELGEAR GT15 LB1:1 WINKELGETRIEBE GT15 LB1:1 | | ANGULAR GEAR GT15 LB1:1 | | |

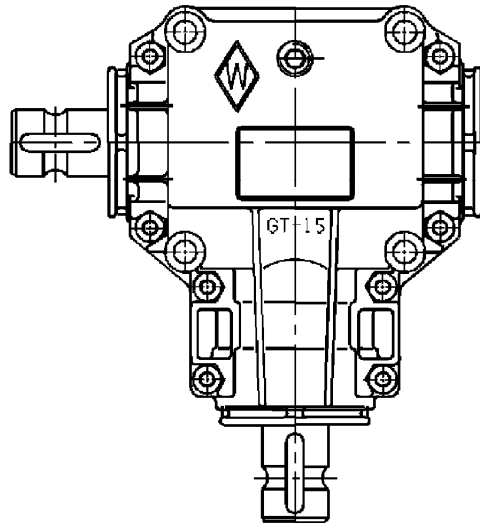
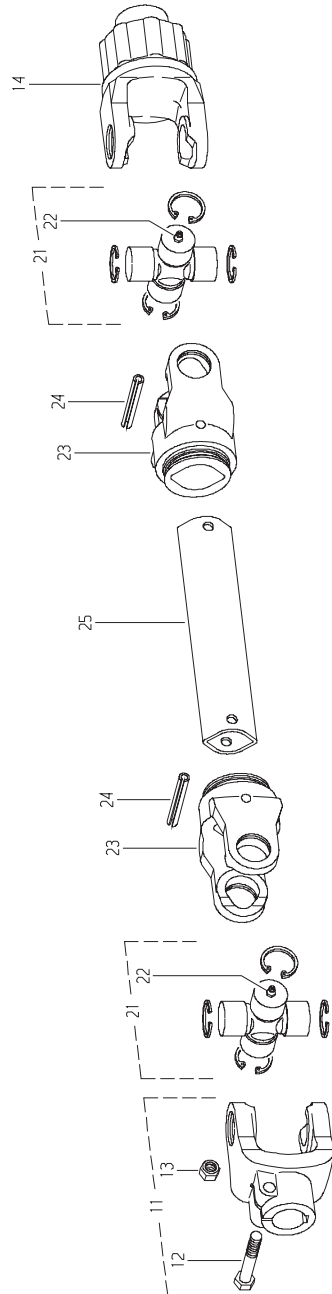


Fig. 40



R-0016/1 R 1610-S

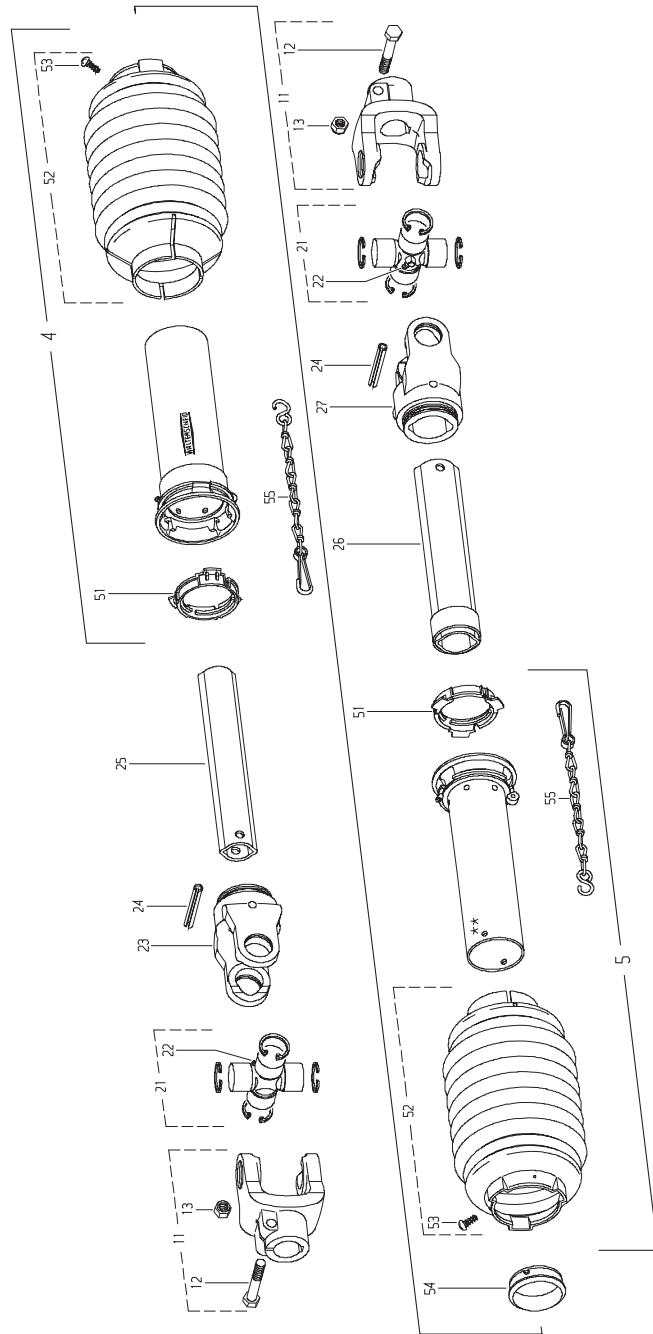
FIG. 40.

>=6850101601

HERTIL, DAZU,
TO THIS, A CECI

| POS. | VARENUMMER | ANTAL | BENEVNELSE | BEZEICHNUNG | DESIGNATION |
|------|------------|-------|---|-------------|------------------------------|
| . | 1632770 | | INDGANGSAKSEL ANTRIEBSWELLE W 2100 | | PTO. DRIVE SHAFT |
| 11. | 1340-9280 | 1 | KOBLINGSGAFFEL STERNRATSCH | | RADIAL PIN CLUTCH |
| 12. | 1214-4324 | 1 | STÅLSKRUE M12-75 STAHLSECHSKANTSCHRAUBE M12-75 | | STEEL SCREW M12-75 |
| 13. | 1220-4323 | 2 | NYLOC MØTRIK M12 KV 10 NYLOC MUTTER M12 Q 10 | | NYLOC NUT M12 Q 10 |
| 14. | 1340-9278 | 1 | KOBLINGSGAFFEL STERNRATSCH | | RADIAL PIN CLUTCH |
| 21. | 1340-9279 | 2 | KRYDS GABEL | | YOKE |
| 22. | 1313-1101 | 2 | SMØRENIPPEL SCHMIERNIPPEL | | GREASE NIPPLE |
| 23. | 1341-9071 | 2 | GAFFEL GABEL | | FORK |
| 24. | 1251-5405 | 2 | SPENDESTIFT 8,0-50 SPANNSTIFT 8,0-50 | | SPECIAL PIN 8,0-50 |
| 25. | 1501-0102 | 1 | PROFILRØR ØA 1000 MM PROFILROHR GR.ØA 1000 MM | | PROFILE TUBE SIZE ØA 1000 MM |

Fig. 41



R-0016/1 R 1610-S

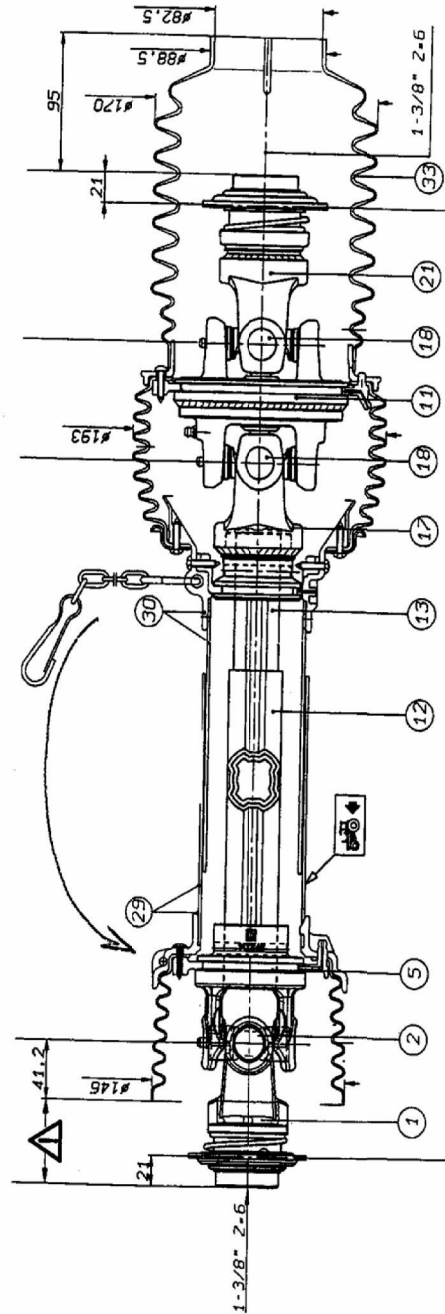
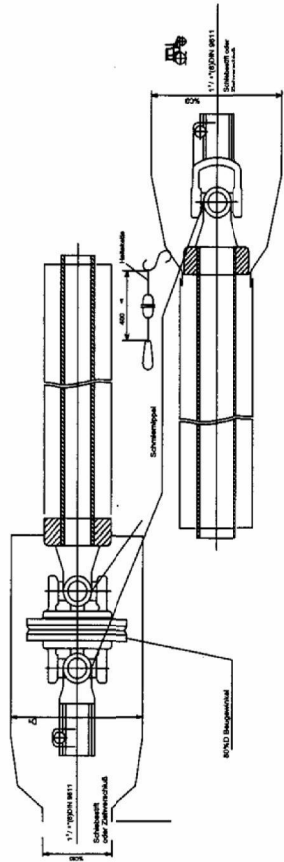
FIG. 41.

>=6850101601

HERTIL, DAZU,
TO THIS, A CECI

| POS. | VARENUMMER | ANTAL | BENEVNELSE | BEZEICHNUNG | DESIGNATION |
|------|------------|-------|--|-------------|-------------------------------|
| . | 1639540 | | KARDANAKSEL W 2200 GELENKWELLE W 2200 | | PTO-SHAFT W 2200 |
| 4. | 1501-0006 | 1 | UDV.BESKYTTELSESRØR 1000 MM AUSSENSCHUTZROHR 1000 MM | | OUTER PROTECTION TUBE 1000 MM |
| 5. | 1501-0005 | 1 | INDV. BESKYTTELSESRØR 1000 MM INNERSCHUTZROHR 1000 MM | | INNER PROTECTION TUBE 1000 MM |
| 11. | 1340-9276 | 2 | GAFFEL GABEL | | YOKE |
| 12. | 1214-4226 | 2 | STÅLSKRUE M12-60 STAHLSECHSKANTSCHRAUBE M12-60 | | STEEL SCREW M12-60 |
| 13. | 1220-4323 | 2 | NYLOC MØTRIK M12 KV 10 NYLOC MUTTER M12 Q 10 | | NYLOC NUT M12 Q 10 |
| 21. | 1341-9154 | 2 | KRYDS FOR KARDANLED KREUZGARNITUR | | CENTRE CROSS |
| 22. | 1341-9190 | 2 | SMØRENIPPEL 67,5 GR. SCHMIERNIPPEL 67,5 GR. | | GREASE NIPPLE 67,5 GR. |
| 23. | 1341-9029 | 1 | KOBLINGSGAFFEL AUFSTECKGABEL | | CLUTCH FORK |
| 24. | 1251-6505 | 2 | SPÆNDESSTIFT 10-65 SPANNSTIFT 10-65 | | SPECIAL PIN 10-65 |
| 25. | 1501-0129 | 1 | PROFILRØR OV-1400 PROFILRØHR GR. OV-1400 | | PROFILETUBE SIZE OV-1400 |
| 26. | 1501-0130 | 1 | PROFILRØR I-1400 PROFILRØHR GR. I-1400 | | PROFILETUBE SIZE I-1400 |
| 27. | 1341-9028 | 1 | KOBLINGSGAFFEL AUFSTECKGABEL | | CLUTCH FORK |
| 51. | 1341-9616 | 2 | LØBERING LAUFHALTERING | | BALL SUPPORT RING |
| 52. | 1501-0021 | 2 | PLASTIKSKERM SD15 RP12 Ø165 SCHUTZTRICHTER SD15 RP12 Ø165 | | PLASTIC GUARD SD15 RP12 Ø165 |
| 53. | 1341-9411 | 2 | SKRUE SCHRAUBE | | SCREW |
| 54. | 1340-9277 | 1 | GLIDERING RING | | RING |
| 55. | 1341-9641 | 1 | HOLDEKEDE HALTEKETTE | | CHAIN |

Fig. 42



R-0016/1 R-1610-S

FIG. 42.

>=6850101601

HERTIL, DAZU,
TO THIS, A CECI

| POS. | VARENUMMER | ANTAL | BENÆVNELSE | BEZEICHNUNG | DESIGNATION |
|------|------------|-------|--|-------------|---------------------------|
| . | 0668064 | | KO-AKSEL / KARDANAKSEL GELENKWELLE SPT400 GR.2 | | PTO. DRIVE SHAFT |
| 1. | 1425320 | 1 | KOBLINGSGAFFEL GABEL KUGEL-ZIEHVERSCHLUSS | | FORK BALL CLOSING |
| 2. | 1425330 | 1 | KARDANLÆT KREUZGELENKGARNITUR | | UNIVERSAL JOINT SET |
| 5. | 1425340 | 1 | INDERGAFFEL KUGELLÆS INNENGABEL 4-KEIL-AU ENRO | | INSIDEFORK BALL CLOSING |
| 11. | 1425350 | 1 | CENTER GAFFEL ZENTRALGABEL | | CENTRAL FORK |
| 12. | 1425360 | 1 | PROFILRØR-4-KILE UD PROFILROHR-4-KEIL AU | | PROFILE TUBE-4-SPLINE OUT |
| 13. | 1425370 | 1 | PROFILRØR-4-KILE IND PROFILROHR-4-KEIL IN | | PROFILE TUBE-4-SPLINE IN |
| 17. | 1425380 | 1 | GAFFEL 4-KILE-INDERRØR GABEL 4-KEIL-INNENROHR | | FORK 4-SPLINE-INNER TUBE |
| 18. | 1425390 | 2 | KARDANLÆT KREUZGELENKGARNITUR | | UNIVERSAL JOINT SET |
| 21. | 1425400 | 1 | KOBLINGSGAFFEL GABEL KUGEL-ZIEHVERSCHLUSS | | FORK BALL CLOSING |
| 29. | 1425410 | 1 | BESKYTTELSERØR MED RING SCHUTZROHR AU EN MIT RING | | TUBE PROTECTION WITH RING |
| 30. | 1425420 | 1 | BESKYTTELSERØR INDV M. RING SCHUTZROHR INNEN MIT RING | | PROTECTIVE TUBE WITH RING |
| 33. | 1425430 | 1 | SKÆRM MANCHET SCHUTZMANSCHEETTE | | BOOT |

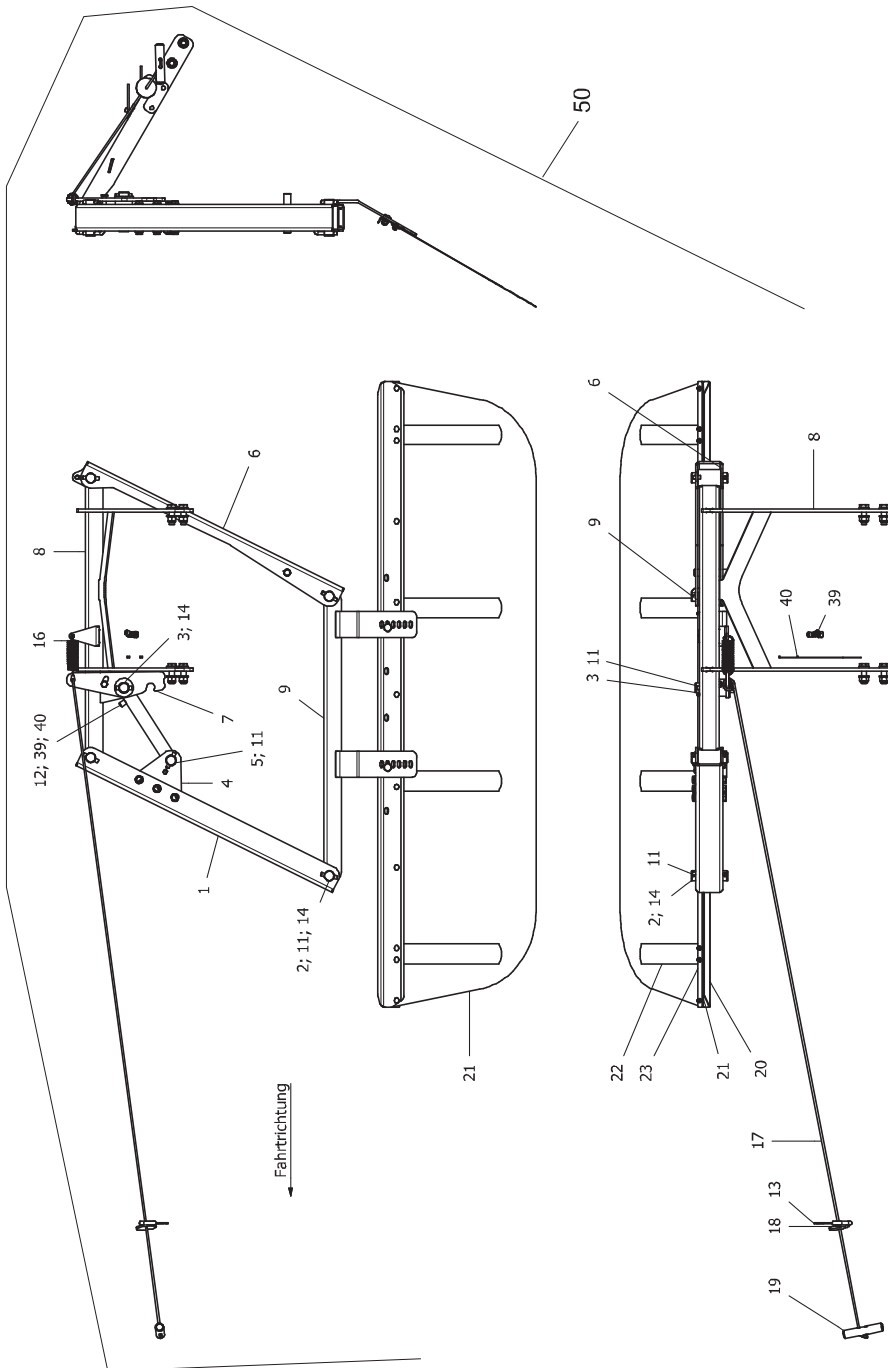
Fig. 80

TILBEHØR - ZUBEHÖR - ACCESSORIES

R-0016/1 R-1610-S

FIG. 80.
TILBEHØR, ZUBEHÖR, ACCESSORIES

>=6850101601



| POS. | VARENUMMER | ANTAL | BENÆVNELSE | BEZEICHNUNG | DESIGNATION | HERTIL, DAZU, TO THIS, A CECI | |
|------|------------|-------|---|-------------|----------------------------|--|-------------------------------|
| 1. | 2520-258X | 1 | STYR FORREST LENKER VORN | | CONNECTING ROD FRONT | | |
| 2. | 2520-260X | 4 | BOLT BOLZEN | | BOLT | 1251-6406 | 1 |
| 3. | 2520-266X | 1 | BOLT BOLZEN | | BOLT | 1241-7601 1251-6406 | 1 1 |
| 4. | 2520-268X | 2 | BESLAG BESCHLAG | | FITTINGS | 1213-4321 1220-4321 1241-3403 | 3 3 6 |
| 5. | 2520-275X | 1 | BOLT BOLZEN | | BOLT | 1251-6406 | 1 |
| 6. | 3520-163X | 1 | STYR BAGERST LENKER HINTEN | | CONNECTING ROD REAR | | |
| 7. | 3520-164X | 1 | LEVER HEBEL | | LEVER | 1214-3122 1220-3122 | 1 2 |
| 8. | 3520-165X | 1 | DRAGER TRAEGER | | GIRDER | 1213-5522 1220-5321 1241-4502 | 4 4 8 |
| 9. | 3520-166X | 1 | STYR UNDERSTE LENKER UNTEN | | CONNECTING ROD LOWER | | |
| 11. | 1622830 | 6 | TAP 10X14X60 WINKELSTIFT 10X14X60 | | DOWEL 10X14X60 | | |
| 12. | 1644040 | 1 | LØFTCYLINDER 25/140 HUBZYLINDER 25/140 | | LIFT CYLINDER 25/140 | | |
| 13. | 1644300 | 1 | TOVFØRING SEILFUHRUNG | | FAIRLEAD | | |
| 14. | 0495050 | 9 | GLIDELEJE BØSNING GLEITLAGERBUCHSE | | BUSH | | |
| 16. | 1423660 | 1 | FJEDERHOLDER 2.8X30X86.6 ZUGFEDER 2.8X30X86.6 | | TENSION SPRING 2.8X30X86.6 | | |
| 17. | 0668440 | 1 | TOV D=6/L=4500 SEIL D=6/L=4500 | | CABLE D=6/L=4500 | | |
| 18. | 0651640 | 1 | SKIVE SCHEIBE | | WASHER | | |
| 19. | 0195140 | 1 | HÅNDTAG GRIF | | LEVER | | |
| 20. | 0621630 | 1 | SKÅRFORMERHOLDER SCHWADFORMERHALTER | | WINDROW CLOTH SUPPORT | 1215-1123 1215-3226 1220-1323 1220-3122 1241-1208 1241-2401 | 13 2 13 2 13 2 |
| 21. | 0621613 | 1 | SKÅRFORMER SCHWADFORMER | | SWATH FORMER | | |
| 22. | 0621620 | 4 | BLADFJEDER BLÄTTFEDER | | PLATE SPRING | | |
| 23. | 0621640 | 1 | LISTE LEISTE | | RAIL | | |
| 39. | 0427991 | 1 | JUSTERBAR L-FORSKRUNING EINSTELLBARE L-VERSCHRAUBUNG | | ADJUSTABLE L-BOLTING | | |
| 40. | 1165-0278 | 2 | KABELBINDER 4,8-360 KABELHALTEBAENDER 4,8-360 | | CABLE TIES 4,8-360 | | |
| 50. | 4500-0085 | 1 | EKSTRA SKÅRDUG 2. SCHWADTUCH | | 2. WINDROW CLOTH | | |

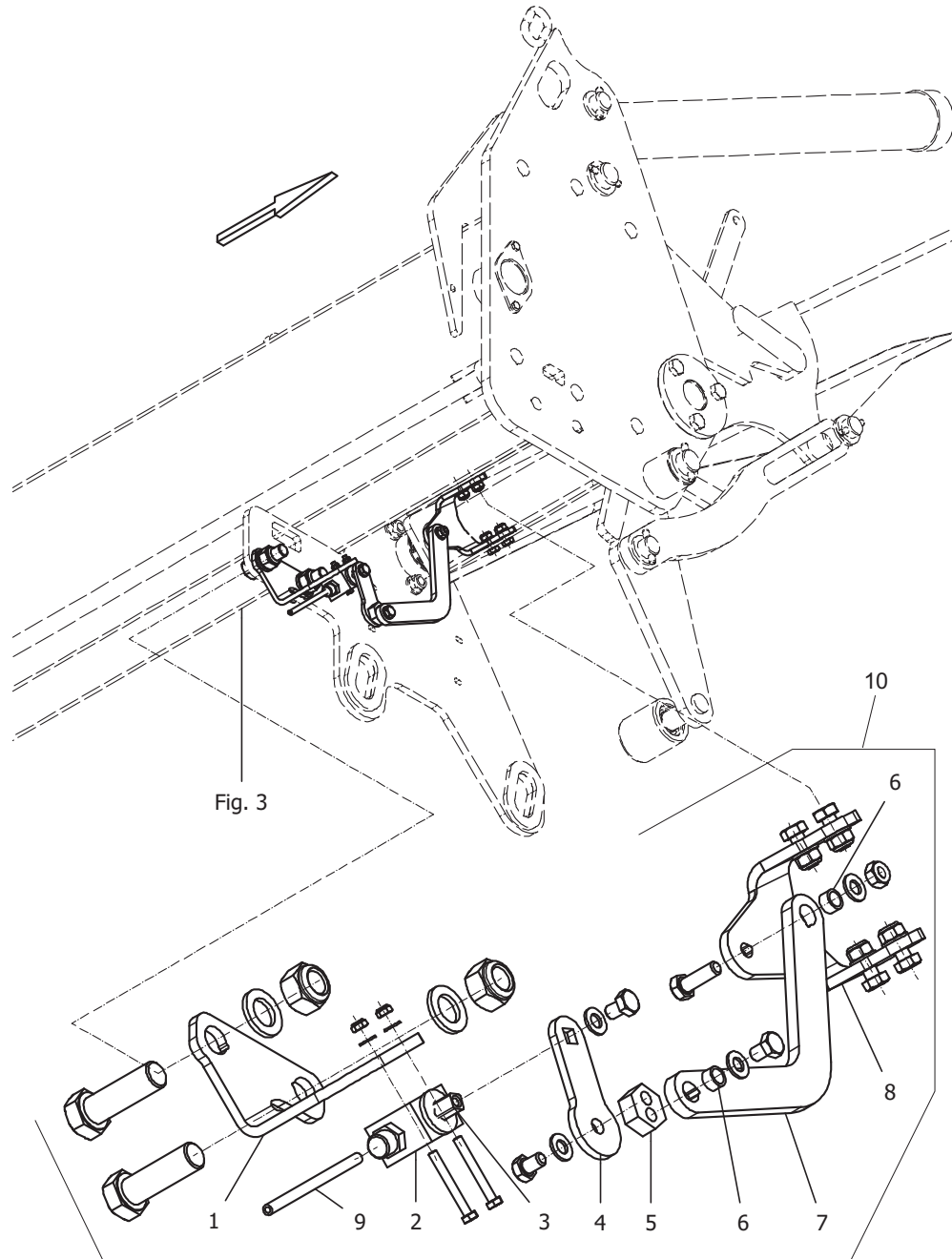
Fig. 81

TILBEHØR - ZUBEHÖR - ACCESSORIES

R-0016/1 R-1610-S

FIG. 81.
TILBEHØR, ZUBEHÖR, ACCESSORIES

>=6850101601



| POS. | VARENUMMER | ANTAL | BENÆVNELSE | BEZEICHNUNG | DESIGNATION | HERTIL, DAZU, TO THIS, A CECI | |
|------|------------|-------|---|-------------|----------------------|----------------------------------|---|
| 1. | 2520-003X | 1 | VENTILHOLDER | | VALVE FASTENER | 1213-5522 | 2 |
| | | | VENTILHALTER | | | 1220-5321 | 2 |
| | | | | | | 1241-4507 | 2 |
| 2. | 1628100 | 1 | KUGLEHANE (2/2 VEJS) | | BALL VALVE (2/2 WAY) | 1214-1121 | 2 |
| | | | KUGELHAHN M.RV (2/2-WEGE) | | | 1220-1322 | 2 |
| | | | | | | 1241-1105 | 2 |
| 3. | 0434031 | 1 | VINKEL WINKEL STUTZEN | | ELBOW SOCKET | | |
| 4. | 1628000 | 1 | GREB | | LEVER | 1213-2124 | 2 |
| | | | HEBEL | | | 1241-1202 | 2 |
| 5. | 1628020 | 1 | SEKSKANT SECHSKANT | | HEXAGON | | |
| 6. | 1628010 | 2 | BØSNING HUELSE | | BUSH | | |
| 7. | 2520-002X | 1 | STIVER | | CROSS TIE | 1213-2222 | 1 |
| | | | STREBE | | | 1213-2223 | 1 |
| | | | | | | 1220-2122 | 1 |
| | | | | | | 1241-1202 | 2 |
| 8. | 2520-004X | 1 | HOLDER | | SUPPORT | 1213-2222 | 4 |
| | | | HALTER | | | 1220-2122 | 4 |
| | | | | | | 1241-1202 | 4 |
| 9. | 0477160 | 1 | SLANGEHOLDER 6X550 SCHLAUCHLEITUNG 6X550 | | HOSE CLAMP | | |
| 10. | 4520-0001 | 1 | STYRING FOLGESTEUERUNG | | STEERING | | |

Fig. 82

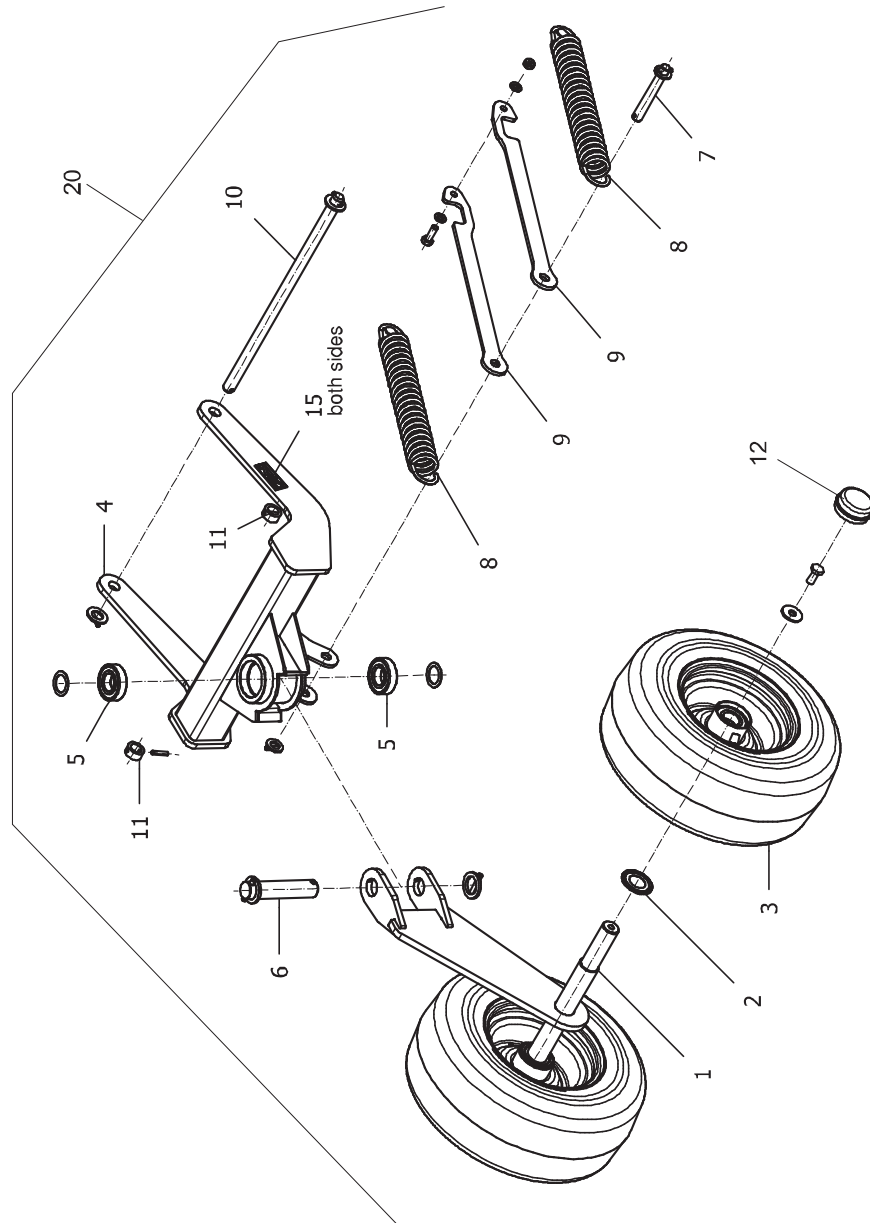
TILBEHØR - ZUBEHÖR - ACCESSORIES

R-0016/1 R-1610-S

FIG. 82.
TILBEHØR, ZUBEHÖR, ACCESSORIES

>=6850101601

HERTIL, DAZU,
TO THIS, A CECI



| POS. | VARENUMMER | ANTAL | BENÆVNELSE | BEZEICHNUNG | DESIGNATION | | |
|------|------------|-------|--|-------------|-----------------------------|-------------------------------------|-------------|
| 1. | 3530-056X | 1 | HJULAKSEL RAD ACHSSCHENKEL | | WHEEL STEERING KNUCKLES | | |
| 2. | 1413200 | 2 | TÆTNINGSRING NILOSRING | | NILOSRING | | |
| 3. | 2520-011X | 2 | STØTTEHJUL 16X6,5 (10PR) STÜTZRAD 16X6,5 (10PR) | | SUPPORT WHEEL 16X6,5 (10PR) | 1213-4224 1241-3509 | 1 1 |
| 4. | 3520-142X | 1 | HJULHOLDER ZUSATZRAD HALTER | | AUXILIARY WHEEL HOLDER | | |
| 5. | 1331-3303 | 2 | KUGLELEJE 6206 2RS KUGELLAGER 6206 2RS | | BALL BEARING 6206 2RS | 1241-7907 | 1 |
| 6. | 2530-139X | 1 | BOLT BOLZEN | | BOLT | 1241-7701 1251-5306 | 2 2 |
| 7. | 2530-305X | 1 | BOLT BOLZEN | | BOLT | 1241-4502 1251-4203 | 2 2 |
| 8. | 0689550 | 2 | TRÆK FJEDER ZUGFEDER | | TENSION SPRING | | |
| 9. | 2520-226X | 2 | STØTTESTANG STREBE | | STRUT | 1213-3322 1220-3321 1241-2401 | 1 1 1 |
| 10. | 2520-118X | 1 | BOLT BOLZEN | | BOLT | 1241-5504 1251-4203 | 2 2 |
| 11. | 2520-232X | 2 | BUSH BUCHSE | | BUSH | 1251-4203 | 1 |
| 12. | 2520-117X | 2 | ENDESTYKKE ABSCHLUSSKAPPE | | END CAP | | |
| 15. | PR80-0858 | 2 | TRANSFER KLEMNINGSFARE AUFKLEBER QUETSCHGEFAHR FINGER | | STICKER | | |
| 20. | 4500-0077 | 1 | STØTTEHJUL STÜTZRAD | | SUPPORT WHEEL | | |

Valid from: | Gültig ab:
Valable à partir de: | Gyldig fra:
30. 01. 2012

Serial No.: | Maschinen Nr.:
No. de serie: | Fabrikationsnr.:
6850101601

PR60-304x 02 R 1610 S - 22.05.13