

Z 455 Hydro

Zettwender / Tedder / Faneur



Ersatzteilliste

Spare parts list

Liste de pièces de rechange

Gültig ab: / Valid from: / Valable à partir de:
P1400_09RE01-DE-EN-FR.pdf

ab Maschinen Nr.: / Serial No.: / No. de serie:

-

Ausgabe: / Edition: / Edition:

2009/01

1641900-DE-EN-FR

VP 1608530

P 1400-ET

Notieren Sie die Fabrikationsnummer Ihrer Maschine auf der Innenseite des Umschlages. / Please note the serial number of your machine at the inside of the cover. / Veuillez noter le numero de Votre machine sur la face interne de la couverture.

Bei Ersatzteilbestellungen ist die Fabrikationsnummer Ihrer Maschine unbedingt anzugeben. Das erspart Ihnen Zeit, Geld und Ärger und erleichtert uns die Abfertigung. Tragen Sie die Nummer Ihrer Maschine bitte hier ein:

Nr: _____ Geliefert am _____

Dann haben Sie bei Ersatzteilbestellungen die Nummer immer zur Hand. Die Fabrikationsnummer ist auf dem Fabrikschild eingetragen, siehe Bild.

Always state the serial number and if possible the year of the machine when ordering spare parts whereby you save time and money and facilitates matters for us. Please enter the number of your machine here:

Nr: _____ Delivered on the _____

Appropriate when ordering parts. The serial number is located as shown in the figure.

Bestiller De reservedele så opgiv venligst maskines fabrikationsnummer og eventuelt købsår. Det sparer Dem tid, penge og ærgelser og os unødigt besvær. De kan notere nummeret på Deres maskine her:

Nr: _____ Livered den _____

Så har De det ved hånden, når De eventuelt skal bestille reservedele. Fabrikationsnummeret findes indhugget i rammen, som vist på figuren.

Lorsque vous commandez des pièces de rechange, indiquez toujours le numéro de série de votre machine et si possible son année de fabrication. Vous éviterez des pertes de temps et vous nous faciliterez le travail. Prière de noter ici le numéro de série de votre machine:

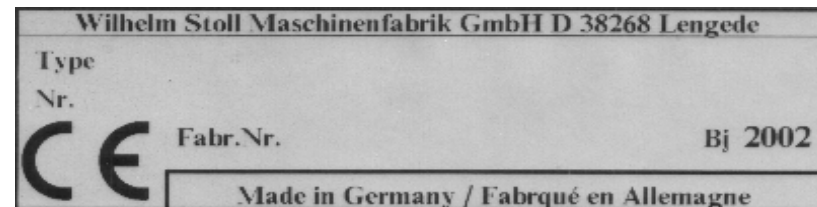
Numéro: _____ Livrée le _____

Ceci vous sera utile lorsque vous commanderez des pièces. Le Numéro de série est place dans le cadre indiqué sur la figure.

Gelieve bij een bestelling van onderdelen altijd het serienummer van de machine te vermelden. Dit voorkomt extra kosten, ergernis en tijdverlies en bespoedigt de aflevering. Noteer hieronder het serienummer van uw machine:

Nr: _____ Leverdatum _____

Op deze wijze heeft u voor de bestelling van onderdelen het nummer steeds bij de hand. Het serienummer is in het typeplaatje op de machine gegraveerd.



Ersatzteilliste Z 455 HYDRO

Bei der Bestellung von Kleinteilen (Schrauben, Muttern usw.) bitten wir um Angabe der Bezeichnung und der Abmessung.

Bei Bestellung bitten wir um Angabe:

1. Bestell-Nr. (7-stellige Nr.)
2. Benennung
3. Stückzahl



Ersatzteile müssen mindestens den vom Gerätehersteller festgelegten technischen Anforderungen entsprechen! Dies ist zum Beispiel durch Original-Ersatzteile gegeben!

Inhaltsverzeichnis:

| | |
|---------------------------|----|
| Dreipunktbock, Ausleger | 1 |
| Grundgerät, Zinkenträger | 5 |
| Schutzbügel, Außenarm | 15 |
| Schutzbügel, Warntafel | 19 |
| Schwadgetriebe | 21 |
| Schwenkstoßdämpfer | 23 |
| Wickelschutz | 25 |
| Aufklebersatz, Sicherheit | |

Spare part list Z 455 HYDRO

When ordering hardware (bolts, nuts etc.) please quote the designation and dimensions.

When ordering parts please quote:

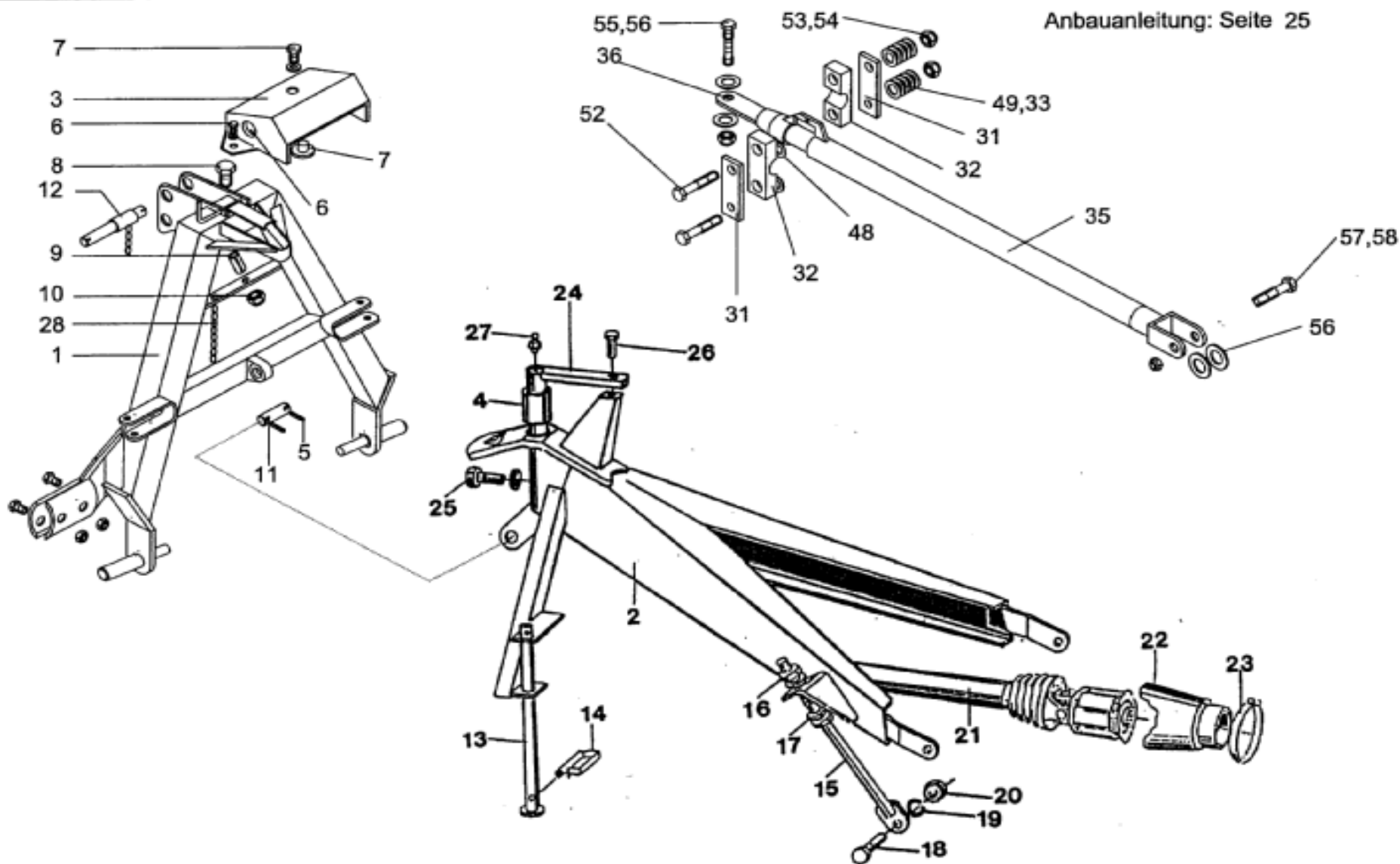
1. the 7-digit part no.
2. the designation of the part
3. the quantity required

Liste de pièces de rechange Z455 HYDRO

Pour les petites pièces de détail (vis, boulons, etc.) indiquer mesures et normes.

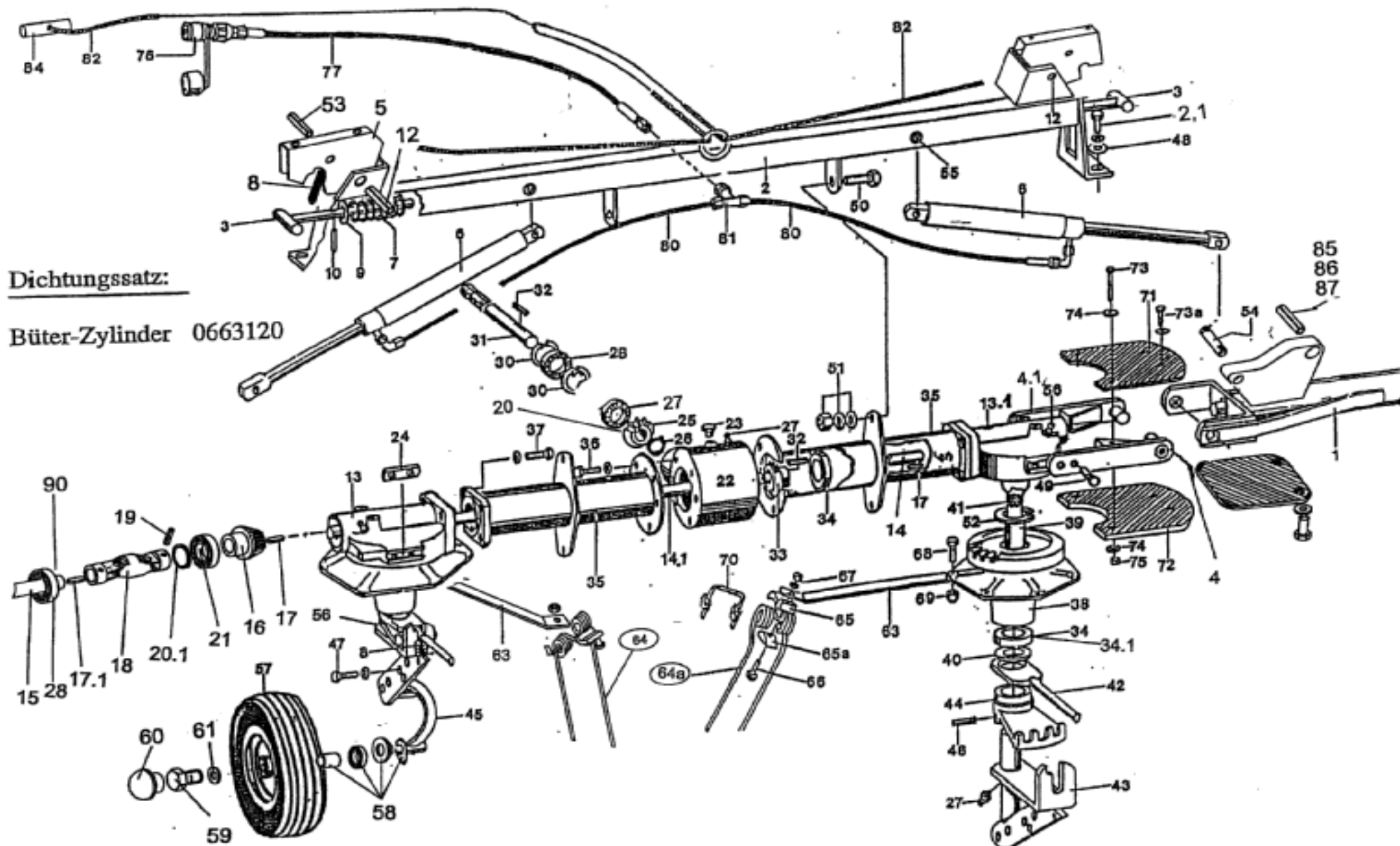
1. No de commande (7 chiffres)
2. Nom de la pièces
3. Nombre

Anbauanleitung: Seite 25



| Dreipunktanbaubock, Ausleger / 3-pt headstock, Arm / Cadre d'attelage 3 pt, Bras | | | | | | | | | | P 1400 |
|--|-------------|--------------------------|-----------------------|-------------------------|------------------|-------|--------|-----------|--|--------|
| Pos. | Bestell-Nr. | Benennung | Description | Désignation | SIZE/MASS | Stück | Farbe: | Kommentar | | |
| 1 | 0 66 12 52 | DREIPUNKTANBAUBOCK GSW | 3-PT HEADSTOCK WELDED | CADRE D'ATTELAGE 3PT S. | 98.89-02B | 1 | grün | | | |
| | 0 66 12 54 | DREIPUNKTANBAUBOCK GSW | 3-PT HEADSTOCK WELDED | CADRE D'ATTELAGE 3PT S. | 98.89-02B RJ | 1 | rot | | | |
| 2 | 1 60 87 40 | AUSLEGER GSW | ARM WELDED | BRAS SOUDE | 98.78-04 | 1 | grün | | | |
| | 1 60 87 41 | AUSLEGER GSW | ARM WELDED | BRAS SOUDE | 98.78-04 RJ | 1 | rot | | | |
| 3 | 1 60 14 70 | ABDECKUNG | COVER WELDED | COUVERCLE SOUDE | 98.89-00.62 | 1 | Grau | | | |
| 4 | 0 63 40 70 | ROLLE | ROLLER | GALET | 99.46-01-00.7 | 1 | grün | | | |
| | 0 63 40 72 | ROLLE | ROLLER | GALET | 99.46-01-00.7 RJ | 1 | rot | | | |
| 5 | 0 01 27 30 | SPANNSTIFT 8x40 | ROLL PIN | GOUPILLE SERRAGE | | 2 | | | | |
| | 0 65 74 20 | SCHEIBE | WASHER | RONDELLE | 99.70-00.35 | 2 | | | | |
| 6 | 0 49 50 20 | STECKERHALTER | PLUG HOLDER | APPUI DE FICHE | | 1 | | | | |
| | 0 01 11 10 | 6KTSCH M8x25 | HEX BOLT | VIS HEXAG | | 5 | | | | |
| | 0 20 06 00 | SGMU NM8 | SLF LOCK. NUT | ECROU AUTOFR. | | 2 | | | | |
| | 0 20 13 90 | SCHEIBE 9 | WASHER | RONDELLE | | 9 | | | | |
| 7 | 0 01 48 50 | O-RING | O-RING | JOINT TORIQUE | | 3 | | | | |
| | 0 40 34 10 | 6KTSCH M16x12 | HEX BOLT | VIS HEXAG. | | 1 | | | | |
| | 0 41 83 90 | SCHEIBE 6,4 | WASHER | RONDELLE | | 1 | | | | |
| | 0 42 48 80 | SCHEIBE A 13 | WASHER | RONDELLE | | 1 | | | | |
| | 1 40 11 80 | HAFTMAGNETSCHEIBE H50 | MAGNETIC WASHER | RONDELLE AIMANT | | 1 | | | | |
| 8 | 0 40 14 10 | 6KTSCH M18x120 | HEX BOLT | VIS HEXAG. | | 1 | | | | |
| 9 | 0 63 75 90 | SPANNSTIFT | ROLL PIN | GOUPILLE SERRAGE | 98.94-00.56 | 1 | grün | | | |
| | 0 63 75 91 | SPANNSTIFT | ROLL PIN | GOUPILLE SERRAGE | 98.94-00.56 RJ | 1 | rot | | | |
| 10 | 0 45 73 10 | SGMU NM18 | SLF LOCK. NUT | ECROU AUTOFR. | | 1 | | | | |
| 11 | 0 66 51 20 | BOLZEN | PIN | AXE | 98.89-00.25 | 1 | | | | |
| 12 | 0 12 73 30 | STECKBOLZEN KPL | PIN | AXE | 90.16-03 | 2 | | | | |
| 13 | 0 62 25 10 | STÜTZE GSW. | SUPPORT | SUPPORT | 99.46-03 | 1 | grün | | | |
| | 0 62 25 12 | STÜTZE GSW. | SUPPORT | SUPPORT | 99.46-03 RJ | 1 | rot | | | |
| | 0 01 31 30 | SPANNSTIFT 6x60 | ROLL PIN | GOUPILLE SERRAGE | | 1 | | | | |
| 14 | 0 62 54 50 | FEDERSTECKBOLZEN | SAFETY PIN | BROCHE D. VERROUILLA. | 99.46-05-00.5 | 1 | | | | |
| 15 | 0 61 22 90 | GEWINDESTANGE GSW | THREADED ROD | TIGE FILETEE | 98.61-02 | 1 | | | | |
| 16 | 0 40 57 00 | 6KTMU M20 | HEX NUT | ECROU HEXAG. | | 4 | | | | |
| 17 | 0 02 42 00 | SCHEIBE 21 | WASHER | RONDELLE | | 4 | | | | |
| 18 | 0 01 13 00 | 6KTSCH M16x45 | HEX BOLT | VIS HEXAG. | | 2 | | | | |
| 20 | 0 01 16 60 | 6KTMU M16 | HEX NUT | ECROU HEXAG. | | 2 | | | | |
| 21 | 0 61 48 82 | GELENKWELLE | PTO DRIVE SHAFT | ARBRE CARDANS | 98.42-10B | 1 | | | | |
| | 0 61 48 80 | GELENKWELLE | PTO DRIVE SHAFT | ARBRE CARDANS | 98.42-10 | 1 | | | | |
| 22 | 0 45 96 30 | SCHUTZSTOPFEN GPN | GUARD PLUG | BOUCHON DE PROTECTION | | 1 | | | | |
| 23 | 0 40 71 90 | SCHLAUCHSCHELLE AS 70-90 | CLAMP | COLLIER DE SERRAGE | | 1 | | | | |
| 24 | 0 63 40 21 | BOLZEN GSW. | PIN | AXE | 99.46-01-08A | 1 | grün | | | |
| | 0 63 40 23 | BOLZEN GSW. | PIN | AXE | 99.46-01-08A RJ | 1 | rot | | | |
| 25 | 0 46 49 10 | 6KTSCH M10x25 VP | HEX BOLT | VIS HEXAG. | | 1 | | | | |
| | 0 01 20 70 | SCHEIBE 11 | WASHER | RONDELLE | | 1 | | | | |

| Dreipunktanbaubock, Ausleger / 3-pt headstock, Arm / Cadre d'attelage 3 pt, Bras | | | | | | | | P 1400 |
|---|--------------------|----------------------------|-----------------------|---------------------|------------------|--------------|---------------|------------------|
| Pos. | Bestell-Nr. | Benennung | Description | Désignation | SIZE/MASS | Stück | Farbe: | Kommentar |
| 26 | 1 40 36 40 | 6KTSCH M12x25 VP | HEX BOLT | VIS HEXAG. | | 1 | | |
| | 0 01 19 80 | SCHEIBE 13 | WASHER | RONDELLE | | 1 | | |
| 27 | 0 01 51 70 | SCHMIERNIPPEL AM8x1 | LUBR. NIPPLE | GRAISSEUR | | 1 | | |
| 28 | 0 51 74 40 | RUNDSTAHLKETTE | CHAIN | CHAIN | 99.03-08 | 1 | | |
| | | | | | | | | |
| | 1 60 05 50 | STOSSDAEMPFER KPL | SHOCK ABSORBER | AMORTISSEUR | 98.91-61 | 2 | | |
| 31 | 1 60 20 20 | LASCHE | STRAP-JOINT | COUVRE-JOINT | 98.91-00.1 | 2 | | |
| 32 | 1 60 20 60 | SHELLE | CLIP | ETRIER | 98.91-00.2 | 2 | | |
| 33 | 1 60 20 50 | HÜELSE | BUSHING | DOUILLE | 98.91-00.3 | 2 | | |
| 35 | 1 60 20 70 | AUSSENROHR GSW | OUTER PIPE | TUYAU EXTERIEUR | 98.91-61-01 | 1 | | |
| 36 | 1 60 20 80 | INNENROHR GSW | INNER PIPE | TUYAU INTERIEUR | 98.91-61-02 | 1 | | |
| 48 | 1 41 75 80 | TELLERFEDER 18,8X10,2X0,25 | DISC SPRING | RESSORT A DISQUE | | 20 | | |
| 49 | 1 41 79 60 | DRUCKFEDER | PRESSURE SPRING | RESSORT DE PRESSION | | 2 | | |
| 52 | 0 41 68 80 | 6KTSCH M 10X20 | HEX BOLT | VIS HEXAG | | 2 | | |
| 53 | 0 01 41 10 | SCHEIBE A 10,5 | WASHER | RONDELLE | | 2 | | |
| 54 | 0 01 19 40 | SGMU N M 10 | SLF LOCK. NUT | ECROU AUTOFR. | | 2 | | |
| 55 | 0 01 00 50 | 6KTSCH M12 x 50 | HEX BOLT | VIS HEXAG | | 2 | | |
| | 0 20 06 10 | SGMU NM 12 | SLF LOCK. NUT | ECROU AUTOFR. | | 2 | | |
| 56 | 1 60 20 40 | SCHEIBE | WASHER | RONDELLE | 98.91-61-00.7 | 8 | | |
| 58 | 0 01 01 80 | 6KTSCH M16x60 | HEX BOLT | VIS HEXAG | | 2 | | |
| | 0 41 22 00 | SGMU NM 16 | SLF LOCK. NUT | ECROU AUTOFR. | | 2 | | |
| | | | | | | | | |
| 76 | 1 60 85 20 | AUFKLEBERSATZ Z 455 HYD | STICKY LABEL SET | ETIQUETTE À COLLER | 98.78-50 | | | |
| | 1 60 88 10 | AUFKLEBER Z 455 HYD | DECALCOMANIA | DECALCOMANIE | 98.78-50-00.1 | 1 | | |
| | 1 60 88 20 | AUFKLEBER Z 455 HYD | DECALCOMANIA | DECALCOMANIE | 98.78-50-00.2 | 1 | | |
| | 0 29 99 70 | AUFKLEBER | DECALCOMANIA | DECALCOMANIE | 55.00-00.4 | 1 | | |
| | 0 62 95 40 | AUFKLEBER - SICHERHEIT | DECALCOMANIA | DECALCOMANIE | 99:45-15 | 1 | | |
| | 0 65 33 90 | AUFKLEBER- GEWINDESTANGE | DECALCOMANIA | DECALCOMANIE | 98:77-00.14 | 1 | | |
| | | | | | | | | |
| | | | | | | | | |
| | | | | | | | | |
| | | | | | | | | |
| | | | | | | | | |
| | | | | | | | | |
| | | | | | | | | |
| | | | | | | | | |
| | | | | | | | | |
| | | | | | | | | |
| | | | | | | | | |
| | | | | | | | | |
| | | | | | | | | |
| | | | | | | | | |
| | | | | | | | | |



Dichtungssatz:

Büter-Zylinder 0663120

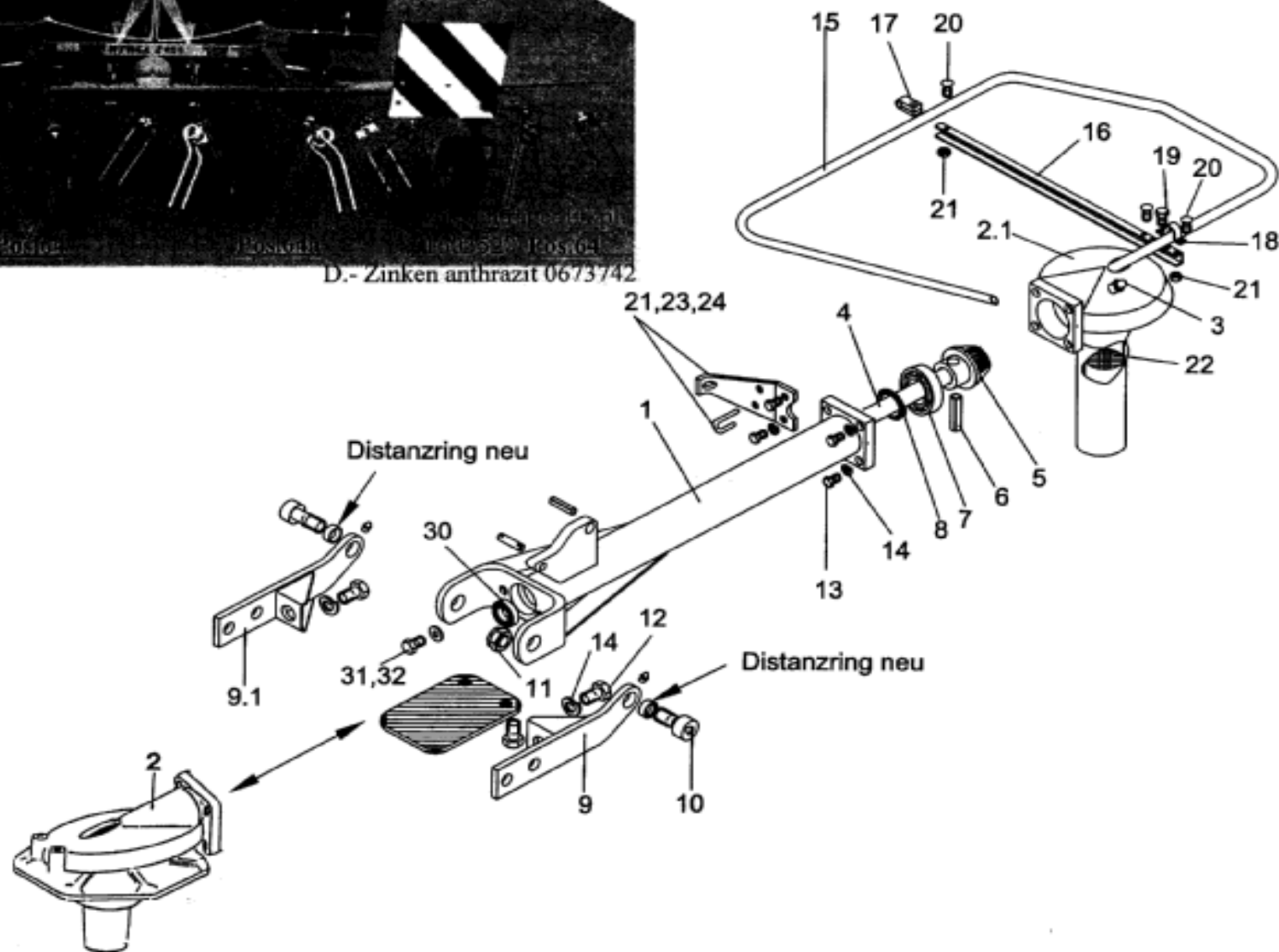
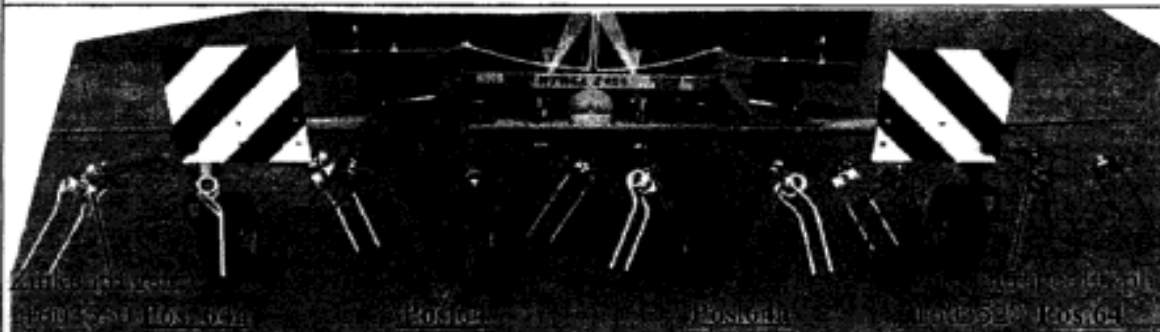
| Grundgerät / Basic implement / Outil de Base | | | | | | | | P 1400 | |
|--|-------------|-------------------------|-----------------------|------------------------|-------------------|-------|--------|-----------|--|
| Pos. | Bestell-Nr. | Benennung | Description | Désignation | SIZE/MASS | Stück | Farbe: | Kommentar | |
| 1 | 1 60 87 10 | AUSSENTRÄGER GSW | OUTER SUPPORT | SUPPORT EXTERIEUR | 98.78-01 | 2 | grün | | |
| | 1 60 87 11 | AUSSENTRÄGER GSW | OUTER SUPPORT | SUPPORT EXTERIEUR | 98.78-01 RJ | 2 | rot | | |
| 2 | 1 60 87 20 | DREIPUNKTAUFNAHME GSW | 3-PT MOUNTING BRACKET | PATTE DE FIXATION 3-PT | 98.78-02 | 1 | grün | | |
| | 1 60 87 21 | DREIPUNKTAUFNAHME GSW | 3-PT MOUNTING BRACKET | PATTE DE FIXATION 3-PT | 98.78-02 RJ | 1 | rot | | |
| 2.1 | 0 43 80 00 | 6KTSCH M12x30 VP | HEX BOLT | VIS HEXAG | | 2 | | | |
| 3 | 0 62 51 30 | DRUCKSTREBE | PRESSURE SUPPORT | SUPPORT PRESSION | 98.82-01-03 | 2 | grün | | |
| | 0 62 51 31 | DRUCKSTREBE | PRESSURE SUPPORT | SUPPORT PRESSION | 98.82-01-03 RJ | 2 | rot | | |
| 4 | 1 60 16 10 | LASCHE RE/HI GSW. | STRAP-JOINT | COUVRE JOINT | 98.85-01-20 | 2 | grün | | |
| | 1 60 16 11 | LASCHE RE/HI GSW. | STRAP-JOINT | COUVRE JOINT | 98.85-01-20 RJ | 2 | rot | | |
| 4.1 | 1 60 16 00 | LASCHE LI/HI GSW. | STRAP-JOINT | COUVRE JOINT | 98.85-01-19 | 2 | grün | | |
| | 1 60 16 01 | LASCHE LI/HI GSW. | STRAP-JOINT | COUVRE JOINT | 98.85-01-19 RJ | 2 | rot | | |
| | 0 01 51 70 | SCHMIERNIPPEL AM 8x1 | LUBR.NIPPLE | GRAISSEUR | | 4 | | | |
| 5 | 1 60 11 00 | VERRIEGELUNG | BOLTING | VERROUILLAGE | 98.84-01-00.5 | 2 | grün | | |
| | 1 60 11 01 | VERRIEGELUNG | BOLTING | VERROUILLAGE | 98.84-01-00.5 RJ | 2 | rot | | |
| 6 | 0 62 52 20 | HUBZYLINDER KPL | CYLINDER | CYLINDRE | 98.82-01-06 | 2 | Grau | | |
| 7 | 0 46 69 80 | DRUCKFEDER GUKU | PRESSURE SPRING | RESSORT DE PRESSION | | 2 | | | |
| 8 | 0 46 69 60 | ZUGFEDER | TENSION SPRING | RESSORT TENDEUR | | 6 | | | |
| 9 | 0 20 68 20 | SCHEIBE 19 | WASHER | RONDELLE | | 2 | | | |
| 10 | 0 01 27 30 | SPANNSTIFT 8x40 | ROLL PIN | GOUPILLE SERRAGE | | 2 | | | |
| 11 | 0 01 27 10 | SPANNSTIFT 8x32 | ROLL PIN | GOUPILLE SERRAGE | | 2 | | | |
| 12 | 0 01 29 40 | SPANNSTIFT 13x55 | ROLL PIN | GOUPILLE SERRAGE | | 2 | | | |
| | 0 20 02 90 | SPANNSTIFT 8x55 | ROLL PIN | GOUPILLE SERRAGE | | 2 | | | |
| | 0 20 66 80 | SPANNSTIFT 5x55 | ROLL PIN | GOUPILLE SERRAGE | | 2 | | | |
| 13 | 0 62 78 01 | GETRIEBEGEHÄUSE LI | GEAR BOX | BOITE DE VITESSES | 98.85-01-00.1A | 1 | grün | | |
| | 1 64 02 70 | GETRIEBEGEHÄUSE LI | GEAR BOX | BOITE DE VITESSES | 98.85-01-00.1A RJ | 1 | rot | | |
| 13,1 | 0 62 78 02 | GETRIEBEGEHÄUSE RE | GEAR BOX | BOITE DE VITESSES | 98.85-01-00.1B | 1 | grün | | |
| | 1 64 03 10 | GETRIEBEGEHÄUSE RE | GEAR BOX | BOITE DE VITESSES | 98.85-01-00.1B RJ | 1 | rot | | |
| | 1 42 02 20 | SCHMIERNIPPEL H2SFG 8x1 | LUBR.NIPPLE | GRAISSEUR | | 2 | | | |
| 14 | 1 60 87 50 | WELLE IN. KPL. | SHAFT | ARBRE | 98.78-05 | 1 | | | |
| 14.1 | 1 40 89 90 | RIKGL 6208 2 RS | GRV BALL BEAR | ROUL.RAIN.BILL. | | 1 | | | |
| | 0 07 05 40 | SICHERUNGSRING 40x1,75 | CIRCLIP | CIRCLIP | | 2 | | | |
| | 0 43 99 50 | PASSSCHEIBE 40x50x0,3 | SHIM | CALE | | 2 | | | |
| | 0 01 45 80 | PASSSCHEIBE 40x50x0,5 | SHIM | CALE | | 2 | | | |
| 15 | 1 60 87 60 | WELLE AU | SHAFT | ARBRE | 98.78-00.2 | 2 | | | |
| 16 | 0 62 78 51 | KEGELRAD Z=16 | BEVEL GEAR | PIGNON CONIQUE | 98.85-01-00.6A | 2 | | | |
| | 0 01 45 70 | PASSSCHEIBE 30x42x0,3 | SHIM | CALE | | 2 | | | |
| | 0 01 45 80 | PASSSCHEIBE 30x42x0,5 | SHIM | CALE | | 2 | | | |
| | 0 41 24 10 | PASSSCHEIBE 30x42x1,0 | SHIM | CALE | | 2 | | | |
| 17 | 0 46 70 00 | PASSFEDER A 8x5x28 | FLAT KEY | CLAV. NOYEE | | 2 | | | |
| 17.1 | 0 01 36 40 | PASSFEDER A 8x7x32 | FLAT KEY | CLAV. NOYEE | | 2 | | | |

| Grundgerät / Basic implement / Outil de Base | | | | | | | | P 1400 |
|--|-------------|-----------------------|------------------------|-----------------------------|------------------|-------|--------|-----------|
| Pos. | Bestell-Nr. | Benennung | Description | Désignation | SIZE/MASS | Stück | Farbe: | Kommentar |
| 18 | 0 64 03 40 | DOPPELKREUZGELENK KPL | UNIVERSAL JOINT | ARTICULATION A CARDAN | 98.90-22 | 2 | | |
| | 0 41 24 10 | PASSSCHEIBE 30x42x1,0 | SHIM | CALE | | 2 | | |
| 19 | 0 01 29 30 | SPANNSTIFT 13x50 | ROLL PIN | GOUPILLE SERRAGE | | 2 | | |
| | 0 20 02 80 | SPANNSTIFT 8x50 | ROLL PIN | GOUPILLE SERRAGE | | 2 | | |
| | 0 20 74 00 | SPANNSTIFT 5x50 | ROLL PIN | GOUPILLE SERRAGE | | 2 | | |
| 20 | 0 06 68 60 | SICHERUNGSRING 75x2,5 | CIRCLIP | CIRCLIP | | 2 | | |
| | 0 01 45 70 | PASSSCHEIBE 30x42x0,3 | SHIM | CALE | | 2 | | |
| | 0 01 45 80 | PASSSCHEIBE 30x42x0,5 | SHIM | CALE | | 2 | | |
| | 0 01 24 10 | PASSSCHEIBE 30x42x1,0 | SHIM | CALE | | 2 | | |
| 21 | 0 46 69 40 | RIKGL 6009 2 RS | GRV BALL BEAR | ROUL.RAIN.BILL. | | 2 | | |
| | 0 41 52 00 | PASSSCHEIBE 60x75x0,2 | SHIM | CALE | | 2 | | |
| | 0 41 99 00 | PASSSCHEIBE 60x75x0,3 | SHIM | CALE | | 2 | | |
| | 0 45 10 00 | PASSSCHEIBE 60x75x0,5 | SHIM | CALE | | 2 | | |
| | 0 41 99 10 | PASSSCHEIBE 60x75x1,0 | SHIM | CALE | | 2 | | |
| 22 | 1 60 90 20 | GETRIEBEGEHÄUSE | GEAR BOX | BOITE DE VITESSES | 98.78-00.1 | 1 | grün | |
| | 1 60 90 21 | GETRIEBEGEHÄUSE | GEAR BOX | BOITE DE VITESSES | 98.78-00.1 RJ | 1 | rot | |
| 23 | 0 44 93 50 | SCHRAUBSTOPFEN | PLUG | BOUCHON | | 1 | | |
| | 0 01 38 90 | DICHTRING | PACKING RING | RONDELLE DE JOINT | | 1 | | |
| | 0 44 99 10 | ENTLÜFTUNGSVENTIL | RELIEF VALVE | SOUPAPE D'AERAGE | | 1 | | |
| | 0 10 98 00 | GETRIEBEFLISSFETT | GEAR SEMI-FLUID GREASE | GRAISSE DE VITESSES | | 0,6 | | |
| 24 | 0 62 50 00 | PASSFEDER | FLAT KEY | CLAV. NOYEE | 98.82-01-00.6 | 4 | | |
| 25 | 0 61 64 60 | KEGELRAD | BEVEL GEAR | PIGNON CONIQUE | 98.62-01-00.2 | 1 | | |
| 26 | 0 40 03 30 | SICHERUNGSRING 30x1,5 | CIRCLIP | CIRCLIP | | 1 | | |
| 27 | 0 40 65 90 | SCHMIERNIPPEL SFG 8x1 | LUBR.NIPPLE | GRAISSEUR | | 4 | | |
| | 0 64 57 20 | SCHMIERSCHLAUCH | LUBRICATING TUBE | TUYAU DE GRAISSAGE | | 4 | | |
| 28 | 0 42 20 50 | RIKGL 6206 2RS | GRV BALL BEAR | ROUL.RAIN.BILL. | | 2 | | |
| 29 | 0 60 83 00 | DISTANZBUCHSE | DISTANCE BUSHING | DOUILLE DE DISTANCE | 98.60-01-00.6 | 1 | | |
| 30 | 0 00 67 90 | SICHERUNGSRING 62x2 | CIRCLIP | CIRCLIP | | 2 | | |
| 31 | 0 62 37 70 | ANTRIEBSWELLE | DRIVE SHAFT | ARBRE D'ENTRAINEME. | 98.75-01-00.6 | 1 | | |
| 32 | 0 43 78 80 | PASFED A8x7x36 | FLAT KEY | CLAV. NOYEE | | 2 | | |
| 33 | 0 62 78 20 | KEGELRAD MI Z=21 | BEVEL GEAR | PIGNON CONIQUE | 98.85-01-00.3 | 1 | | |
| 34 | 0 46 87 40 | RIKGL 6010 Z 2RS | GRV BALL BEAR | ROUL RAIN BILL | | 9 | | |
| | 0 01 46 10 | PASSSCHEIBE 50x62x0,3 | SHIM | CALE | | 2 | | |
| | 0 01 46 30 | PASSSCHEIBE 50x62x0,5 | SHIM | CALE | | 2 | | |
| | 0 01 46 00 | PASSSCHEIBE 50x62x1,0 | SHIM | CALE | | 2 | | |
| 35 | 0 62 40 20 | GETRIEBEARM GSW | GEAR ARM | BRAS D. L. BOITE D. VISTES. | 98.75-01-02 | 2 | grün | |
| | 0 62 40 21 | GETRIEBEARM GSW | GEAR ARM | BRAS D. L. BOITE D. VISTES. | 98.75-01-02 RJ | 2 | rot | |
| 36 | 0 43 80 00 | 6KTSCH M12x30 | HEX BOLT | VIS HEXAG | | 16 | | |
| 37 | 0 43 80 00 | 6KTSCH M12x30 VP | HEX BOLT | VIS HEXAG | | 8 | | |
| 38 | 0 62 78 10 | TELLERRAD M NABE | CROWN WHEEL W HUB | COURONNE DENTEE A.M. | 98.85-01-00.2 | 4 | grün | |
| | 0 62 78 11 | TELLERRAD M NABE | CROWN WHEEL W HUB | COURONNE DENTEE A.M. | 98.85-01-00.2 RJ | 4 | rot | |

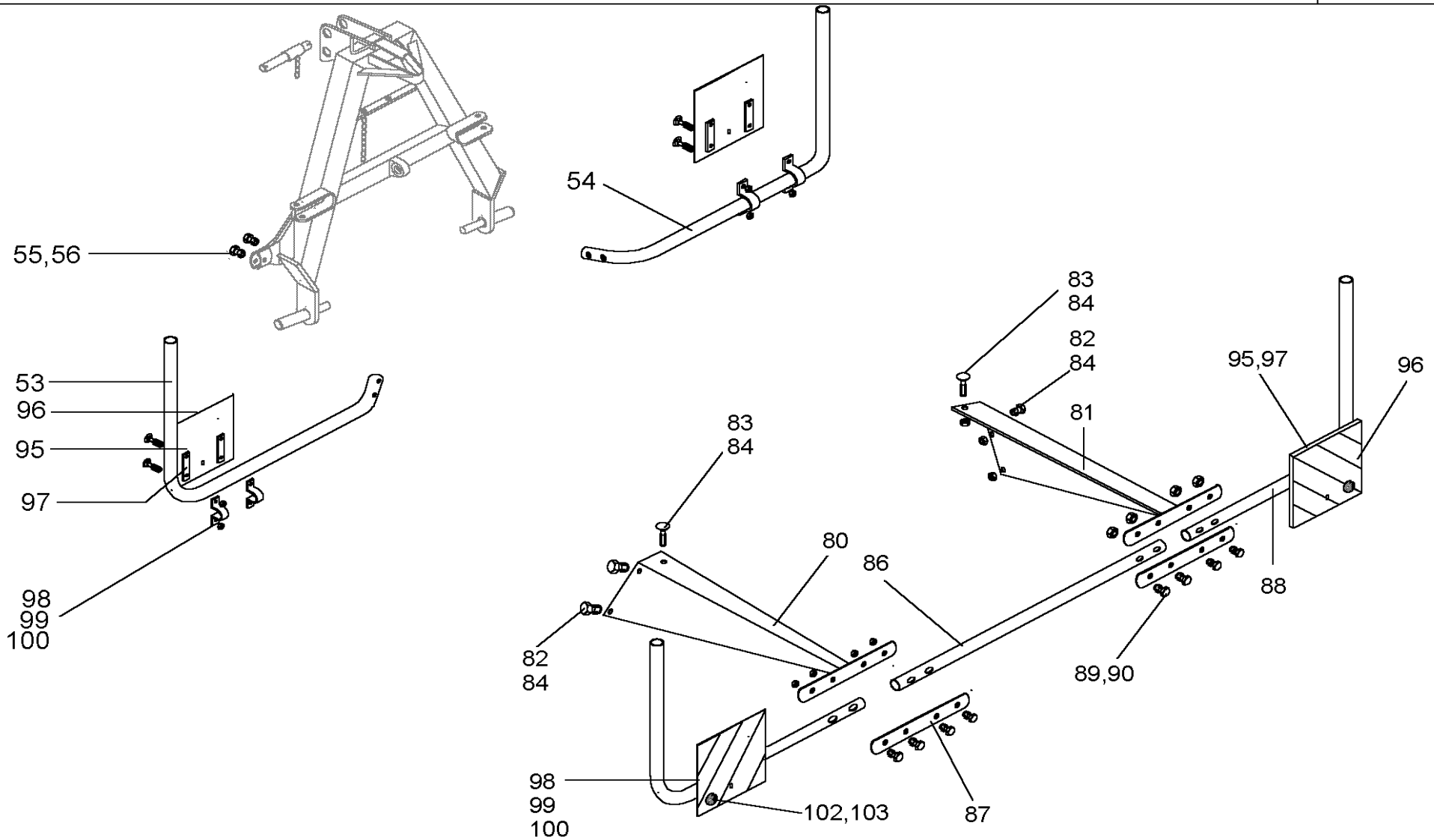
| Grundgerät / Basic implement / Outil de Base | | | | | | | | P 1400 |
|--|-------------|---------------------------|-------------------------|---------------------------|------------------|-------|--------|-----------|
| Pos. | Bestell-Nr. | Benennung | Description | Désignation | SIZE/MASS | Stück | Farbe: | Kommentar |
| 39 | 0 62 47 50 | DISTANZBUCHSE | SPACER | DOUILLE ENTRET. | 98.80-01-00.15 | 4 | | |
| 40 | 0 62 38 60 | SCHEIBE | WASHER | RONDELLE | 98.75-01-00.16 | 4 | | |
| 41 | 0 62 39 20 | STOPFEN | PLUG | BOUCHON | 98.75-01-00.22 | 4 | | |
| 42 | 0 62 41 90 | HEBEL GSW | LEVER WELDED | LEVIER SOUDE | 98.75-01-06 | 4 | grün | |
| | 0 62 41 91 | HEBEL GSW | LEVER WELDED | LEVIER SOUDE | 98.75-01-06 RJ | 4 | rot | |
| 43 | 0 63 37 50 | RADHALTER GSW | WHEEL HOLDER WELDED | SUPPORT ROUE SOUDE | 98.83-01-05 | 4 | grün | |
| | 0 63 37 51 | RADHALTER GSW | WHEEL HOLDER WELDED | SUPPORT ROUE SOUDE | 98.83-01-05 RJ | 4 | rot | |
| 44 | 0 62 37 50 | SEGMENT | SEGMENT | SEGMENT | 98.75-01-00.4 | 4 | grün | |
| | 0 62 37 53 | SEGMENT | SEGMENT | SEGMENT | 98.75-01-00.4 RJ | 4 | rot | |
| 45 | 0 62 41 10 | RADBÜGEL GSW | WHEEL BRACKET | SUPPORT DE ROUE | 98.75-01-04 | 2 | grün | |
| | 0 62 41 11 | RADBÜGEL GSW | WHEEL BRACKET | SUPPORT DE ROUE | 98.75-01-04 RJ | 2 | rot | |
| 46 | 0 09 89 60 | SPANNSTIFT 5x70 | ROLL PIN | GOUPILLE SERRAGE | | 4 | | |
| | 0 01 27 60 | SPANNSTIFT 8x70 | ROLL PIN | GOUPILLE SERRAGE | | 4 | | |
| | 0 01 29 60 | SPANNSTIFT 13x70 | ROLL PIN | GOUPILLE SERRAGE | | 4 | | |
| 47 | 1 40 40 00 | 6KTSCH M12x30 VP ZN | HEX BOLT | VIS HEXAG | | 8 | | |
| 48 | 0 01 19 80 | SCHEIBE 13 | WASHER | RONDELLE | | 4 | | |
| 49 | 0 46 35 60 | 6KTSCH M12x40 VP | HEX BOLT | VIS HEXAG | | 4 | | |
| | 1 40 36 40 | 6KTSCH M12x25 VP | HEX BOLT | VIS HEXAG | | 4 | | |
| 50 | 0 20 23 60 | 6KTSCH M16x55 | HEX BOLT | VIS HEXAG | | 2 | | |
| 51 | 0 01 16 60 | 6KTMU M16 | HEX NUT | ECROU HEXAG | | 2 | | |
| 52 | 0 40 01 70 | SICHERUNGSRING 80x2,5 | CIRCLIP | CIRCLIP | | 4 | | |
| | 0 01 46 10 | PASSSCHEIBE 50x62x0,3 | SHIM | CALE | | 2 | | |
| | 0 01 46 30 | PASSSCHEIBE 50x62x0,5 | SHIM | CALE | | 2 | | |
| | 0 01 46 00 | PASSSCHEIBE 50x62x1,0 | SHIM | CALE | | 2 | | |
| 53 | 0 01 27 30 | SPANNSTIFT 8x40 | ROLL PIN | GOUPILLE SERRAGE | | 2 | | |
| 54 | 0 64 37 00 | BOLZEN | ROLL PIN | GOUPILLE SERRAGE | 99.68-00.30 | 2 | | |
| | 0 01 31 10 | SPANNSTIFT 6x28 | ROLL PIN | GOUPILLE SERRAGE | | 4 | | |
| | 0 42 23 20 | PASSSCHEIBE 16x22x0,5 | SHIM | CALE | | 4 | | |
| 55 | 0 68 75 10 | BOLZEN | ROLL PIN | GOUPILLE SERRAGE | 98.82-00.14 | 2 | | |
| | 0 01 30 50 | SPANNSTIFT 4x28 | ROLL PIN | GOUPILLE SERRAGE | | 4 | | |
| 56 | 0 01 51 80 | SCHMIERNIPPEL BM8x1 | LUBR. NIPPLE | GRAISSEUR | | 2 | | |
| 57 | 0 65 84 60 | STÜTZRAD | SUPPORT WHEEL | ROUE SUPPORT | 99.70-17-01 | 4 | | |
| | | Ein Stützrad besteht aus: | Components of 1 support | 1 Roue support se compose | | | | |
| | | | wheel: | des pieces suivantes: | | | | |
| | 0 65 84 90 | FELGE 5,50 Ax8 | RIM | JANTE | | 1 | | |
| | 0 44 48 90 | REIFEN 16x6.50-8 4PR | TYRE | PNEUMATIQUE | | 1 | | |
| | 0 41 24 60 | SCHLAUCH 16x6,50-8 | INNER TUBE | CHAMBRE AQ AIR | | 1 | | |
| 58 | 0 45 04 60 | RIKGL 6205 2 RS | GRV BALL BEAR | ROUL.RAIN BILL | | 2 | | |
| | 0 69 97 70 | DISTANZROHR | DISTANCE TUBE | TUBE DISTANCE | | 2 | | |
| | 0 65 91 80 | DICHTUNG | SEALING | JOINT | | 4 | | |
| | 0 65 91 70 | SCHUTZKAPPE | PROTECTION CAP | CALOTTE PROTECTION | | 4 | | |

| Grundgerät / Basic implement / Outil de Base | | | | | | | | P 1400 |
|--|-------------|-------------------------------|-------------------------------|-------------------------------|---------------|-------|----------------|-----------|
| Pos. | Bestell-Nr. | Benennung | Description | Désignation | SIZE/MASS | Stück | Farbe: | Kommentar |
| 59 | 0 47 02 40 | 6KTSCH M12x25 VP | HEX BOLT | VIS HEXAG | | 4 | | |
| 60 | 0 61 82 40 | ABSCHLUßKAPPE | WHEEL CAP | CHAPEAU | 98.33-02-00.5 | 4 | | |
| 61 | 0 01 40 70 | SCHEIBE A13 | WASHER | RONDELLE | | 4 | | |
| 62 | 0 44 12 50 | SPANNSTIFT 8x40 | ROLL PIN | GOUPILLE SERRAGE | | 4 | | |
| 64 | 1 60 36 60 | ZINKENTRÄGER LI KPL | TINE CARRIERS | BRAS PORTE-DENT | 98.85-32 | 12 | grün | |
| | 1 60 36 61 | ZINKENTRÄGER LI KPL | TINE CARRIERS | BRAS PORTE-DENT | 98.85-32 RJ | 12 | rot | |
| | 0 67 37 42 | DOPPELZINKEN ANTRAZIT | DOUBLE TINES | DENTS DOUBLE | 98.91-10.5B | 1 | bis Bauj. 2005 | |
| | 0 67 37 44 | DOPPELZINKEN ANTRAZIT | DOUBLE TINES | DENTS DOUBLE | 98.91-10.5D | 1 | ab Bauj. 2006 | |
| | 0 67 37 41 | DOPPELZINKEN SILBER | DOUBLE TINES | DENTS DOUBLE | 98.91-10.5A | 1 | bis Bauj. 2005 | |
| | 0 67 37 43 | DOPPELZINKEN SILBER | DOUBLE TINES | DENTS DOUBLE | 98.91-10.5C | 1 | ab Bauj. 2006 | |
| 64a | 1 60 36 70 | ZINKENTRÄGER RE KPL | TINE CARRIERS | BRAS PORTE-DENT | 98.85-33 | 12 | grün | |
| | 1 60 36 71 | ZINKENTRÄGER RE KPL | TINE CARRIERS | BRAS PORTE-DENT | 98.85-33 RJ | 12 | rot | |
| | | Ein Zinkenträger besteht aus: | Components of 1 tine carrier: | 1 Bras porte-dents se | | | | |
| | | | | compose des pieces suivantes: | | | | |
| 63 | 0 62 43 30 | ZINKENTRÄGER | TINE TUBE | TUBE DENTS | 98.75-04.1 | 1 | grün | |
| | 0 62 43 31 | ZINKENTRÄGER | TINE TUBE | TUBE DENTS | 98.75-04.1 RJ | 1 | rot | |
| 65 | 0 67 37 00 | ZINKENHALTER | TINE SUPPORT | SUPPORT DENTS | 98.91-10.1Z | 1 | | |
| | 0 67 37 20 | ZINKENKLEMMSTÜCK | TINE CLAMPING PIECE | PIECE DE SERRAGE DENTS | 98.91-10.2Z | 1 | bis Bauj. 2005 | |
| 65a | 0 67 37 21 | ZINKENKLEMMSTÜCK | TINE CLAMPING PIECE | PIECE DE SERRAGE DENTS | 98.91-10.2A | 1 | ab Bauj. 2006 | |
| 66 | 0 01 00 60 | 6KTSCH M12x60 | HEX BOLT | VIS HEXAG | | 1 | | |
| 67 | 0 20 06 10 | SGMU NM12 | SLF LOCK NUT | ECROU AUTOFR | | 1 | | |
| 68 | 0 20 22 70 | 6KTSCH M12x40 | HEX BOLT | VIS HEXAG | | | | |
| 69 | 0 20 06 10 | SGMU NM12 | SLF LOCK NUT | ECROU AUTOFR | | 48 | | |
| | 0 01 40 70 | SCHEIBE A13 | WASHER | RONDELLE | | 12 | | |
| 70 | 1 60 90 40 | ZINKENSICHERUNG | TINE LOSS PREVENTI. DEV. | SECURITES SUR DENTS | | 24 | | |
| 71 | 1 60 25 40 | ABDECKUNG OB | CONVERING ABOVE | COUVERCLE EN HAUT | 98.85-00.19 | 2 | | |
| 72 | 0 62 82 80 | ABDECKUNG UT | COVERING BELOW | COUVERCLE EN BAS | 98.85-00.2 | 2 | | |
| | 1 60 25 30 | ABDECKUNG UT | COVERING BELOW | COUVERCLE EN BAS | 98.85-00.18 | 2 | | |
| 73 | 1 41 95 80 | 6KTSCH M5x75 | HEX BOLT | VIS HEXAG | | 4 | | |
| 73a | 1 41 95 90 | 6KTSCH M5x95 | HEX BOLT | VIS HEXAG | | 4 | | |
| 74 | 0 45 70 30 | SCHEIBE A5,3 | WASHER | RONDELLE | | 4 | | |
| 75 | 0 49 59 10 | SGMU NM5 | SLF LOCK NUT | ECROU AUTOFR | | 8 | | |
| | 1 60 88 50 | HYDRAULIKLEITUNG KPL | HYDRAULIC PIPE | TUYAU HYDRAULIQUE | 98.78-08 | 1 | | |
| 76 | 0 46 92 60 | KUPPLUNGSSTECKER | COUPLER PLUG | PRISE HYD. MALE | | 1 | | |
| 77 | 1 41 67 00 | SCHLEIT 6x2200 | HOSE PIPE | FLEXIBLE | | 1 | | |
| 80 | 0 65 33 60 | SCHLEIT 6x530 | HOSE PIPE | FLEXIBLE | | 2 | | |
| 81 | 0 45 47 30 | EINSTELLBARE T-VERSCHR | ADJUSTABLE T-CONNECTI. | RACCORD EN T REGLABLE | | 1 | | |
| | 0 46 16 50 | GERADE SCHOTT VERSCHR | CONNECTION | RACCORD | | 1 | | |
| | 0 62 91 20 | BLENDE 0,7 | ORIFICE 0,7 | ORIFICE 0,7 | 98.82-00.10 | 2 | | |

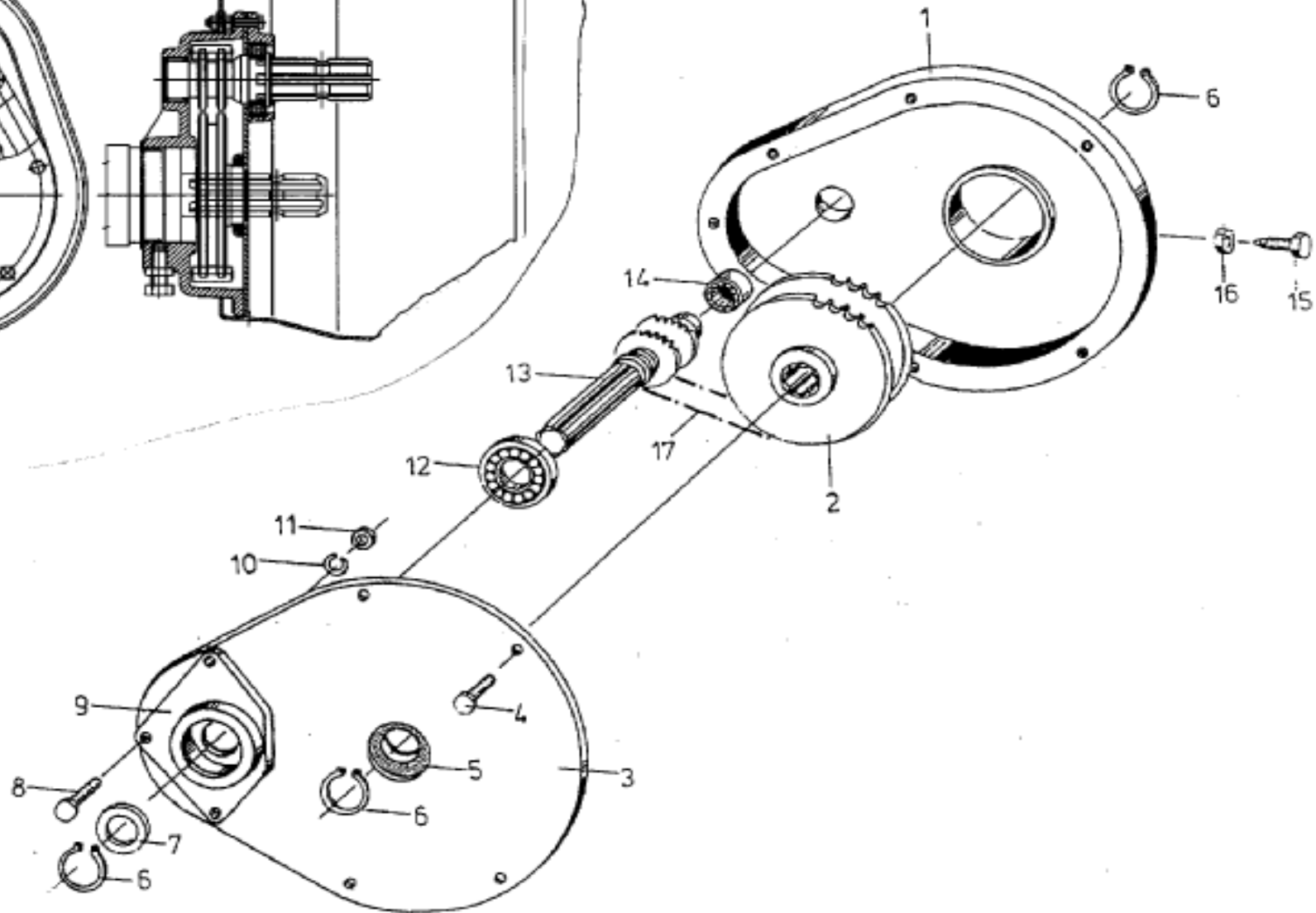
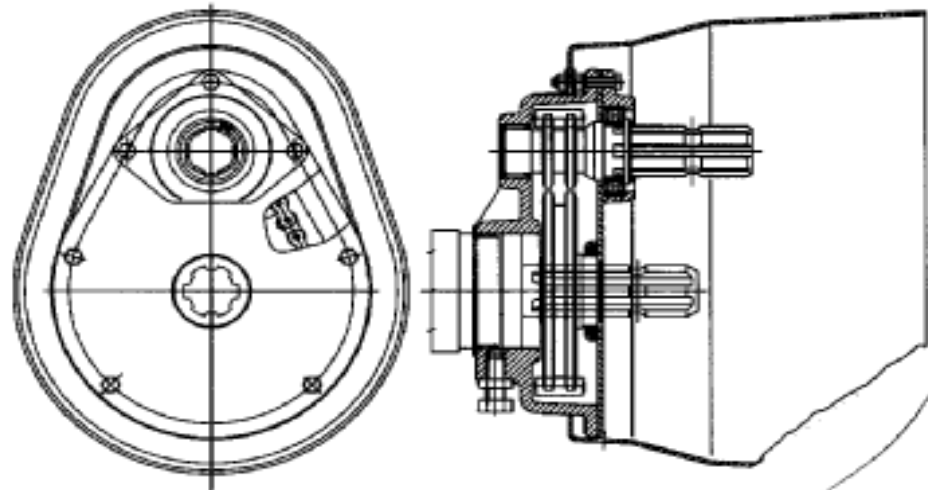
| Grundgerät / Basic implement / Outil de Base | | | | | | | P 1400 | |
|--|-------------|------------------|-------------|------------------|------------|-------|--------|-----------|
| Pos. | Bestell-Nr. | Benennung | Description | Désignation | SIZE/MASS | Stück | Farbe: | Kommentar |
| | 0 43 48 40 | SCHEIBE 15 | WASHER | RONDELLE | | 2 | | |
| 82 | 1 61 38 40 | SEIL L=2450 | ROPE | CORDE | 98.78-00.5 | 1 | | |
| | 0 62 89 00 | SEIL L=3000 | ROPE | CORDE | 98.83-00.6 | | | |
| 83 | 0 20 21 90 | 6KTSCH M8x30 | HEX BOLT | VIS HEXAG | | 2 | | |
| | 0 01 16 30 | 6KTMU M8 | HEX NUT | ECROU HEXAG | | 2 | | |
| 84 | 0 19 51 40 | GRIFF | GRIP | POIGNEE | 65.46-05.2 | 1 | | |
| 85 | 0 48 88 00 | SPANNSTIFT 13x40 | ROLL PIN | GOUPILLE SERRAGE | | 2 | | |
| 86 | 0 44 12 50 | SPANNSTIFT 8x40 | ROLL PIN | GOUPILLE SERRAGE | | 2 | | |
| 87 | 0 29 35 90 | SPANNSTIFT 5x40 | ROLL PIN | GOUPILLE SERRAGE | | 2 | | |
| | | | | | | | | |
| | | | | | | | | |
| | | | | | | | | |
| | | | | | | | | |
| | | | | | | | | |
| | | | | | | | | |
| | | | | | | | | |
| | | | | | | | | |
| | | | | | | | | |
| | | | | | | | | |
| | | | | | | | | |
| | | | | | | | | |
| | | | | | | | | |
| | | | | | | | | |
| | | | | | | | | |
| | | | | | | | | |
| | | | | | | | | |
| | | | | | | | | |
| | | | | | | | | |
| | | | | | | | | |
| | | | | | | | | |
| | | | | | | | | |
| | | | | | | | | |
| | | | | | | | | |
| | | | | | | | | |
| | | | | | | | | |
| | | | | | | | | |
| | | | | | | | | |
| | | | | | | | | |
| | | | | | | | | |
| | | | | | | | | |
| | | | | | | | | |
| | | | | | | | | |
| | | | | | | | | |
| | | | | | | | | |
| | | | | | | | | |
| | | | | | | | | |
| | | | | | | | | |
| | | | | | | | | |
| | | | | | | | | |
| | | | | | | | | |
| | | | | | | | | |
| | | | | | | | | |
| | | | | | | | | |
| | | | | | | | | |
| | | | | | | | | |
| | | | | | | | | |



| Grundgerät, Schutzbügel / Basic implement, Safety frame / Outil de Base, Protecteur | | | | | | | | | | P 1400 |
|---|-------------|-------------------------|--------------------|--------------------|-------------------|-------|--------|--|--|-----------|
| Pos. | Bestell-Nr. | Benennung | Description | Désignation | SIZE/MASS | Stück | Farbe: | | | Kommentar |
| 1 | 1 60 87 10 | AUSSENTRÄGER GSW | OUTER SUPPORT | SUUPPORT EXTERIEUR | 98.78-01 | 2 | grün | | | |
| | 1 60 87 11 | AUSSENTRÄGER GSW | OUTER SUPPORT | SUUPPORT EXTERIEUR | 98.78-01 RJ | 2 | rot | | | |
| 2 | 0 62 37 31 | GETRIEBEGEHÄUSE AU LI | GEAR BOX | BOITE DE VITESSES | 98.75-01-00.2A | 1 | grün | | | |
| | 0 62 37 33 | GETRIEBEGEHÄUSE AU LI | GEAR BOX | BOITE DE VITESSES | 98.75-01-00.2A RJ | 1 | rot | | | |
| 2.1 | 0 62 37 32 | GETRIEBEGEHÄUSE AU RE | GEAR BOX | BOITE DE VITESSES | 98.75-01-00.2B | 1 | grün | | | |
| | 0 62 37 34 | GETRIEBEGEHÄUSE AU RE | GEAR BOX | BOITE DE VITESSES | 98.75-01-00.2B RJ | 1 | rot | | | |
| 3 | 0 40 65 90 | SCHMIERNIPPEL H1SFG8x1 | LUBR NIPPLE | GRAISSEUR | | 2 | | | | |
| 4 | 1 60 87 60 | WELLE AU | SHAFT | ARBRE | 98.78-00.2 | 2 | | | | |
| 5 | 0 62 38 20 | KEGELRAD AU | BEVEL GEAR | PIGNON CONIQUE | 98.75-01-00.11 | 2 | | | | |
| 6 | 0 60 73 50 | SPANNSTIFT 10x43,5 | ROLL PIN | GOUPILLE SERRAGE | 98.32-01-01-00.1 | 2 | | | | |
| | 0 60 73 60 | SPANNSTIFT 6x43,5 | ROLL PIN | GOUPILLE SERRAGE | 98.32-01-01-00.2 | 2 | | | | |
| | 0 60 73 70 | SPANNSTIFT 3,5x43,5 | ROLL PIN | GOUPILLE SERRAGE | 98.32-01-01-00.3 | 2 | | | | |
| 7 | 0 46 69 40 | RIKGL 6009 2RS | GRV BALL BEAR | ROUL RAIN BILL | | 2 | | | | |
| | 0 41 52 00 | PAßSCHEIBE 60x75x0,2 | SHIM | CALE | | 2 | | | | |
| | 0 41 99 00 | PAßSCHEIBE 60x75x0,3 | SHIM | CALE | | 2 | | | | |
| | 0 45 10 00 | PAßSCHEIBE 60x75x0,5 | SHIM | CALE | | 2 | | | | |
| 8 | 0 41 42 80 | SICHERUNGSRING 45x1,75 | CIRCLIP | CIRCLIP | | 2 | | | | |
| 9 | 1 60 16 10 | LASCHE RE/HI | STRAP JOINT | COUVRE JOINT | 98.85-01-20 | 2 | grün | | | |
| | 1 60 16 11 | LASCHE RE/HI | STRAP JOINT | COUVRE JOINT | 98.85-01-20 RJ | 2 | rot | | | |
| 9.1 | 1 60 16 00 | LASCHE LI/HI | STRAP JOINT | COUVRE JOINT | 98.85-01-19 | 2 | grün | | | |
| | 1 60 16 01 | LASCHE LI/HI | STRAP JOINT | COUVRE JOINT | 98.85-01-19 RJ | 2 | rot | | | |
| | 0 40 65 90 | SCHMIERNIPPEL H1 SFG8x1 | LUBR NIPPLE | GRAISSEUR | | 4 | | | | |
| 10 | 0 62 75 90 | ZYLINDERSCHRAUBE | CHEESE HEAD | VIS DE CYLINDRE | 98.83-01-00.5 | 4 | | | | |
| | 1 60 80 60 | DISTANZRING | DISTANCE RING | ANNEAU DE DISTANCE | 98.85-01-00.22 | 4 | | | | |
| 11 | 0 47 08 00 | KROMU M20 | CASTEL NUT | ECROU DE COURONNE | | 4 | | | | |
| 12 | 1 40 36 40 | 6KTSCH M12x25 | HEX BOLT | VIS HEXAG | | 4 | | | | |
| 13 | 0 46 35 60 | 6KTSCH M12x40 VP | HEX BOLT | VIS HEXAG | | 16 | | | | |
| 14 | 0 43 80 00 | 6KTSCH M12x30 VP | HEX BOLT | VIS HEXAG | | 4 | | | | |
| 15 | 1 60 87 70 | SCHUTZBÜGEL | SAFETY FRAME | PROTECTEUR | 98.78-00.3 | 2 | Grau | | | |
| 16 | 0 62 36 50 | SCHUTZBÜGELSTREBE | SAFETY FRAME STRUT | ETAI PROTECTEUR | 98.75-00.4 | 2 | grün | | | |
| | 0 62 36 51 | SCHUTZBÜGELSTREBE | SAFETY FRAME STRUT | ETAI PROTECTEUR | 98.75-00.4 RJ | 2 | rot | | | |
| 17 | 0 62 36 60 | SCHUTZBÜGELKLEMME | SAFETY FRAME CLAMP | PINCE PROTECTEUR | 98.75-00.5 | 2 | | | | |
| 18 | 0 62 36 90 | KLEMMBÜGEL | CLAMPING BRACKET | SUPPORT DE SERRAGE | 98.75-00.8 | 2 | | | | |
| 19 | 0 06 05 70 | 6KTSCH M8x60 | HEX BOLT | VIS HEXAG | | 4 | | | | |
| 20 | 0 00 86 20 | FLRDSCH M8x50 | FLAT ROUND BOLT | VIS PLAT ROND | | 12 | | | | |
| 21 | 0 20 06 00 | SGMU NM8 | SLF LOCK NUT | ECROU AUTOFR | | 12 | | | | |
| | 0 20 13 90 | SCHEIBE | WASHER | RONDELLE | | 12 | | | | |
| 22 | 0 62 39 20 | STOPFEN | PLUG | BOUCHON | 98.75-01-00.22 | 10 | | | | |
| 23 | 1 60 10 70 | HALTER | SUPPORT | SUPPORT | 98.84-01-00.6 | 2 | grün | | | |
| | 1 60 10 71 | HALTER | SUPPORT | SUPPORT | 98.84-01-00.6 RJ | 2 | rot | | | |
| 24 | 0 62 43 90 | SCHRAUBENBUEGEL | SCREW BRACKET | ETRIER DE VIS | 98.76-00.2 | 2 | | | | |



| Schutzbügel, Warntafel / Safety frame, Warning panels / Protecteur, Pann. de. signilis. / Beskyttelsesbøjle, Advarselstavler | | | | | | | | | P 1400 |
|--|-------------|-----------------------|--------------------|-----------------------|--------------|-------|--------|-------------|--------|
| Pos. | Bestell-Nr. | Benennung | Description | Désignation | SIZE/MASS | Stück | Farbe: | Kommentar | |
| 53 | 0 67 07 50 | ROHR | TUBE | TUBE | 98.90-00.120 | 2 | Grau | bis:12/2008 | |
| 53 | 2560-001x | ABWEISBUEGEL VO.LI. | | | | 1 | Grau | ab:01/2009 | |
| 54 | 2560-002x | ABWEISBUEGEL VO.RE. | | | | 1 | Grau | ab:01/2009 | |
| 55 | 0 40 69 20 | 6KTSCH M10x60 | SCREW | VIS | | 4 | | | |
| 56 | 0 01 19 40 | SGMU NM10 | SLF. LOCK NUT | ECROU AUTOFR. | | 4 | | | |
| 80 | 1 60 14 00 | HALTER LI.GSW | SUPPORT | SUPPORT | 98.84-04 | 1 | grün | | |
| | 1 60 14 01 | HALTER LI.GSW | SUPPORT | SUPPORT | 98.84-04 RJ | 1 | rot | | |
| 81 | 1 60 14 10 | HALTER RE.GSW | SUPPORT | SUPPORT | 98.84-05 | 1 | grün | | |
| | 1 60 14 11 | HALTER RE.GSW | SUPPORT | SUPPORT | 98.84-05 RJ | 1 | rot | | |
| 82 | 0 01 11 80 | 6KTSCH M12x30 | SCREW | VIS | | 6 | | | |
| 83 | 0 01 19 80 | SCHEIBE R 13 | WASHER | RONDELLE | | 6 | | | |
| 84 | 0 20 06 10 | SGMU NM12 | SLF LOCK. NUT | ECROU AUTOFR. | | 6 | | | |
| 86 | 1 60 88 00 | VERBINDUNGSROHR | JUNCTION TUBE | TUBE DE JONCTION | 98.78-00.4 | 1 | Grau | | |
| 87 | 0 66 15 70 | LASCHE | STRAP-JOINT | COUVRE JOINT | 98.89-00.41 | 2 | | | |
| 88 | 0 66 32 00 | HALTEROHR | HOLDING TUBE | TUYAU D'ARRÊT | 98.89-00.46 | 2 | Grau | bis:12/2008 | |
| | 2560-003x | ABWEISBUEGEL HI.RE/LI | | | | 2 | Grau | ab:01/2009 | |
| 89 | 0 40 69 20 | 6KTSCH M10x60 | SCREW | VIS | | 8 | | | |
| 90 | 0 01 19 40 | SGMU NM10 | SLF. LOCK NUT | ECROU AUTOFR. | | 8 | | | |
| 95 | 2520-183x | WARNTAFEL EDELSTAHL | WARNING PANELS | PANNEAUX DE SIGNALIS. | 98.89-00.40 | 4 | | | |
| 96 | 0 63 55 70 | WARNFOLIE | WARNING FOLIO | FEUILLE SIGNALISATION | | 4 | | | |
| 97 | 0 66 13 80 | ZWISCHENPLATTE | INTERMEDIATE PLATE | PLANCHE INTERMEDIAIRE | 98.89-00.44 | 8 | | | |
| 98 | 1 40 35 60 | ROHRSCHELLE D1=36 | PIPE CLAMP | ATTACHE DE TUYAU | | 4 | | | |
| 99 | 0 20 28 10 | FLRDSCH M8x25 | FLAT ROUND BOLT | VIS PLAT ROND | | 8 | | | |
| 100 | 0 20 06 00 | SGMU NM8 | SLF LOCK. NUT | ECROU AUTOFR. | | 16 | | | |
| 102 | 0 20 55 30 | RÜCKSTRAHLER | REAR REFLECTOR | REFLECTEUR | | 2 | | | |
| 103 | 0 40 59 10 | SCHEIBE R5,5 | WASHER | RONDELLE | | 2 | | | |
| | | | | | | | | | |
| | | | | | | | | | |
| | | | | | | | | | |
| | | | | | | | | | |
| | | | | | | | | | |
| | | | | | | | | | |
| | | | | | | | | | |
| | | | | | | | | | |
| | | | | | | | | | |
| | | | | | | | | | |
| | | | | | | | | | |
| | | | | | | | | | |
| | | | | | | | | | |
| | | | | | | | | | |
| | | | | | | | | | |
| | | | | | | | | | |
| | | | | | | | | | |
| | | | | | | | | | |
| | | | | | | | | | |
| | | | | | | | | | |
| | | | | | | | | | |
| | | | | | | | | | |
| | | | | | | | | | |



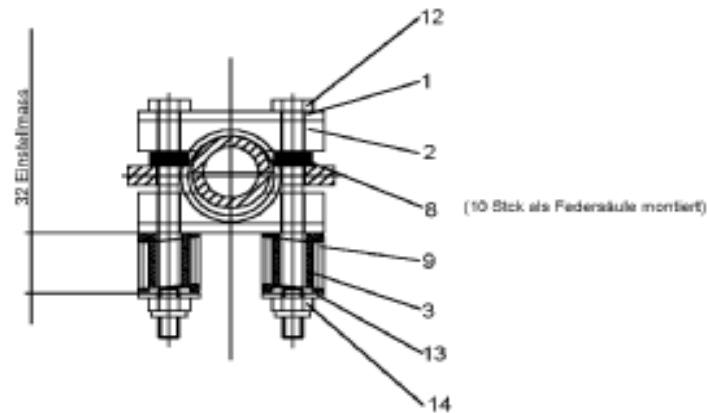
Schwadgetriebe / Swath gear transmission / Engrenage de transmission andain Reduktionsgear

ähnlich P 1391

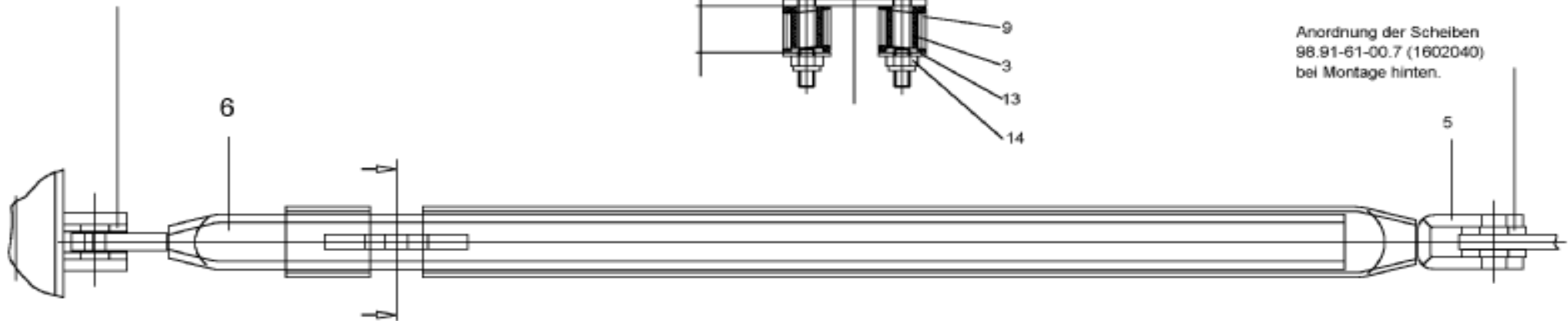
P 1431

| Pos. | Bestell-Nr. | Benennung | Description | Désignation | SIZE/MASS | Stück | Farbe: | | | |
|------|-------------|-------------------------|-----------------------|-------------------------|---------------|-------|--------|--|--|--|
| | 0 61 24 20 | SCHWADGETRIEBE | SWATH GEAR TRANSMIS. | ENGRENAGE D. TRAN. AND. | 98.60-20 | 1 | | | | |
| 01 | 0 61 24 40 | GETRIEBEGEHÄUSE | GEAR BOX | BOITE DE VITESSE | 98.60-20-00.1 | 1 | | | | |
| 02 | 0 61 24 30 | KETTENRAD GSW | SPROCKEL WHEEL WELDED | ROUE A CHAINE | 98.60-20-01 | 1 | | | | |
| 03 | 0 61 24 60 | DECKEL GSW | CAP | CHAPEAU | 98.60-20-02 | 1 | | | | |
| 04 | 0 20 65 00 | 6KTSCH M6x29 | HEX BOLT | VIS HEXAG. | | 4 | | | | |
| 05 | 0 43 98 80 | FILZRG 64x48x6,5 | FELT RING | RONDELLE EN FEUTRE | | 1 | | | | |
| 06 | 0 00 67 10 | SRG 35x1,5 | CIRCLIP | CIRCLIP | | 3 | | | | |
| 07 | 0 43 98 90 | STÜTZSCHEIBE S35x45x2,5 | SUPPORTING RING | RONDELLE BAGUE DE FRAN. | | 1 | | | | |
| 08 | 0 09 50 70 | 6KTSCH M6x30 | HEX BOLT | VIS HEXAG. | | 3 | | | | |
| 09 | 0 61 24 50 | LAGERDECKEL | BEARING CAP | CHAPEAU DE PALIER | 98.60-20-00.2 | 1 | | | | |
| 10 | 0 00 62 90 | FEDERRG A6 | SPRING WASHER | RONDELLE ELAST. | | 7 | | | | |
| 11 | 0 02 55 80 | 6KTMU M6 | HEX NUT | ECROU HEXAG. | | 7 | | | | |
| 12 | 0 43 18 90 | RIKGL 6007 2 RS | GRV BALL BAER | ROUL.RAIN.BILL. | | 1 | | | | |
| 13 | 0 61 24 70 | ANTRIEBSWELLE | DRIVING SHAFT | ARBRE DE COMMANDE | 98.60-20-00.4 | 1 | | | | |
| 14 | 0 43 98 70 | NADELBUCHSE 3020 | NEADLE BUSHING | MANCHON D'AIGUILLE | | 1 | | | | |
| 15 | 0 43 07 90 | 6KTSCH M12x35 | HEX BOLT | VIS HEXAG. | | 1 | | | | |
| 16 | 0 01 16 40 | 6KTMU M12 | HEX NUT | ECROU HEXAG. | | 1 | | | | |
| 17 | 0 43 98 60 | ROLLENKETTE 08 B-2x38 | RD STEEL CHAIN | CHAINE ACIER ROND | | 1 | | | | |
| | | | | | | | | | | |
| | | | | | | | | | | |
| | | | | | | | | | | |
| | | | | | | | | | | |
| | | | | | | | | | | |
| | | | | | | | | | | |
| | | | | | | | | | | |
| | | | | | | | | | | |
| | | | | | | | | | | |
| | | | | | | | | | | |
| | | | | | | | | | | |
| | | | | | | | | | | |
| | | | | | | | | | | |
| | | | | | | | | | | |
| | | | | | | | | | | |
| | | | | | | | | | | |
| | | | | | | | | | | |
| | | | | | | | | | | |
| | | | | | | | | | | |
| | | | | | | | | | | |

Anordnung der Scheiben
98.91-61-00.7 (1602040)
bei Montage vorn.

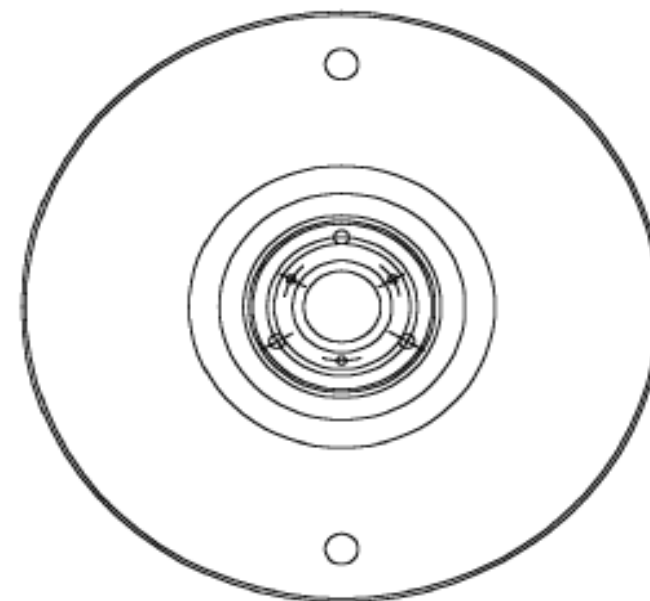
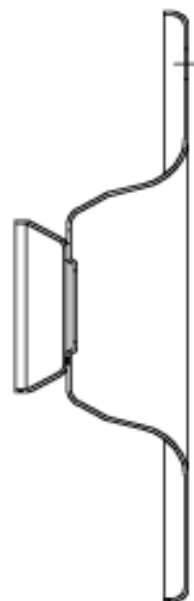


Anordnung der Scheiben
98.91-61-00.7 (1602040)
bei Montage hinten.



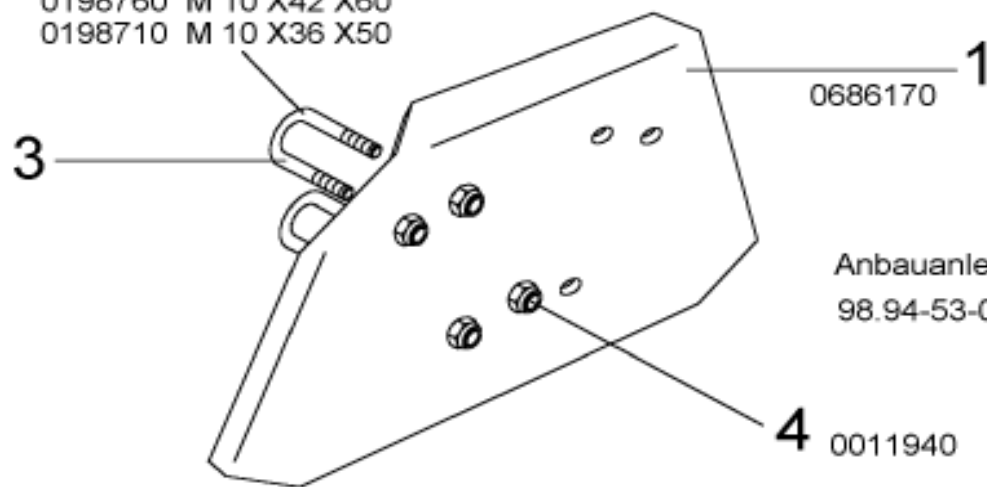
| Schwenkstoßdämpfer | | | | | | | | P 1431 | |
|--------------------|-------------|----------------|-----------------|---------------------|----------------|-------|--|-----------|--|
| Pos. | Bestell-Nr. | Benennung | Description | Désignation | SIZE/MASS | Stück | | Kommentar | |
| | 1600550 | STOSSDAEMPFER | SHICK ABSORBER | AMORTISSEUR | 98.91-61 | 1 | | | |
| 1 | 1602020 | LASCHE | STRAP-JOINT | COUVRE-JOINT | 98.91-61-00.1 | 2 | | | |
| 2 | 1602060 | SHELLE | CLIP | ETRIER | | 2 | | | |
| 3 | 1602050 | HUELSE | BUSHING | DOUILLE | 98.91-61-00.3 | 2 | | | |
| 5 | 1602070 | AUSSENROHR GSW | OUTER PIPE | TUYAU EXTERIEUR | 98.91-61-01 | 1 | | | |
| 6 | 1602080 | INNENROHR GSW | INNER PIPE | TUYAU INTERIEUR | 98.91-61-02 | 1 | | | |
| 8 | 1417580 | TELLERFED | DISC SPRING | RESSORT A DISQUE | 188x10,2x0,25 | 20 | | | |
| 9 | 1417960 | DRUCKFEDER | PRESSURE SPRING | RESSORT DE PRESSION | GUKU D 360 | 2 | | | |
| 12 | 0416880 | 6KTSCH | SCREW | VIS | M 10x120 D 931 | 2 | | | |
| 13 | 0014110 | SCHEIBE | WASHER | RONDELLE | A 10,5 D 9021 | 2 | | | |
| 14 | 0011940 | SGMU | FLAT ROUND BOLT | ECROU AUTOFR. | N M10 D 985 | 2 | | | |
| | | | | | | | | | |
| | | | | | | | | | |
| | | | | | | | | | |
| | | | | | | | | | |
| | | | | | | | | | |
| | | | | | | | | | |
| | | | | | | | | | |
| | | | | | | | | | |
| | | | | | | | | | |
| | | | | | | | | | |
| | | | | | | | | | |
| | | | | | | | | | |
| | | | | | | | | | |
| | | | | | | | | | |
| | | | | | | | | | |
| | | | | | | | | | |
| | | | | | | | | | |
| | | | | | | | | | |
| | | | | | | | | | |
| | | | | | | | | | |
| | | | | | | | | | |
| | | | | | | | | | |
| | | | | | | | | | |
| | | | | | | | | | |
| | | | | | | | | | |
| | | | | | | | | | |
| | | | | | | | | | |
| | | | | | | | | | |
| | | | | | | | | | |
| | | | | | | | | | |
| | | | | | | | | | |
| | | | | | | | | | |
| | | | | | | | | | |

Wickelschutzkappe 1 60 42 30



Anbauanleitung: A 1501

0198760 M 10 X42 X60
0198710 M 10 X36 X50

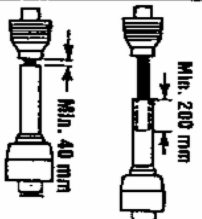


0686170 1

Anbauanleitung: A 1447
98.94-53-00.10

4 0011940

| Pos. | Bestell-Nr. | Benennung | Description | Désignation | SIZE/MASS | Stück | | | |
|------|-------------|-----------------------|--------------|--------------|-----------|-------|--|--|--|
| | 0629540 | AUFKLEBERSATZ SICHERH | DECALCOMANIA | DECALCOMANIE | 99.45-15 | 1,00 | | | |



D Beim Ausheben und Kurvenfahrt darf Gelenkwelle nicht stauchen! Wenn nötig, Kürzen!

F Le cardan ne doit pas refouler en cas de soulèvement ou virage. Raccourcir si nécessaire!

NL Tijdens het heffen en het draaien mag de tussenas niet stijgen! Korteren indien nodig!

GB When clearing from ditches or cornering, the universal joint shaft must not bind! Shorten if necessary!

99.45-15.1 0629550

STOLL

Aufklebersatz Sicherheit
99.45-15 0629540
für Zettlwehder, Schwader
Universallheumaschinen

Sprachen:

D deutsch
F français
NL flamsch
GB englich



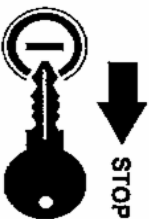
D Vor Inbetriebnahme die Betriebsanleitung und die Sicherheitsvorschriften lesen und beachten!

F Avant la mise en marche, lire et bien respecter le mode d'emploi et les instructions de sécurité!

NL Lees de gebruiksaanwijzing en de veiligheidsvoorschriften door, voordat de machine in gebruik wordt genomen en volg de aanwijzingen ervan op!

GB Prior to operating the machine read and observe the operator's manual and all safety instructions!

99.45-15.2 0629560



D

Instandsetzungs-, Wartungs- und Reinigungsarbeiten sowie die Beseitigung von Funktionsstörungen grundsätzlich nur bei abgeschaltetem Antrieb und stillstehendem Motor vornehmen! Zündschlüssel abziehen!

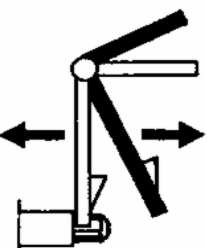
F Ne procéder aux travaux de maintenance, d'entretien et de nettoyage ainsi qu'à la suppression des pannes que prise de force débrayée, moteur arrêté et clé de contact enlevée!

NL Reparaties, onderhouds- en reinigingswerkzaamheden alsmede verhelpen van storingen pas uitvoeren, nadat de aandrijving is uitgeschakeld, de motor is afgezet en de contactk Sleutel is verwijderd!

GB Repair-, maintenance- and cleaning operations as well as remedy of function faults should principally be conducted with a stopped drive and engine. Remove ignition key!

99.45-15.3 0629570

WILHELM STOLL MASCHINEN/FABRIK GMBH · POSTFACH 38266 LENGDE/BROSTEDT



D Arbeitseinsatz
F Travail
NL In het werk
GB Operation

D Transportfahrt
F Route
NL Wegtransport
GB Transportation

99.45-15.4 0629580
99.45-15.4 gilt nicht für UM



D

Schutzhügel vor Arbeitsbeginn in Schutzstellung bringen.

F Avant mise en route amener les garantis en position/sécurité.

NL Beschermbeugels vóór het werk in werkstand plaatsen.

GB Before the start of operations bring outer guard into position.

99.45-15.5 0629590

Aufkleber 99.45-15.5 gilt nur für Schwader und UM

99.45-15.5 0629600

F

■ Alle Schmierpöpel vor Gebrauch und im Einsatz täglich abschmieren.
■ Alle beweglichen Teile ölen und täglich auf Funktion überprüfen.
■ Vor dem ersten Einsatz und nach Inbetriebnahme Schrauben und Mutterm nachziehen.

■ Graisser tous les raccords journallement (avant l'emploi et au travail)

■ Huiler toutes les pièces mobiles et en contrôler le fonctionnement à chaque emploi.

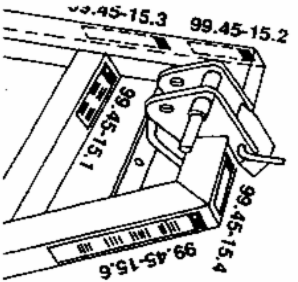
■ Avant la première mise en service reserrer les vis et les écrous.

NL

■ Eenmaal alle smeerpöpels smeren en tijdens het gebruik dagelijks.
■ Alle bewegende delen smeren met olie en dagelijks de goede werking ervan controleren.
■ Voor het eerste gebruik en na de Inbedrijfstelling bouten en moeren aantrekken.

■ Grease all grease nipples before using the machine and daily during use.
■ Oil all moving parts and check daily for proper function.
■ Before first using and again afterwards, tighten all nuts and bolts.

GB



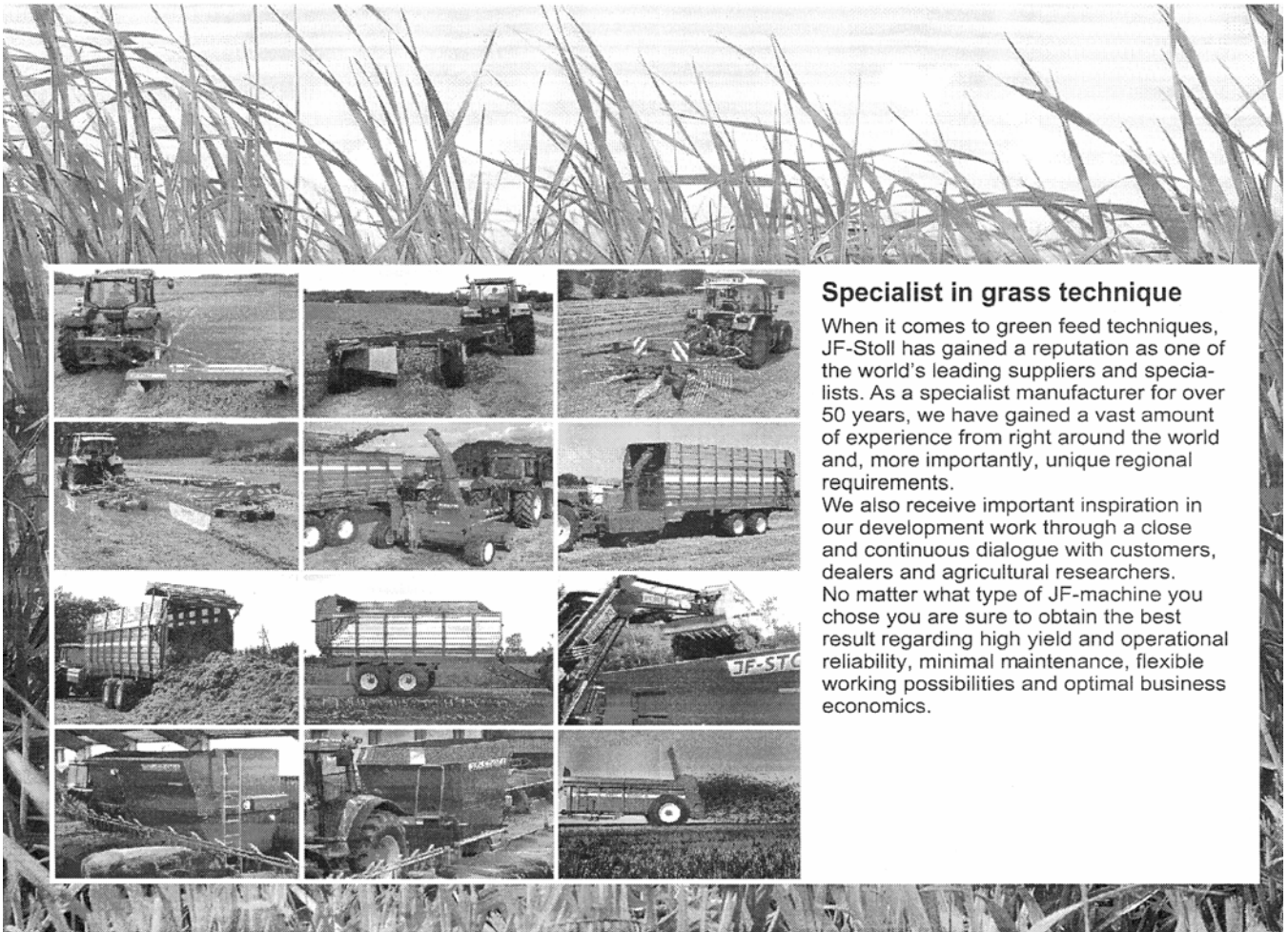
99.45-15.7 0629610



max. 0,9m



99.45-15.7 0629610



Specialist in grass technique

When it comes to green feed techniques, JF-Stoll has gained a reputation as one of the world's leading suppliers and specialists. As a specialist manufacturer for over 50 years, we have gained a vast amount of experience from right around the world and, more importantly, unique regional requirements.

We also receive important inspiration in our development work through a close and continuous dialogue with customers, dealers and agricultural researchers. No matter what type of JF-machine you chose you are sure to obtain the best result regarding high yield and operational reliability, minimal maintenance, flexible working possibilities and optimal business economics.

Ersatzteilbestellung
 Tel.: 0 53 44 / 20 1 43 bis 20 1 46
 Telefax: 0 53 44 / 20 183
 E-mail: EA@stoll-jf.de

Dealer

WILHELM STOLL
Maschinenfabrik GmbH
 Postfach 3 38266 Lengede
 Bahnhofstr. 21 38268 Lengede
 Telefon Allgemein 0 53 44 / 20 - 0
 Telefax Verkauf 0 53 44 / 20 182
 E-mail Allgemein box@stoll-jf.de
 E-mail Verkauf vkf@stoll-jf.de